

Carroll County Board of Education

COVID-19 Data Update April 14, 2021

**Maggie Kunz, MPH
Carroll County Health Planner**

*Please note that this data is preliminary and subject to change.

**Carroll County
Health Department**

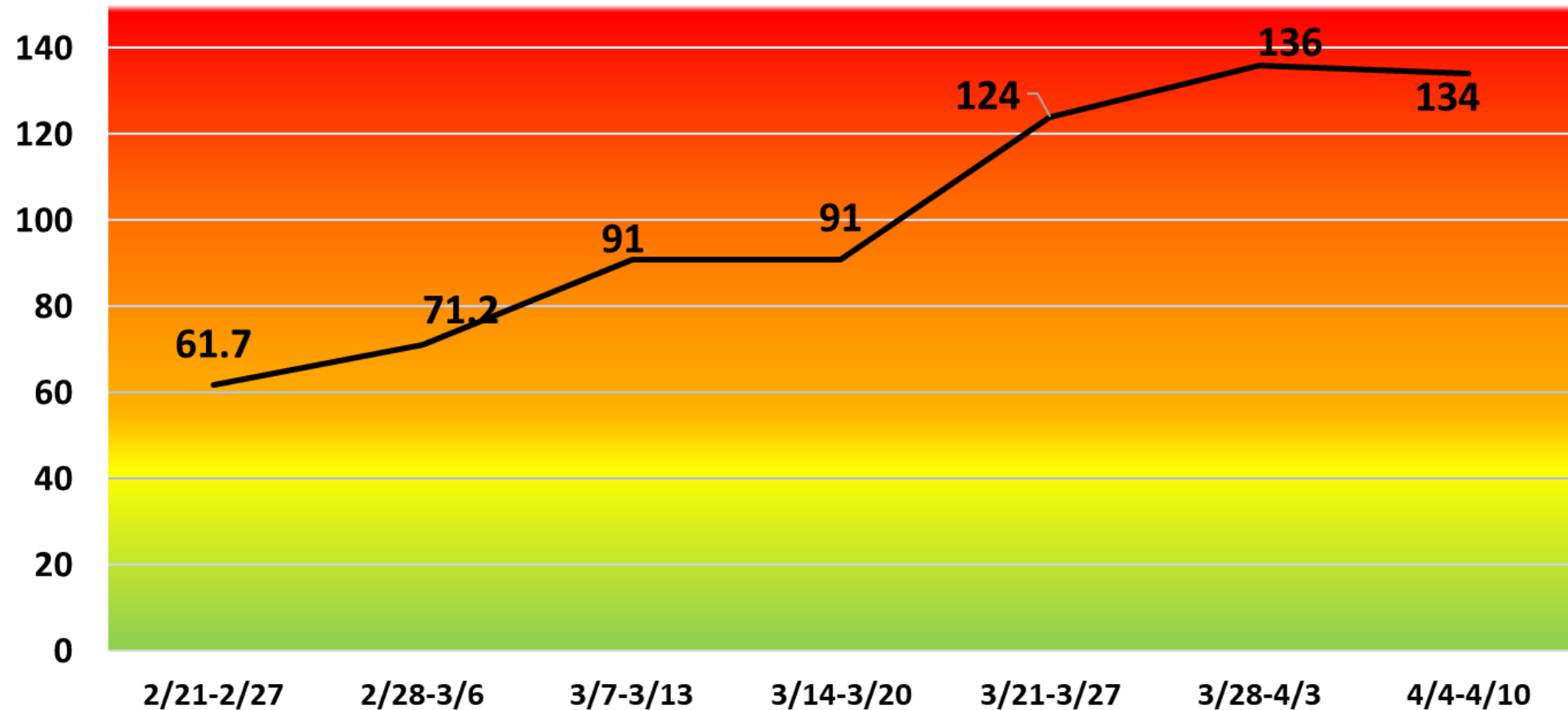


Public Health
Prevent. Promote. Protect.

Levels of community transmission as defined by the CDC:

- Total new cases per 100,000 in past 7 days: low 0-9, moderate 10-49, substantial 50-99, high ≥ 100
- Percent positive tests in past 7 days: low $<5\%$, moderate 5-7.9%, substantial 8-9.9%, high $\geq 10\%$

Total new cases per 100,000 per week



Total new cases per 100,000 this week: 134, high

Positivity rate in Carroll County:

2/21: 3.3%, low

2/28: 2.8%, low

3/7: 3.3%, low

3/14: 4.9%, low

3/23: 5.3%, moderate

3/30: 5.8%, moderate

4/5: 5.87%, moderate

4/13 5.25%, moderate

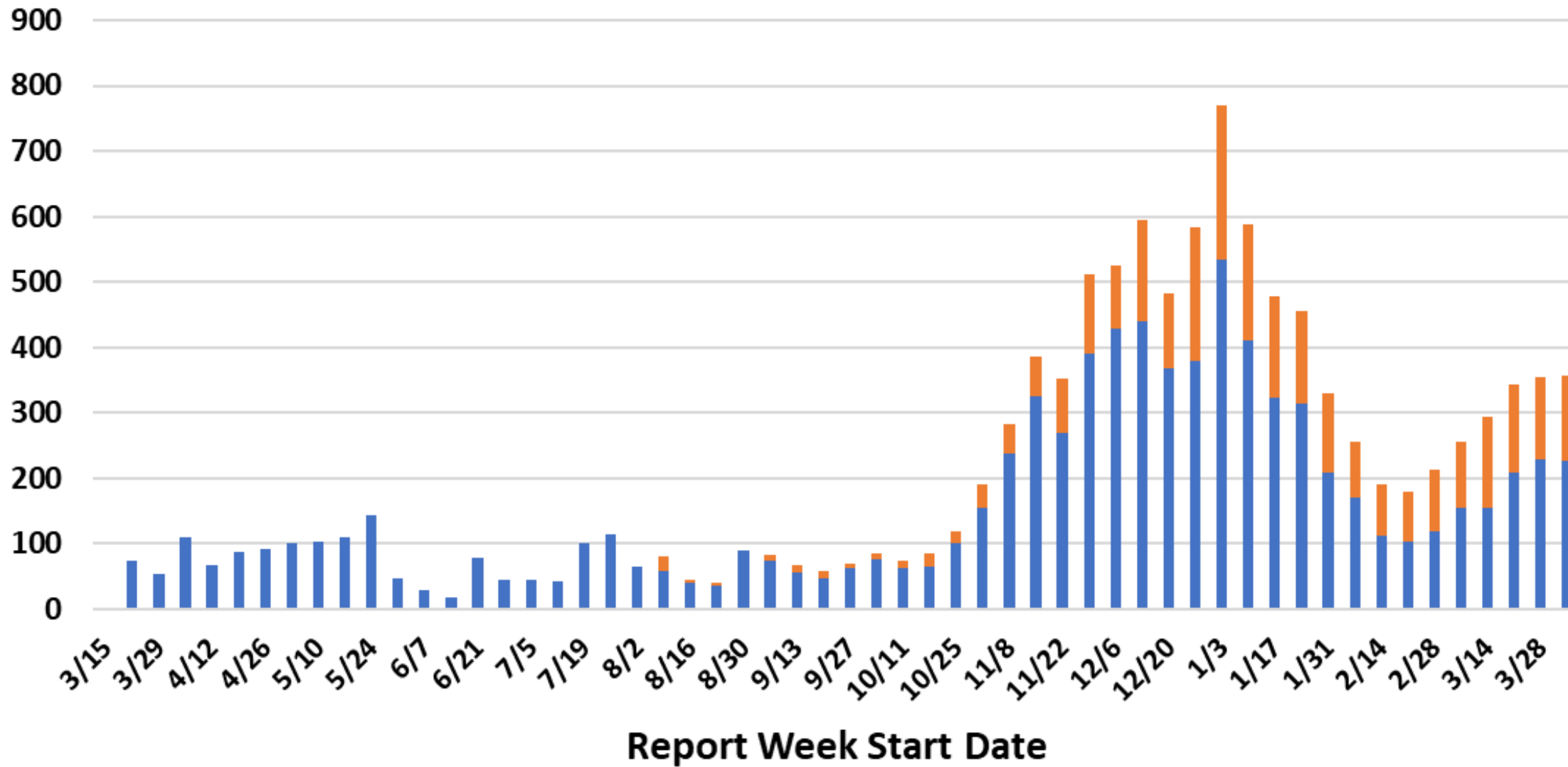
Table 2. Recommended Prevention Strategies for K-12 Schools and Levels of Community Transmission

Prevention Strategies by Level of Community Transmission				
Prevention Strategies: All Schools	Low Transmission ¹ Blue	Moderate Transmission Yellow	Substantial Transmission Orange	High Transmission Red
<p>All schools implement 5 key prevention strategies:</p> <ul style="list-style-type: none"> • Universal and correct use of masks required • Physical distancing • Handwashing and respiratory etiquette • Cleaning and maintaining healthy facilities • Contact tracing in combination with isolation and quarantine 	<p>Elementary Schools Physical distancing: at least 3 feet between students in classrooms</p>		<p>Elementary Schools Physical distancing: at least 3 feet of distance between students in classrooms</p> <p>Cohorting² recommended when possible</p>	
	<p>Middle and High Schools Physical distancing: at least 3 feet between students in classrooms</p>		<p>Middle and High Schools Physical distancing: at least 3 feet of distance between students in classrooms</p> <p>Cohorting recommended when possible</p>	<p>Middle and High Schools Schools that can use cohorting: at least 3 feet of distance</p> <p>Schools that cannot use cohorting: at least 6 feet distance between students in classrooms ²</p>
	<p>Sports and extracurricular activities Sports and extracurricular activities occur with at least 6 feet of physical distance to the greatest extent possible²</p>	<p>Sports and extracurricular activities Sports and extracurricular activities occur with at least 6 feet of physical distance required²</p>	<p>Sports and extracurricular activities Sports and extracurricular activities occur only if they can be held outdoors, with more than 6 feet of physical distancing²</p>	

<https://www.cdc.gov/coronavirus/2019-nCoV/community/schools-childcare/operation-strategy.html>

All COVID-19 Cases by Report Week

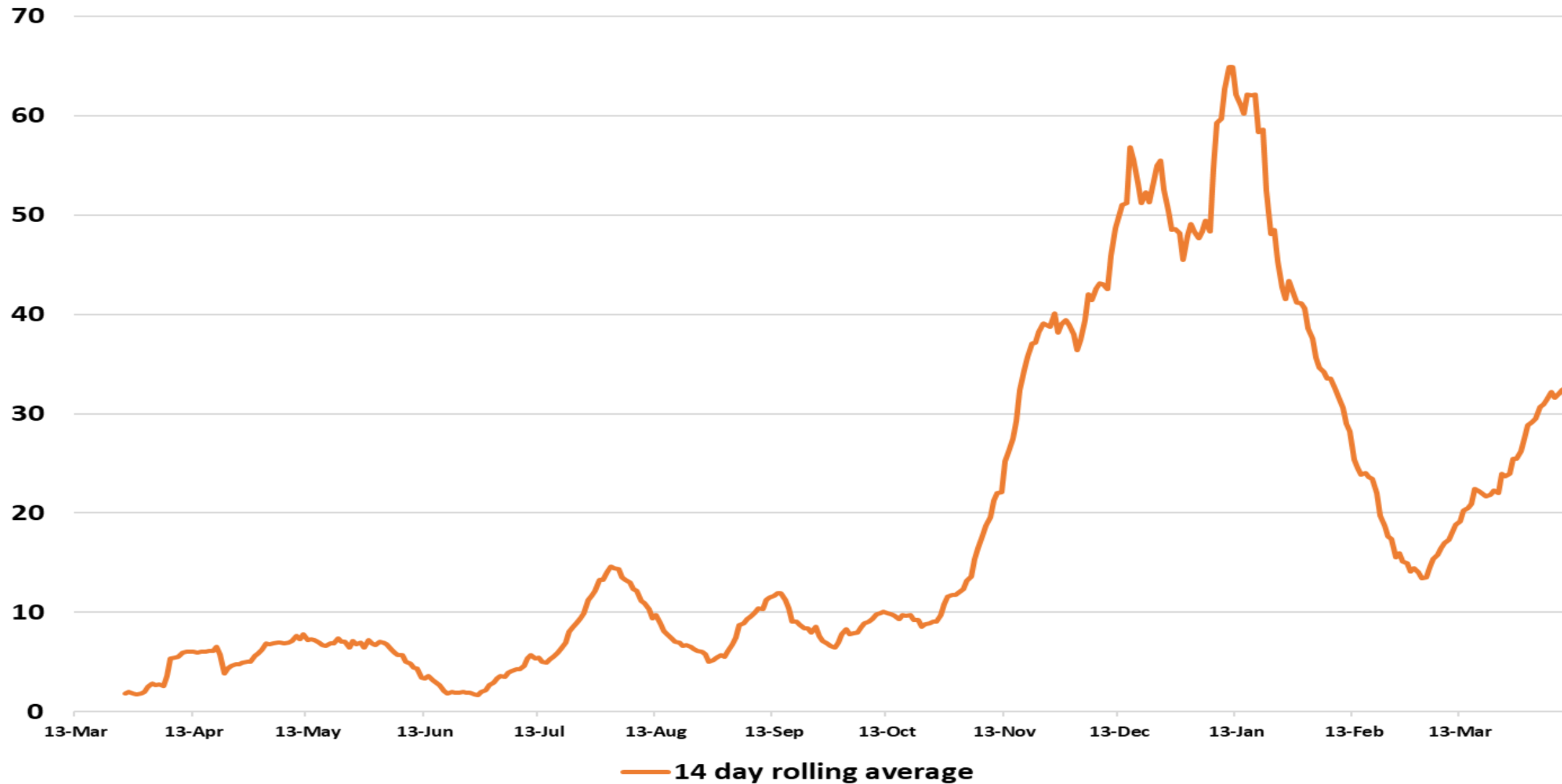
Confirmed Probable



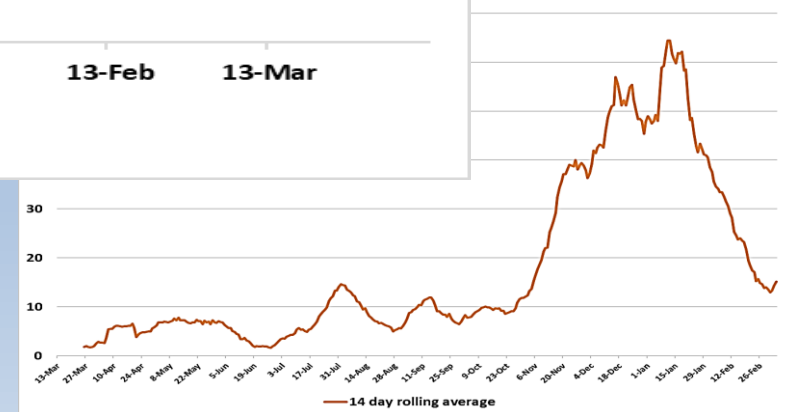
Probable cases

- Probable cases are those who test positive with an antigen test, not a PCR test.
- Probable cases are not included in our confirmed case totals (PCR test only).
- Cases that are confirmed with PCR tests are removed from the probable totals.

14-Day Rolling Average of New Community COVID-19 Cases by Report Date



COVID-19 Cases by Report Date

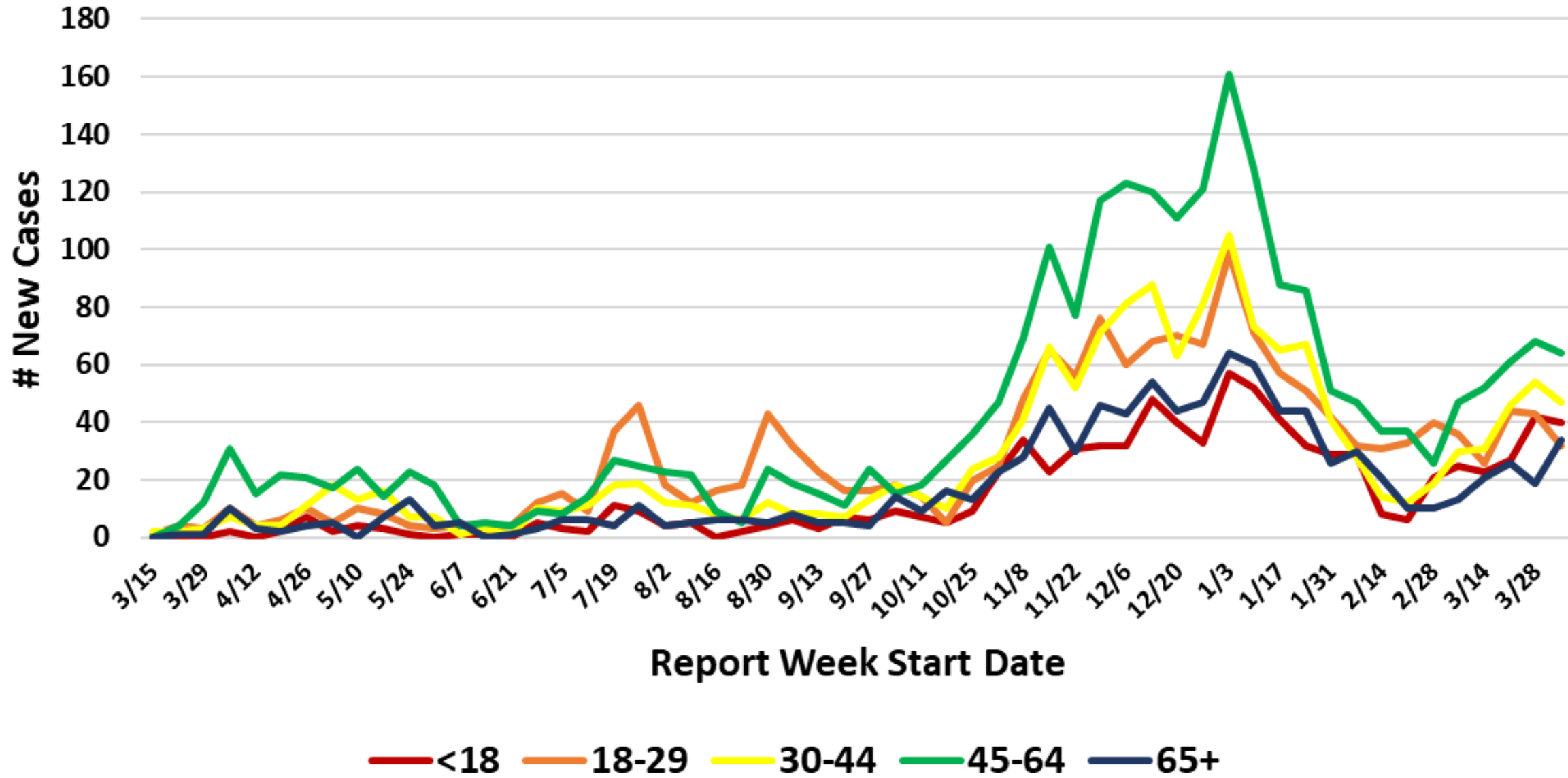


Please note: community cases only

Last month's presentation:

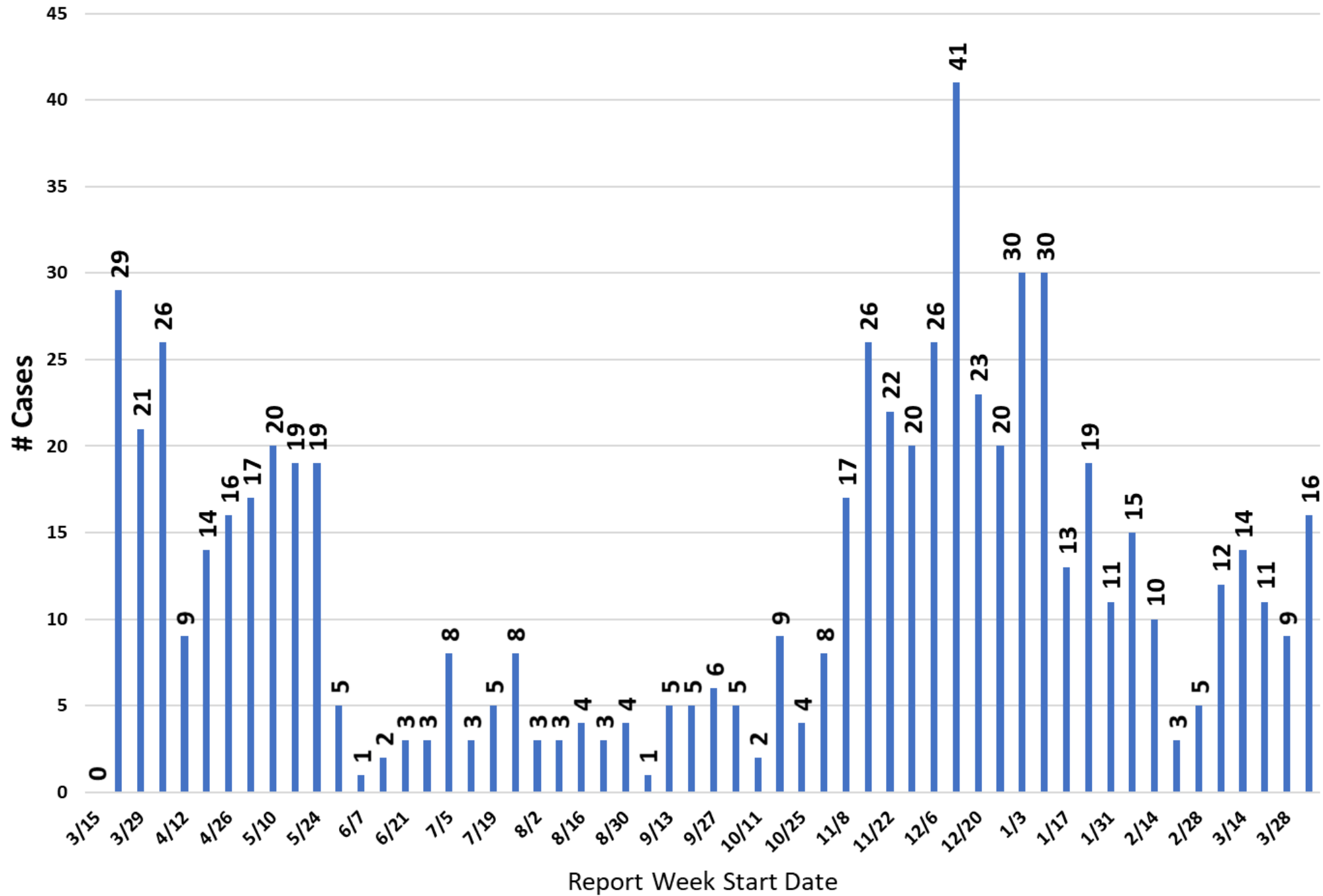


COVID Cases: Age Groups by Report Week



Community cases

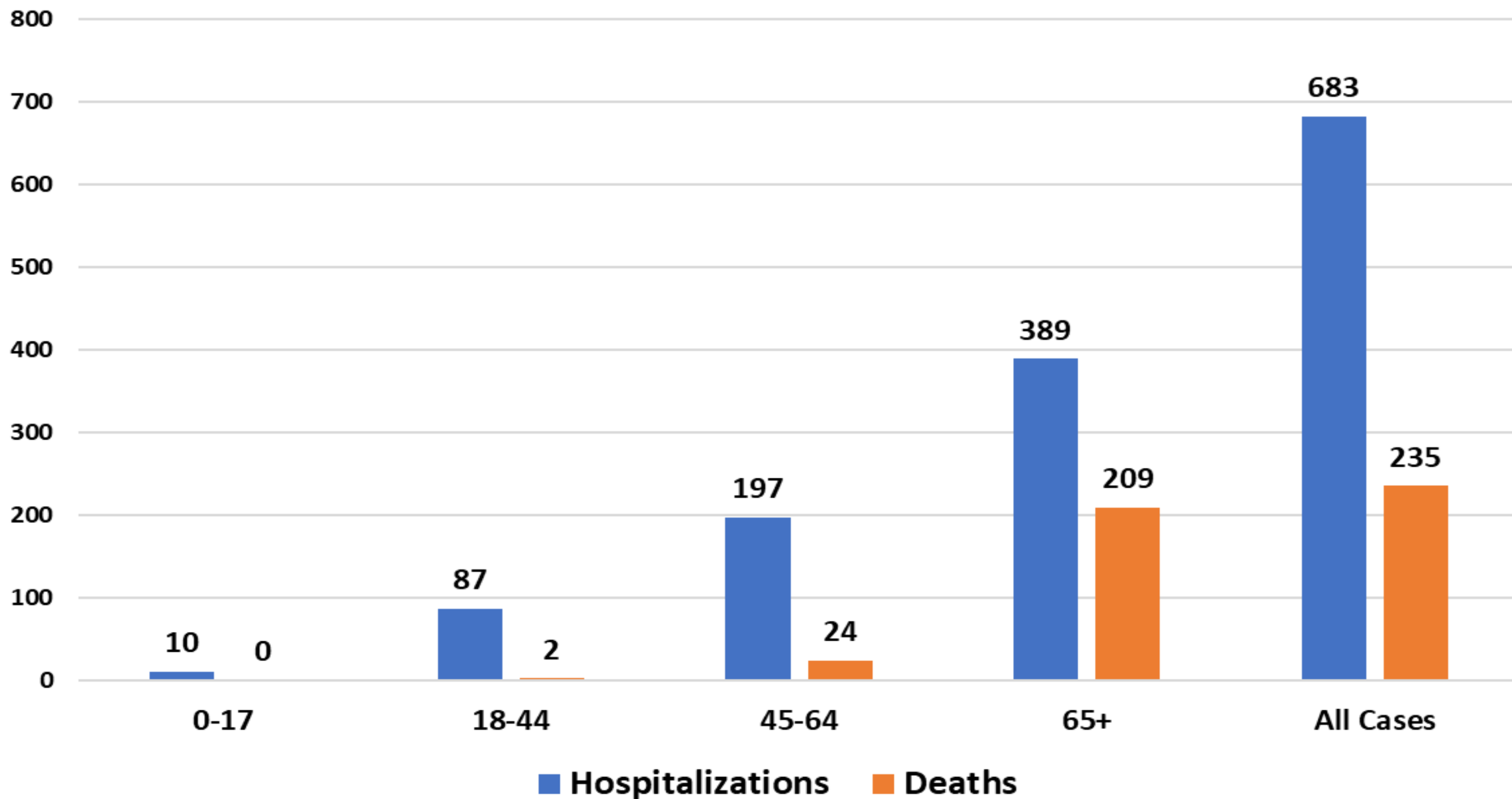
Hospitalizations by Report Week: All COVID-19 Cases



This graph shows hospitalizations by week for COVID positive Carroll County residents, in any hospital.

- Report week is the week their case was reported, which may not be the same week they were hospitalized. Only one hospitalization is noted per person.
- There is a slight data lag so recent numbers may increase.
- Additional hospital data can be found on our website: <https://cchd.maryland.gov/carroll-county-md-cases/>

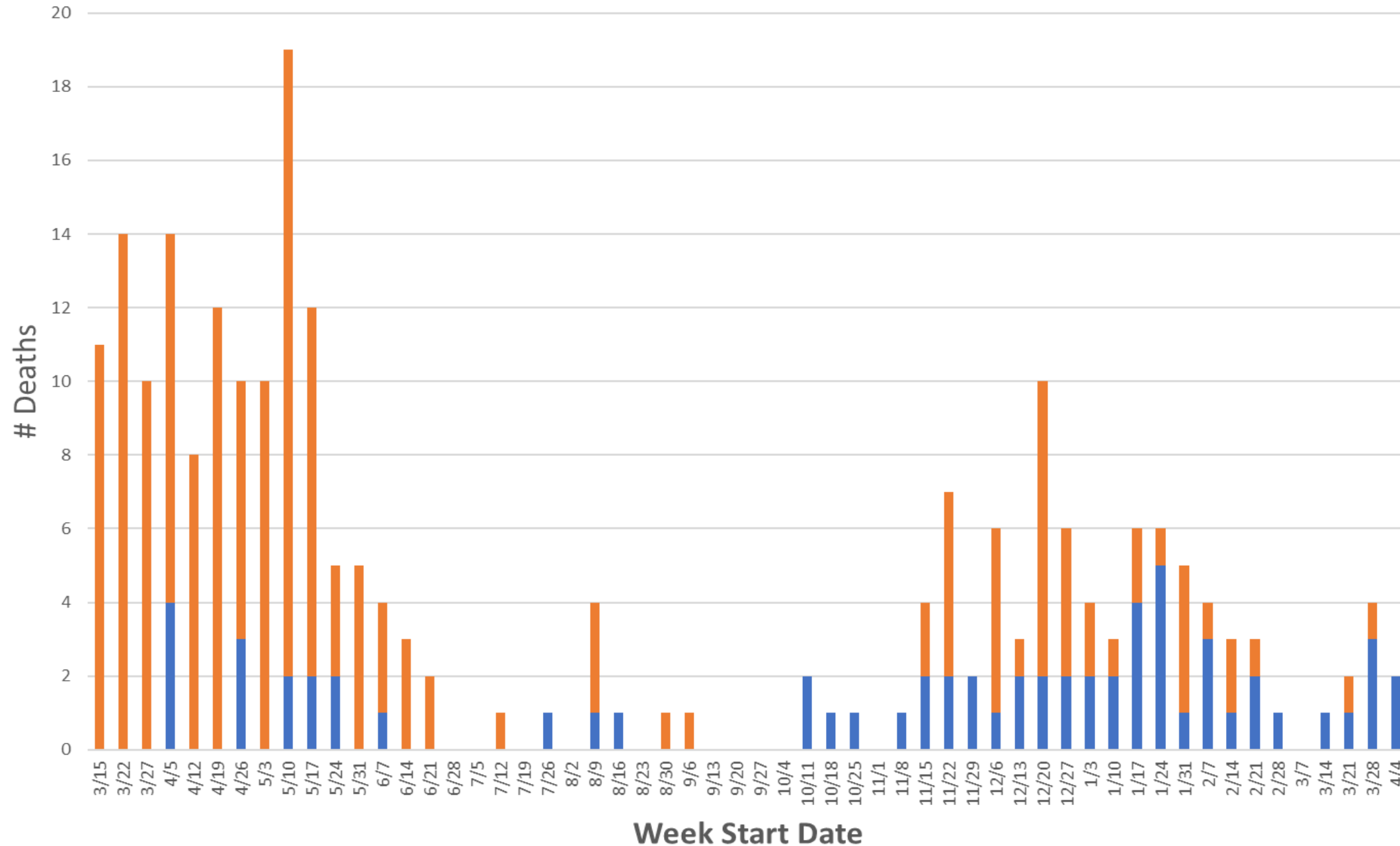
Hospitalizations and Deaths by Age Group (years): All COVID-19 Cases





COVID-19 Deaths by Week of Death

■ Conf. Comm ■ Confirmed-Facility-related deaths

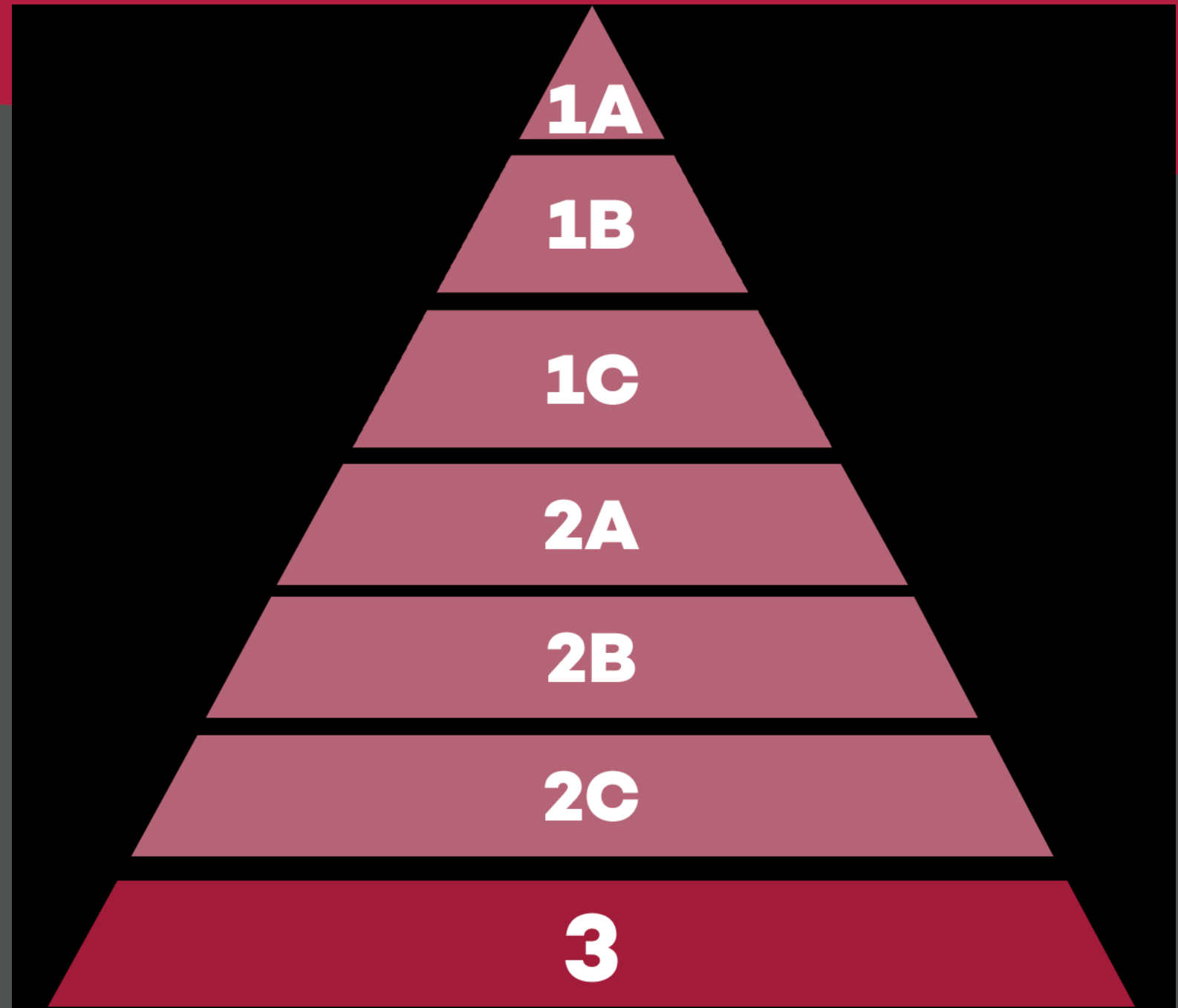


Please note:

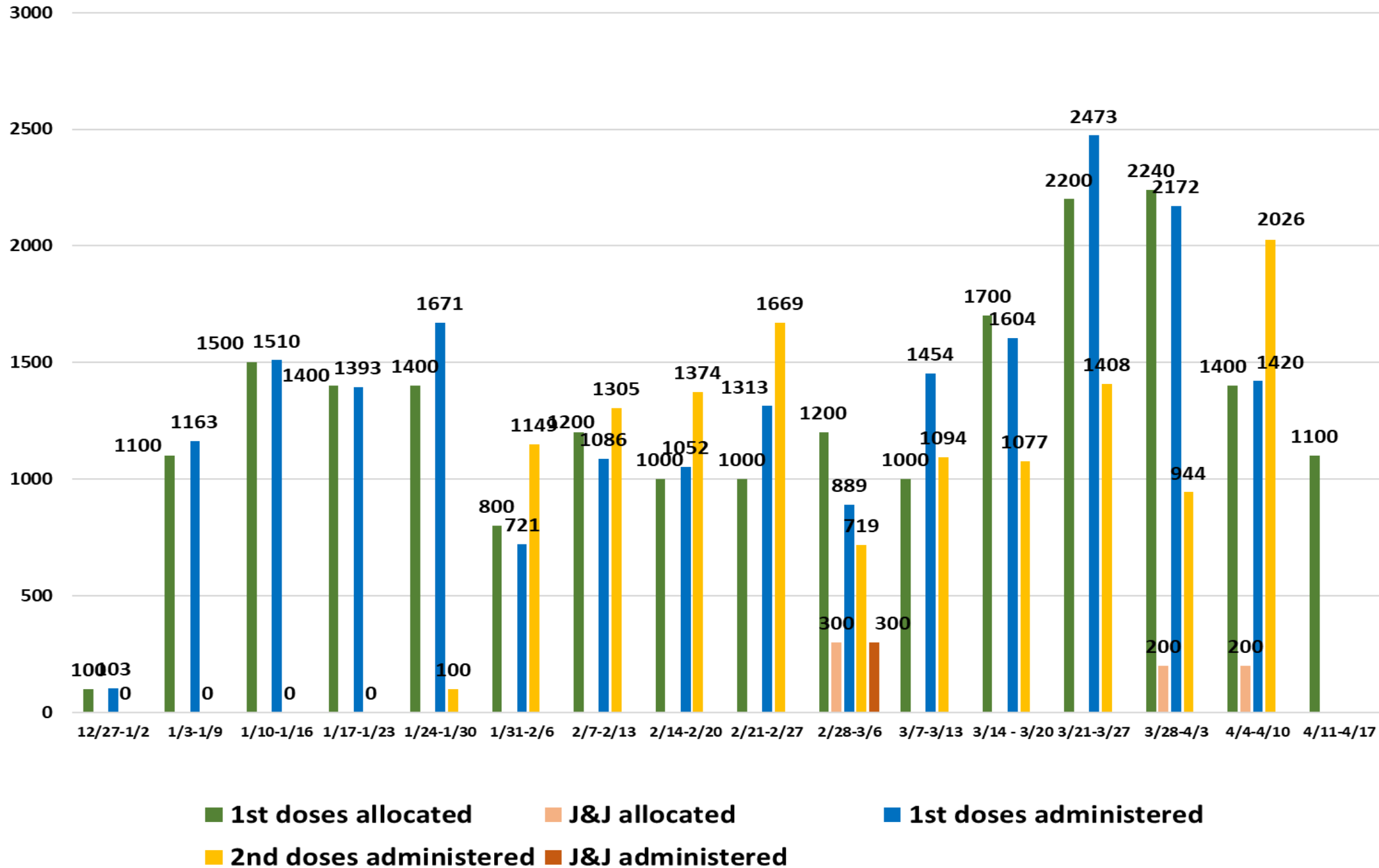
- This data does not include deaths in probable cases.

**WE ARE IN PHASE
3: ALL
MARYLANDERS
16+ ARE ELIGIBLE
TO RECEIVE THE
VACCINE**

Please note: Only the Pfizer vaccine is currently approved for people age 16-17. The Health Department does not currently offer Pfizer.



Carroll County Health Department COVID-19 Vaccinations



CCHD:
1st doses administered:
20,024 plus 300 single-dose J&J

2nd doses: 12,865

Carroll County residents receiving at least one dose of a COVID-19 vaccine: 65,384 (39% of total county population)

We will post links for open clinics on Thursdays when appointments are available. Visit our website for more information:

<https://cchd.maryland.gov/covid-19-vaccination/>

Or call us at 410-876-4848

For mass vaccination site appointments and information on other options:

1-855-MD-GOVAX

<https://onestop.md.gov/govax>



Questions?

**Carroll County
Health Department**



Public Health
Prevent. Promote. Protect.