

# **Carroll County Board of Commissioners**

## **COVID-19 Data Update**

**April 6, 2021**

**Ed Singer, LEHS**

**Carroll County Health Officer**

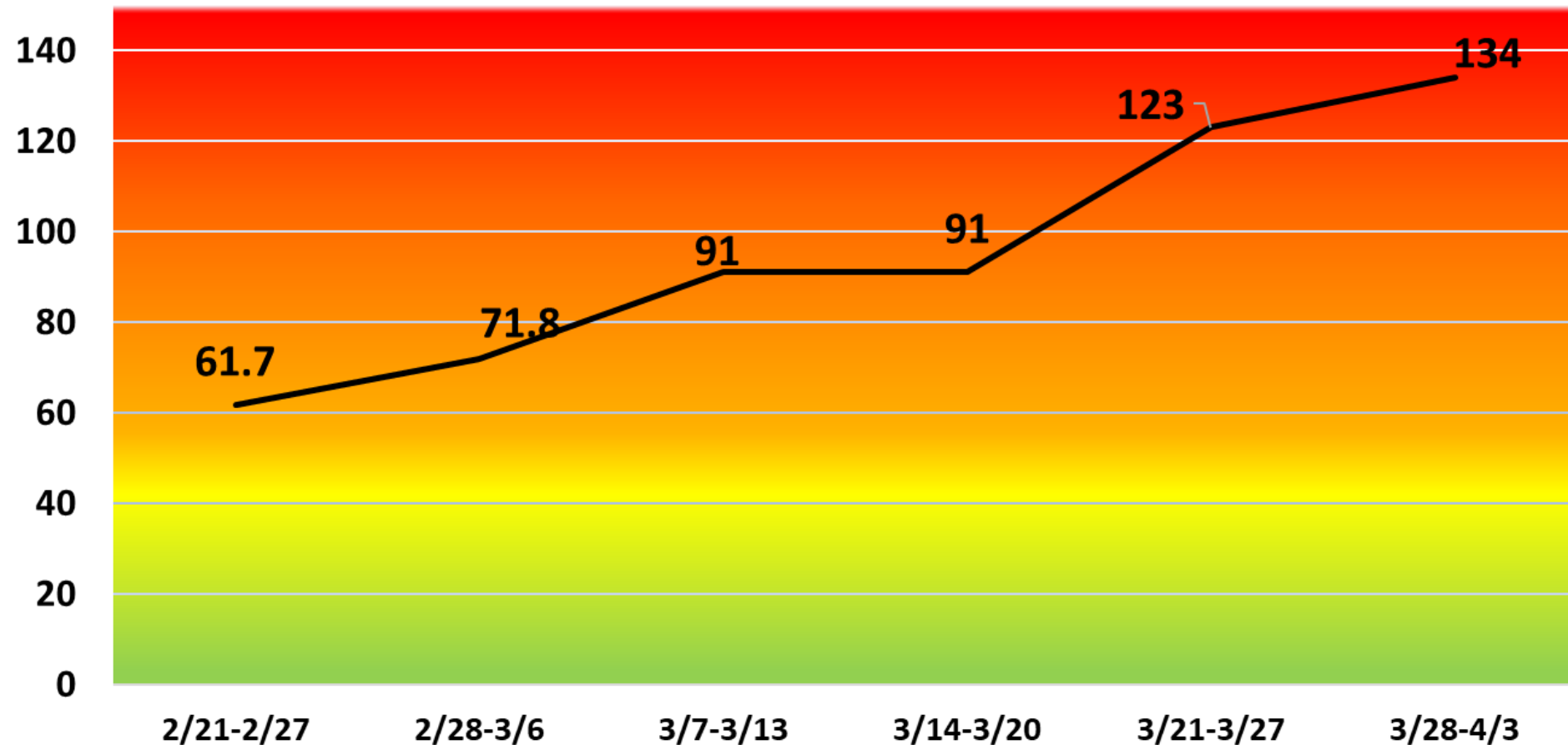
\*Please note that this data is preliminary and subject to change.

**Carroll County  
Health Department**



**Public Health**  
Prevent. Promote. Protect.

## Total cases per 100,000 per week



## Positivity rate in Carroll County:

2/21: 3.3%, low

2/28: 2.8%, low

3/7: 3.3%, low

3/14: 4.9%, low

3/23: 5.3% moderate

3/30: 5.8% moderate

4/5: 5.87%

moderate

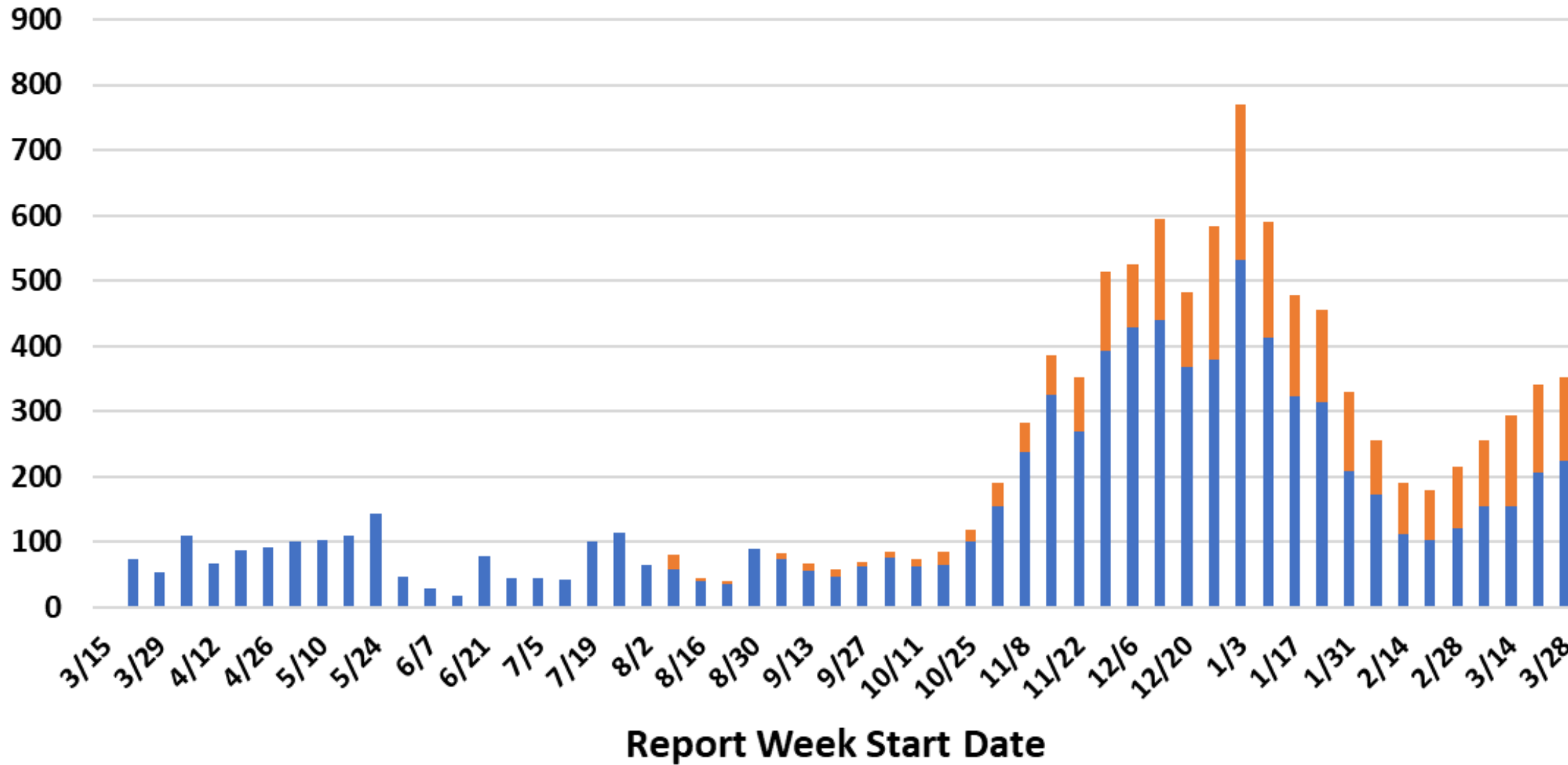
## Levels of community transmission as defined by the CDC:

- Total new cases per 100,000 in past 7 days: Low 0-9, moderate 10-49, substantial 50-99, high  $\geq 100$

- Percent positive tests in past 7 days: low  $< 5\%$ , moderate 5-7.9%, substantial 8-9.9%, high  $\geq 10\%$ )

# All COVID-19 Cases by Report Week

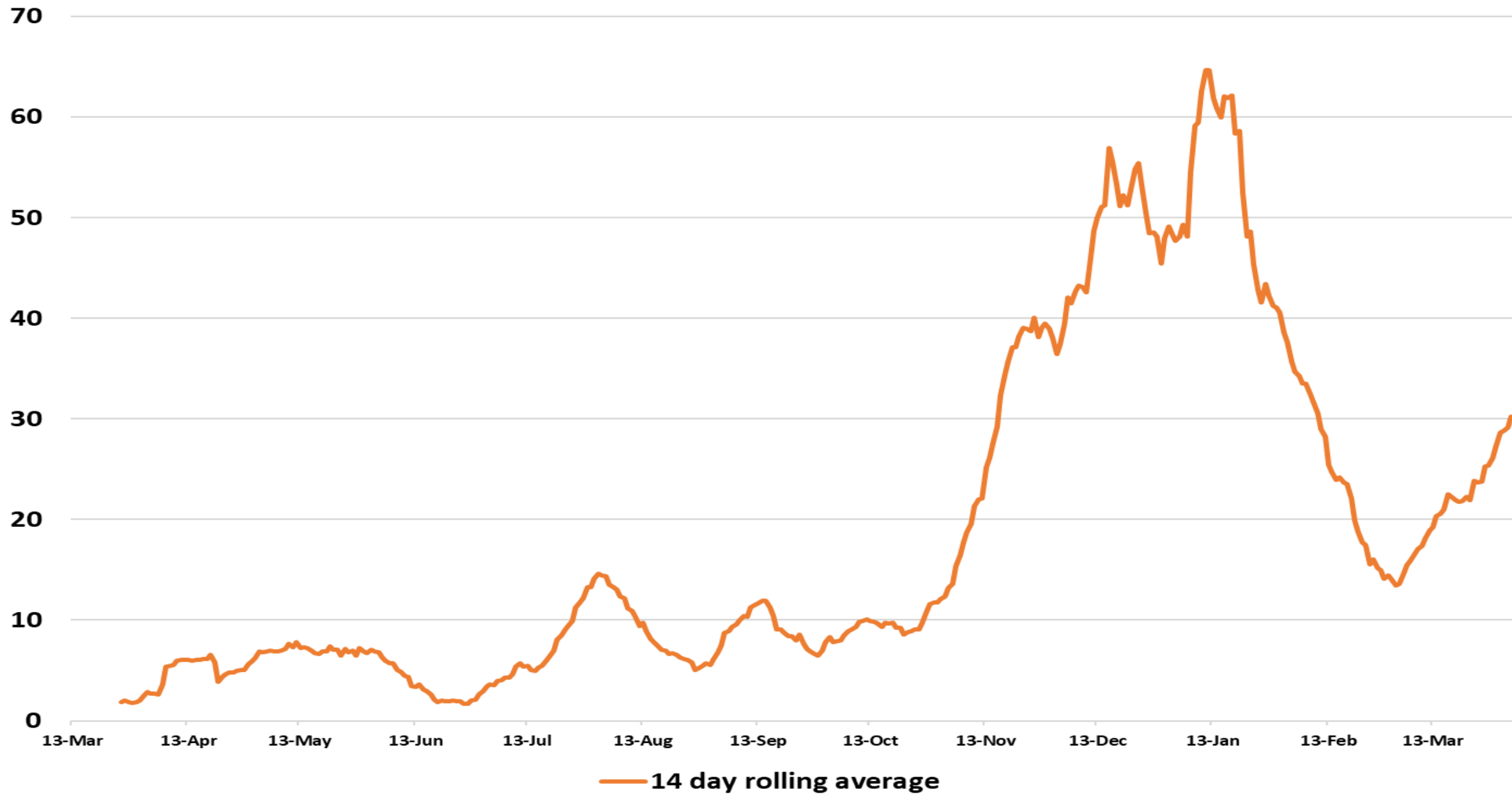
Confirmed Probable



## Probable cases

- Probable cases are those who test positive with an antigen test, not a PCR test.
- Probable cases are not included in our confirmed case totals (PCR test only).
- Cases that are confirmed with PCR tests are removed from the probable totals.

# 14-Day Rolling Average of New Community COVID-19 Cases by Report Date



Carroll County  
Health Department

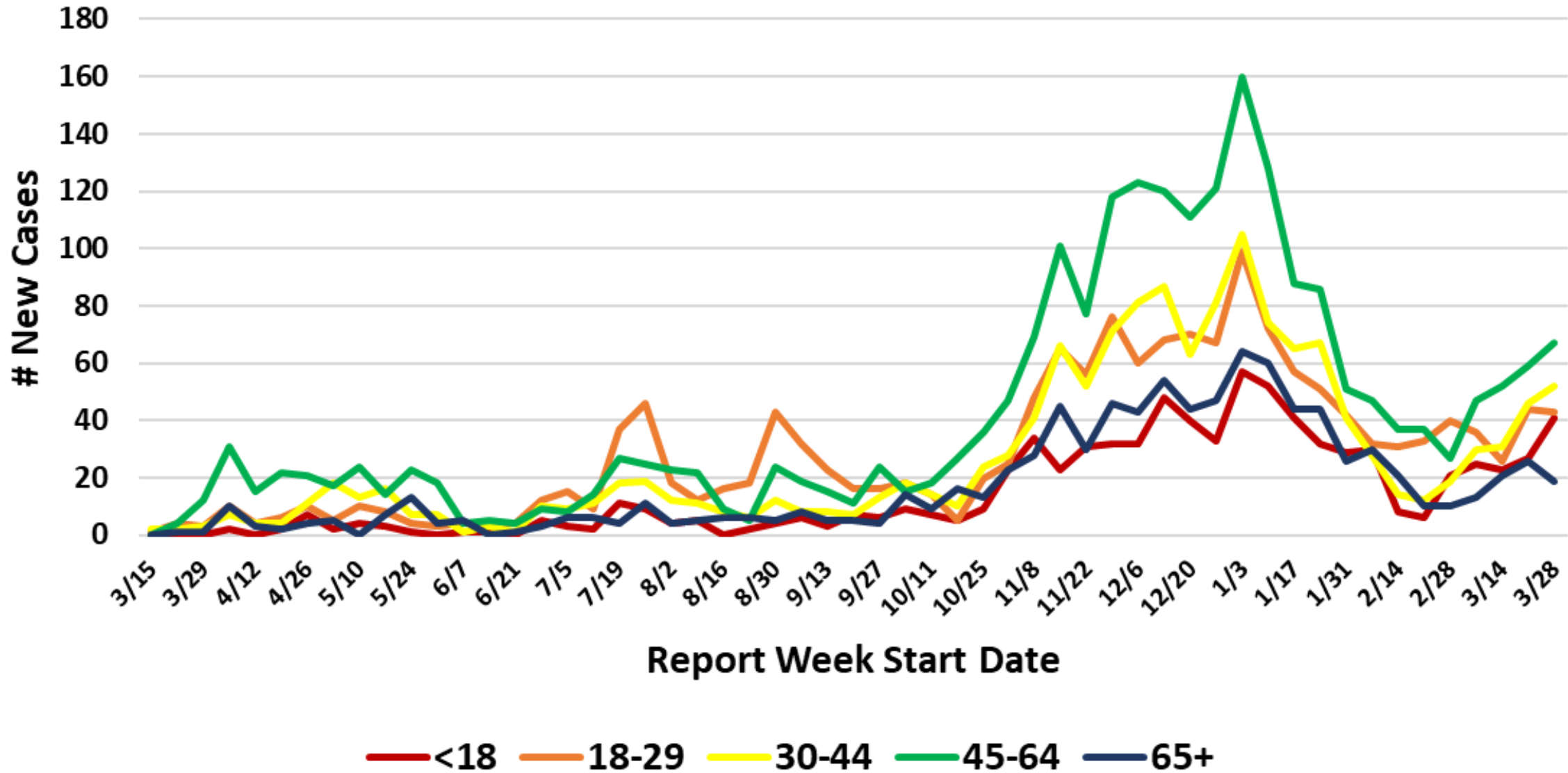


Public Health  
Prevent. Promote. Protect.

Please note: community cases only

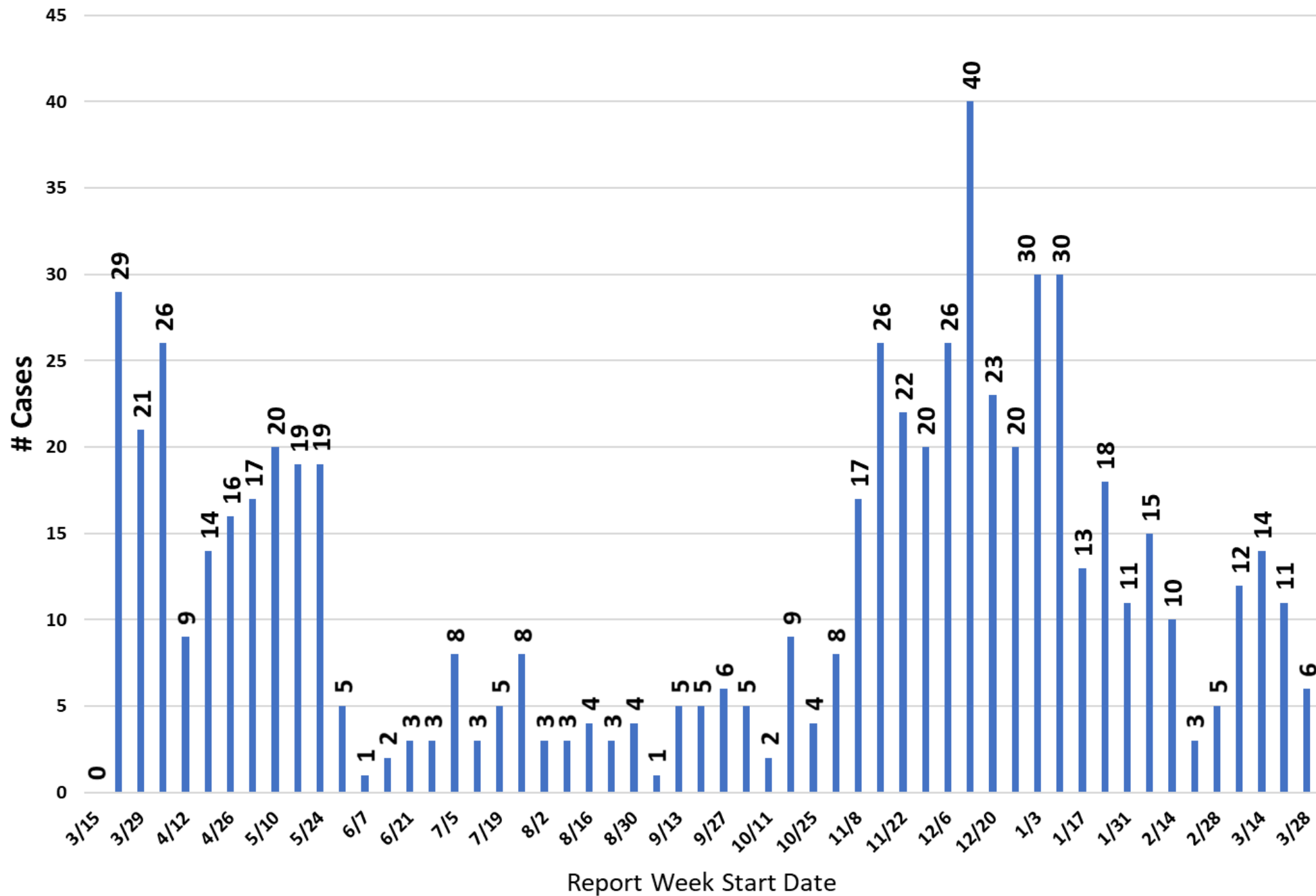


## COVID Cases: Age Groups by Report Week



Please note: community cases only

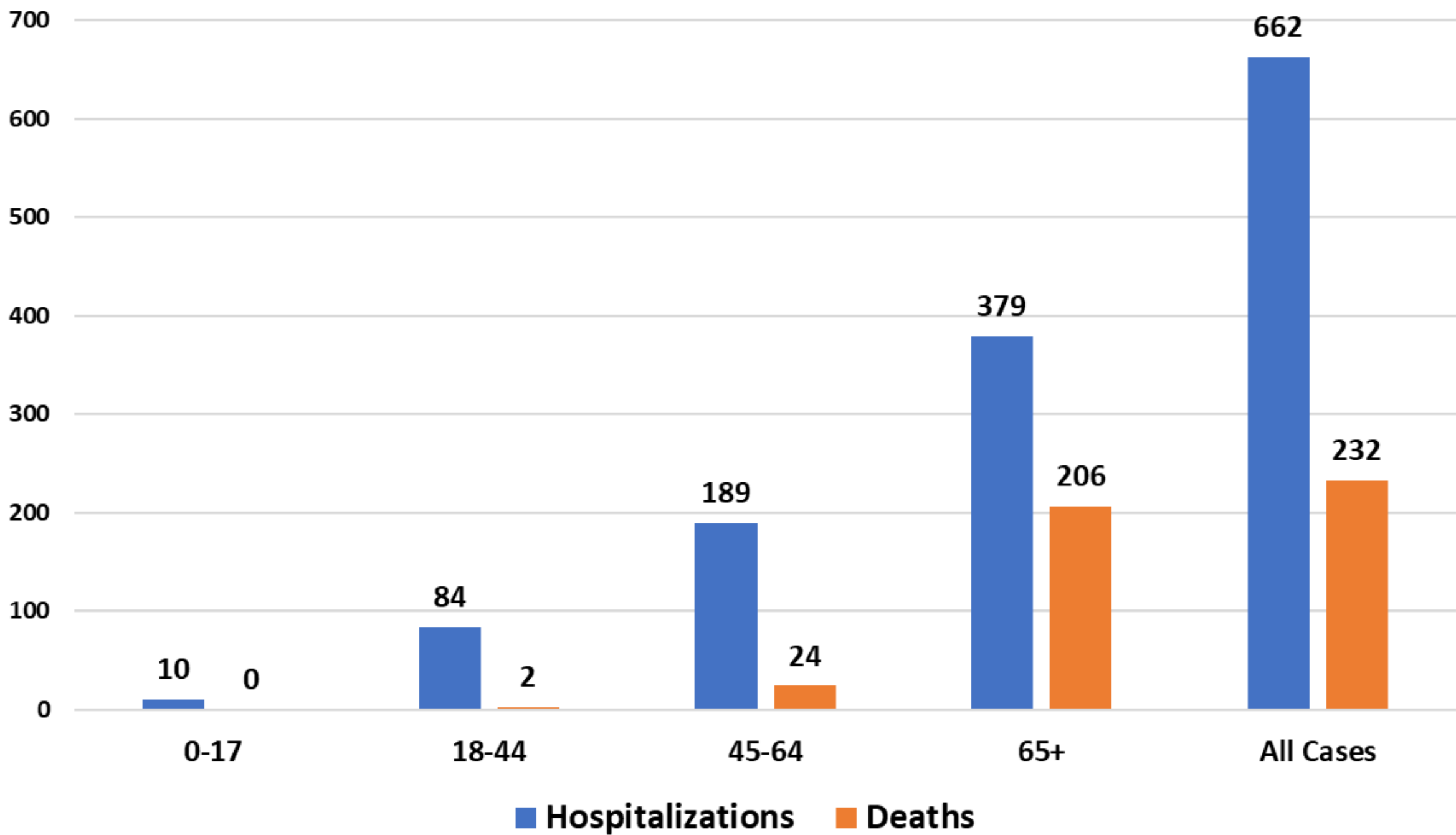
## Hospitalizations by Report Week: All COVID-19 Cases



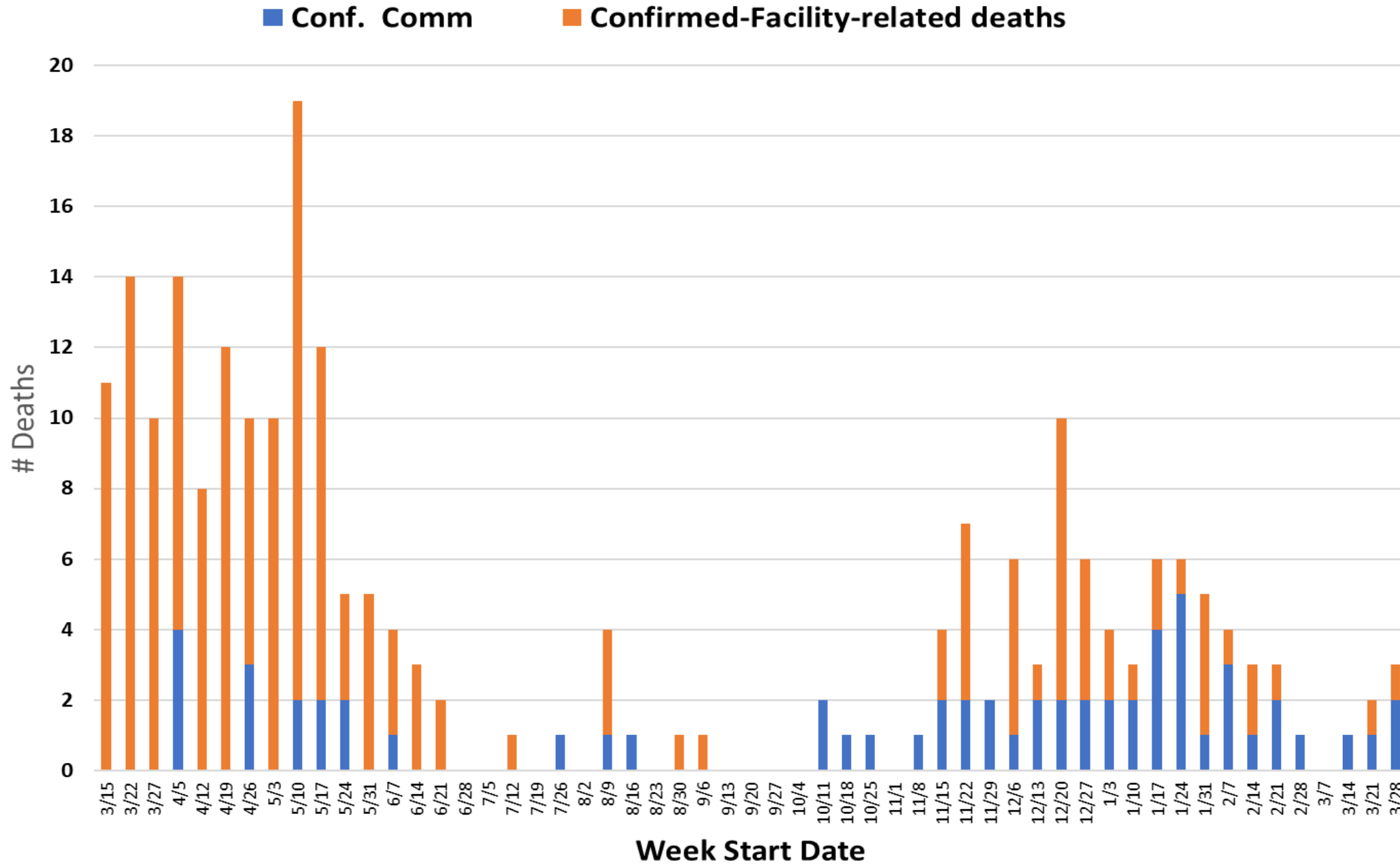
This graph shows hospitalizations by week for COVID positive Carroll County residents, in any hospital.

- Report week is the week their case was reported, which may not be the same week they were hospitalized. Only one hospitalization is noted per person.
- There is a slight data lag so recent numbers may increase.
- Additional hospital data can be found on our website:  
<https://cchd.maryland.gov/carroll-county-md-cases/>

### Hospitalizations and Deaths by Age Group (years): All COVID-19 Cases



### COVID-19 Deaths by Week of Death



Please note:

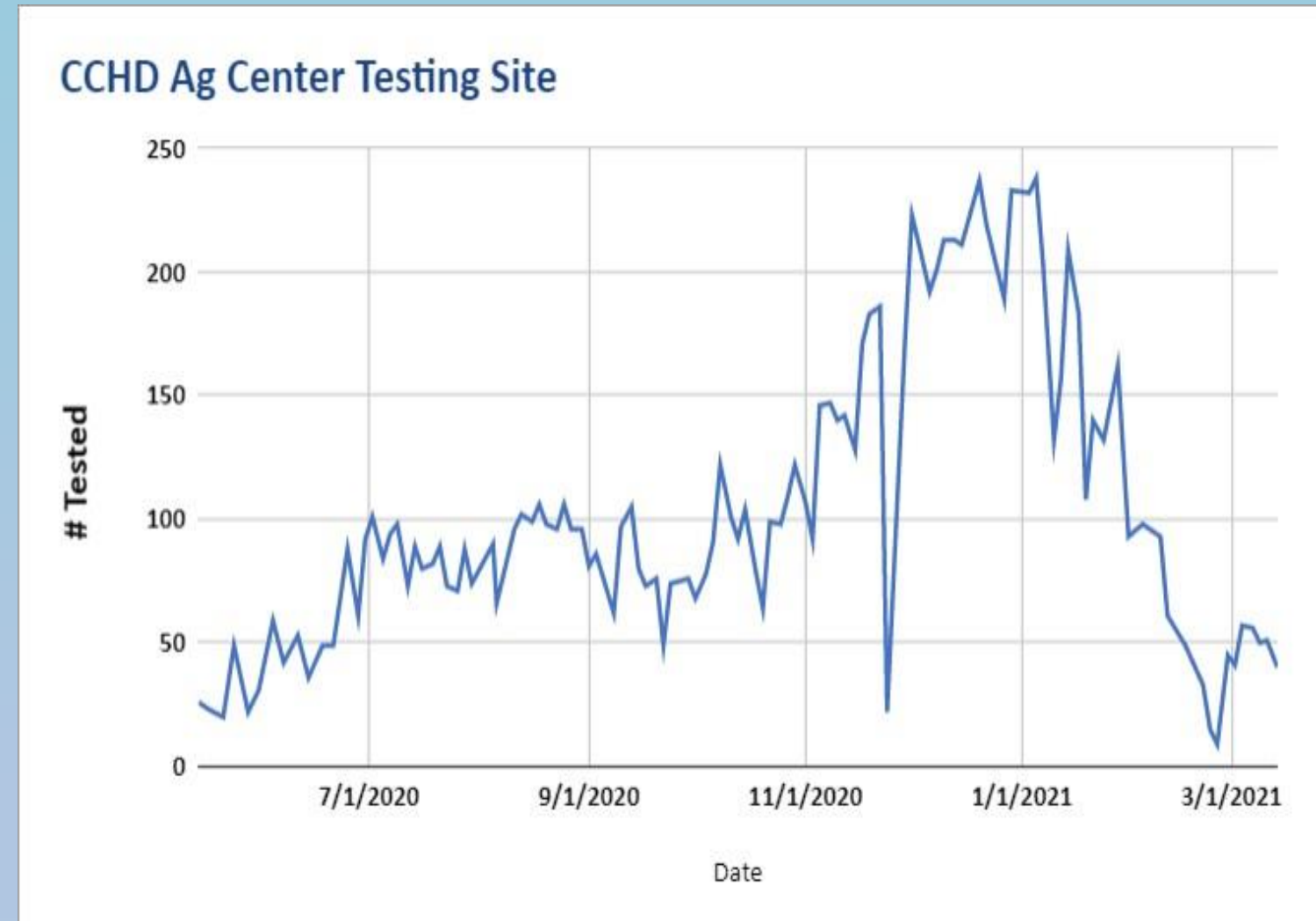
- This data does not include deaths in probable cases.

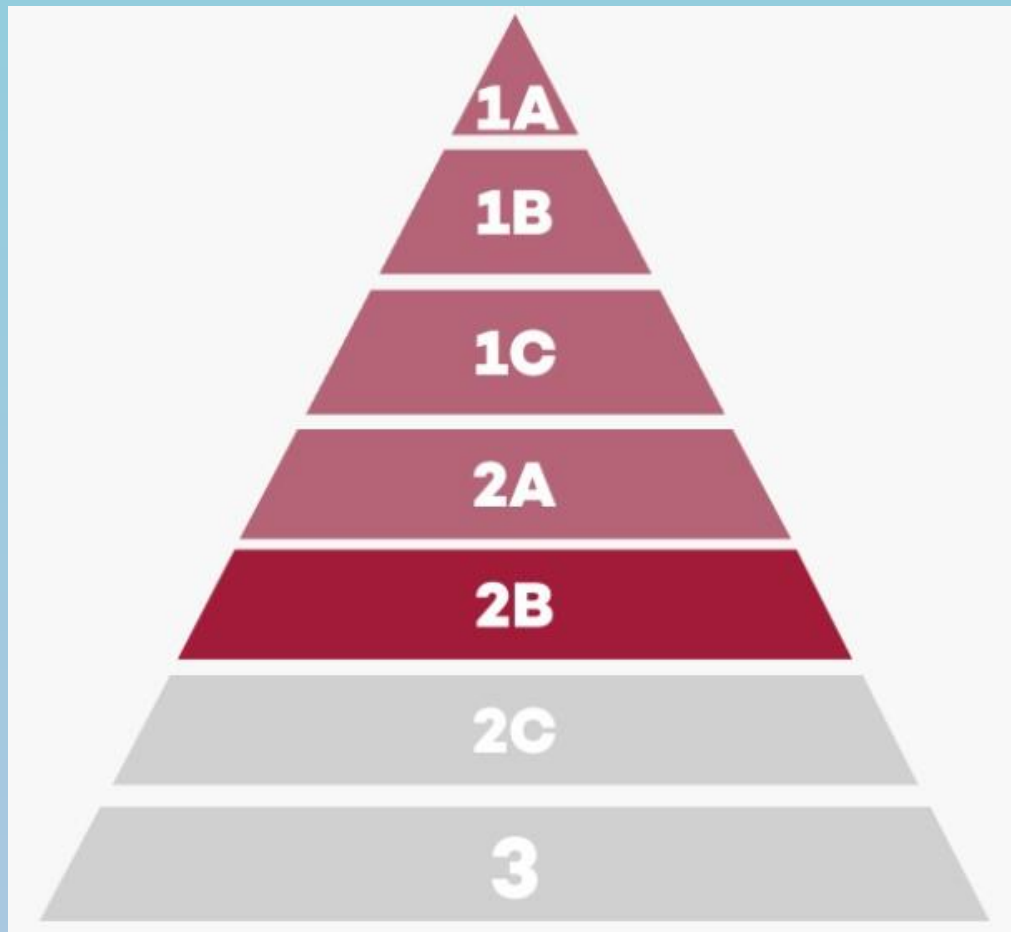


**Testing is still important and is underutilized.**

**Testing is recommended when:**

- **You have symptoms of COVID-19**
  - **You have come in close contact with someone who had symptoms or tested positive for COVID-19**
  - **After higher-risk activities like travel and indoor gatherings without masks and social distancing**
- **Please note: Testing is more accurate a few days after exposure when your viral load has built up enough to test positive. If you have had close contact with someone who had symptoms or tested positive, avoid contact with others and get tested 5 days after possible exposure.**
- **Participating in contact tracing is also critical to slow the spread of the virus.**





**As of April 6, all Marylanders 16 and older will be eligible for vaccination at Maryland's mass vaccination sites. Pre-registration is recommended, but some sites will accept walk-ins.**

**On April 12, all Marylanders 16 and older will be eligible for vaccination through all providers.**

#### **Phase 1A**

- Health care workers, nursing homes, first responders

#### **Phase 1B**

- Assisted living, Adults age 75 and older
- Education and continuity of government
- People with developmental disabilities

#### **Phase 1C**

- Adults age 65-74
- **Essential workers** in lab services, agriculture, manufacturing, postal service

#### **Phase 2A**

- Marylanders ages 60+

#### **Phase 2B - \*Maryland is currently in this stage**

- Marylanders ages 16+ with **underlying medical conditions** that increase the risk for severe COVID-19 illness
- Marylanders ages 16+ with disabilities who are receiving certain benefits and services

#### **Phase 2C**

- Marylanders 55 and older
- Essential workers in critical industries, including construction workers, food services, utilities, transportation, financial services, IT and other infrastructure

#### **Phase 3**

General population, including healthy adults ages 16+

## **Week of April 4th: Open to 1C, 2A, 2B**

**Still actively working to contact and enroll people 65+**

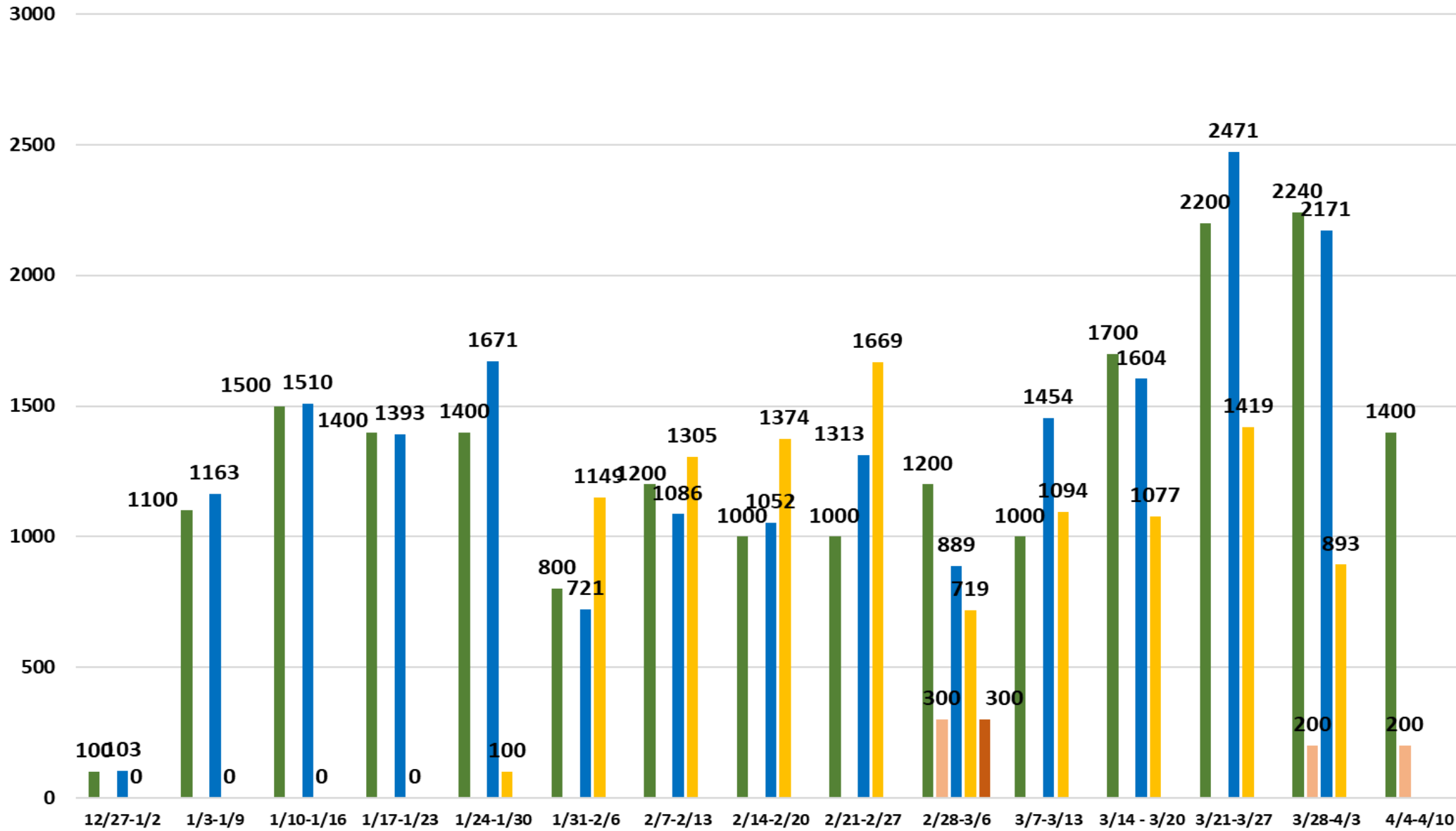
**Sent links to Phase 1C**

**Phase 2A**

**Phase 2B**

- **Working with agencies and businesses to plan for 1C and 2C essential employee vaccinations**
- **Preparing to open to all Carroll County residents 18+ next week (only Pfizer is approved for 16-17)**

## Carroll County Health Department COVID-19 Vaccinations



■ 1st doses allocated    
 ■ J&J allocated    
 ■ 1st doses administered  
■ 2nd doses administered    
 ■ J&J administered

**CCHD:**  
**1<sup>st</sup> doses: 18,601**  
**plus 300 J&J**

**2<sup>nd</sup> doses: 10,799**

**Not on chart:**  
**Carroll Hospital:**  
**1<sup>st</sup> doses: 2,852**  
**2<sup>nd</sup> doses: 2,644**

**\*This does not include long-term care facilities.**

**Please note: Week of 4/4 shows only vaccines allocated.**

**Estimated Carroll populations by COVID-19 Vaccine Priority Group**

		Estimated # Residents*	Notes
Phase 1a:	Healthcare Workers/Staff	11,343	2,738 vaccinated by CCHD
	NH Residents/Staff	>476	Pharmacies will vaccinate
	First responders, public safety, corrections	4,398	Firefighters not included in population numbers; 633 vaccinated by CCHD
Phase 1b:	Assisted Living, other congregate settings	1,058	Pharmacies will vaccinate
	Adults 75+	12,277	Estimated 9,952 vaccinated (5,445 by CCHD)
	Education and continuity of government	7,606	5,500 CCPS, 300 private schools, 736 for daycares; Continuity of government: 50; Higher Education: 750; (4,599 vaccinated by CCPS and CCHD in partnership)
Phase 1c:	Adults 65-74	16,835	Estimated 12,299 vaccinated (3,237 vaccinated by CCHD)
	Essential workers: lab services, agriculture, manufacturing, postal service	6,311	357 vaccinated by CCHD
Phase 2:	Adults 16-64 at increased risk due to comorbidities	65,000	
	Essential workers: critical utilities, transportation, food services	3,941	
Phase 3:	General population, including healthy adults age 16-64		

**Note: residents may belong to more than one group**

**Total Carroll County residents who have been vaccinated (at least 1 dose): 57,063**

Sources: Crisp Reporting Services (MDH ImmuNet data), preliminary data through 4/4/2021, MDH PrepMod

**Table: Population and COVID-19 Vaccination Estimates for Carroll County residents aged 65+ years**

	65 - 74 Years		75+ Years		65+ Years	
	Estimated Population	Estimated % Vaccinated	Estimated Population	Estimated % Vaccinated	Estimated Population	Estimated % Vaccinated
Hispanic (All Races)	195	51.6	143	34.2	<b>338</b>	<b>44.4</b>
Non-Hispanic White	15,812	72.3	11,575	81.1	<b>27,387</b>	<b>76.0</b>
Non-Hispanic Black	489	76.5	289	89.0	<b>778</b>	<b>81.2</b>
Non-Hispanic Asian	211	71.1	186	54.3	<b>397</b>	<b>63.2</b>
Non-Hispanic Other/Multi	128	100.0	84	100.0	<b>212</b>	<b>100.0</b>
<b>Total</b>	<b>16,835</b>	<b>72.5</b>	<b>12,277</b>	<b>80.5</b>	<b>29,112</b>	<b>75.9</b>

Source: Crisp Reporting Services (MDH ImmuNet data), preliminary data through 4/4/2021

**- Additional outreach to Hispanic populations planned**

# Scheduled Clinics for 1<sup>st</sup> Doses

Week of 4/4

- Westminster

Week of 4/11

- South Carroll
- Westminster

Week of 4/18

- North Carroll
- Westminster



\*Working on larger more centralized clinics; some weekend and evening hours for people who are working

If you or someone you know is over 65+ and has not yet been vaccinated, call the Health Department's COVID-19 call center at **410-876-4848**.

For vaccine information, interest forms and updates:

<https://cchd.maryland.gov/covid-19-vaccination/>





# Questions?

**Carroll County  
Health Department**



**Public Health**  
Prevent. Promote. Protect.