

Carroll County Board of Commissioners

COVID-19 Data Update April 15, 2021

**Maggie Kunz, MPH
Carroll County Health Planner**

*Please note that this data is preliminary and subject to change.

**Carroll County
Health Department**

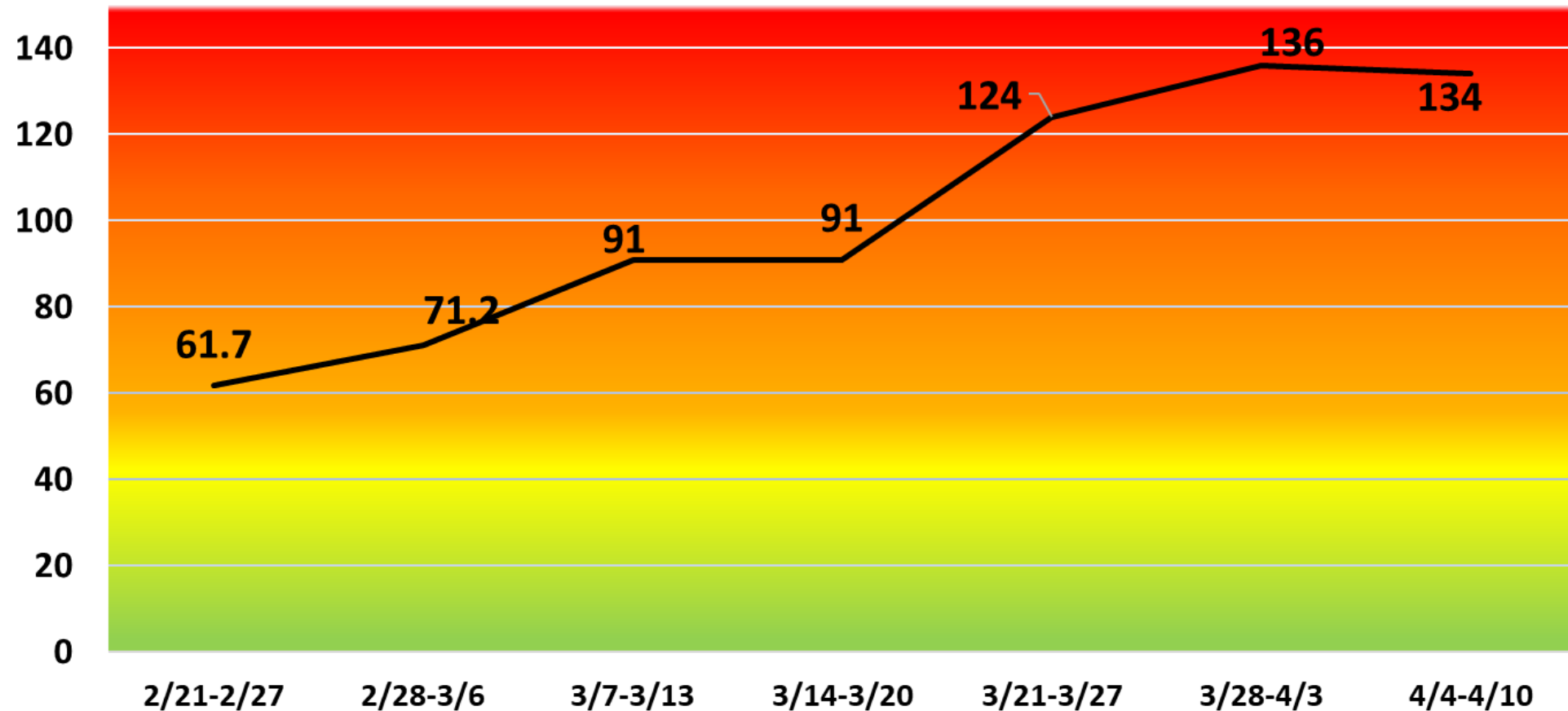


Public Health
Prevent. Promote. Protect.

Levels of community transmission as defined by the CDC:

- Total new cases per 100,000 in past 7 days: low 0-9, moderate 10-49, substantial 50-99, high ≥ 100
- Percent positive tests in past 7 days: low $<5\%$, moderate 5-7.9%, substantial 8-9.9%, high $\geq 10\%$

Total new cases per 100,000 per week



Total new cases per 100,000 this week: 134, high

Positivity rate in Carroll County:

2/21: 3.3%, low

2/28: 2.8%, low

3/7: 3.3%, low

3/14: 4.9%, low

3/23: 5.3%, moderate

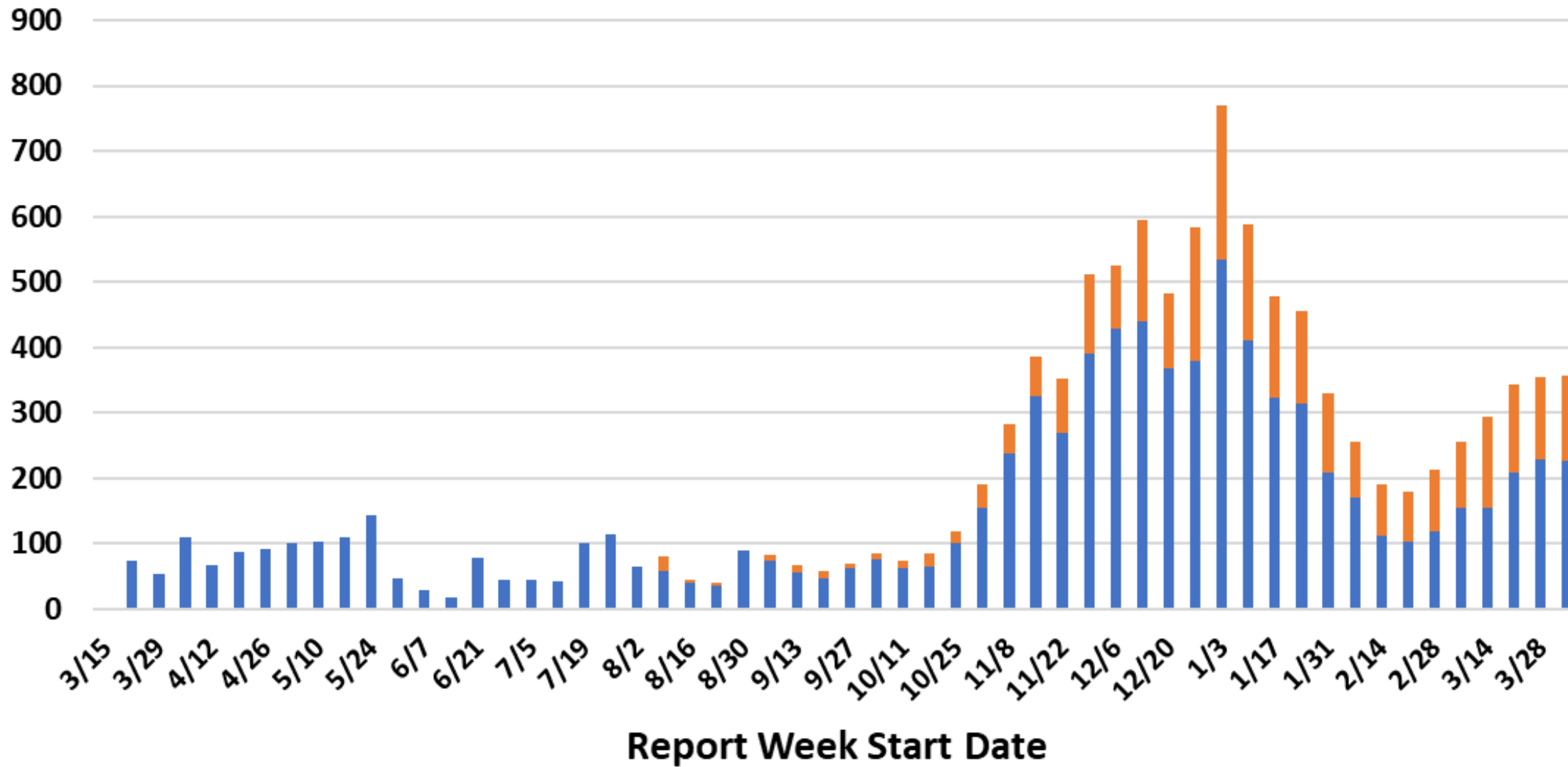
3/30: 5.8%, moderate

4/5: 5.87%, moderate

4/13 5.25%, moderate

All COVID-19 Cases by Report Week

Confirmed Probable

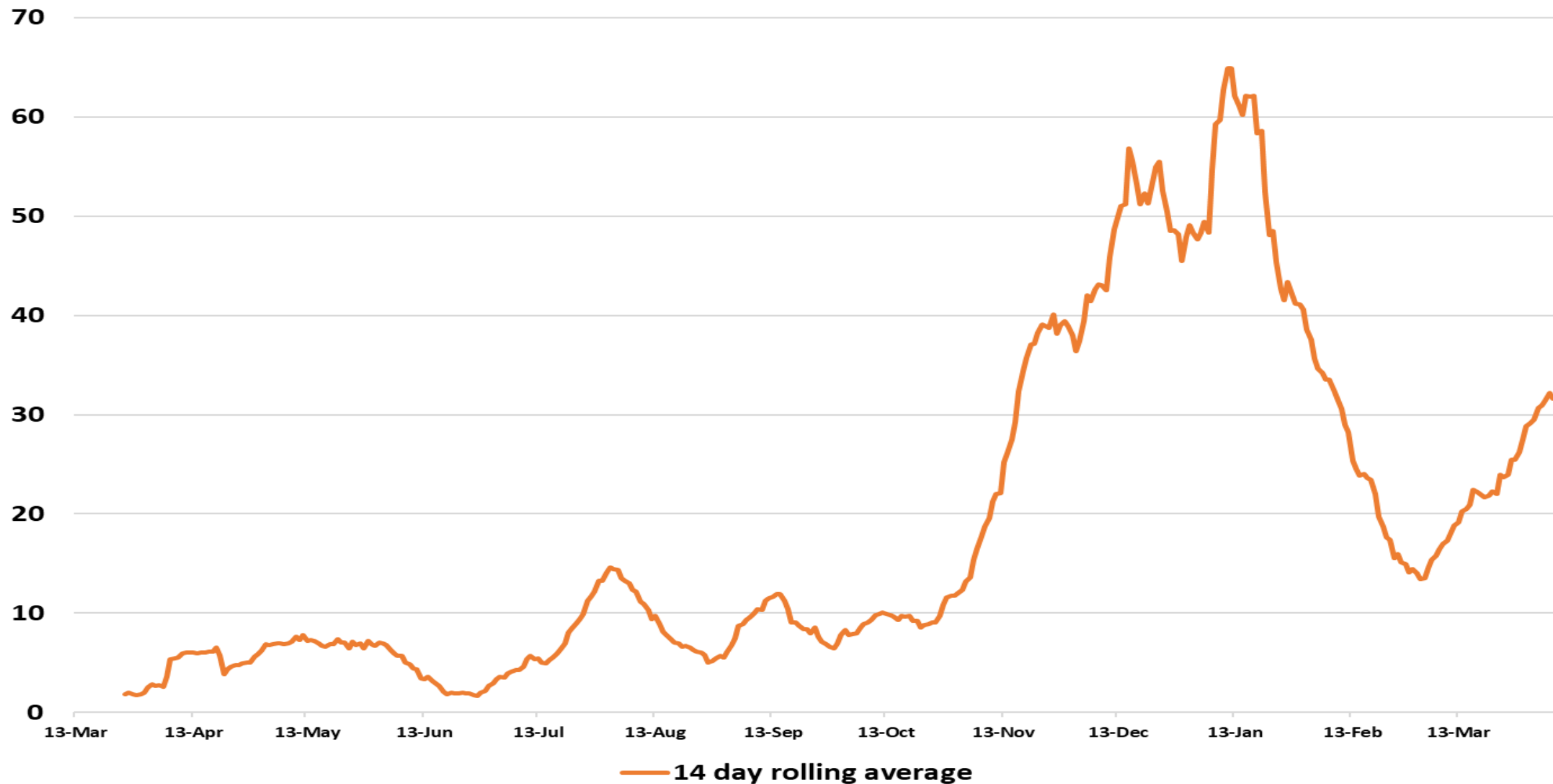


Probable cases

- Probable cases are those who test positive with an antigen test, not a PCR test.
- Probable cases are not included in our confirmed case totals (PCR test only).
- Cases that are confirmed with PCR tests are removed from the probable totals.

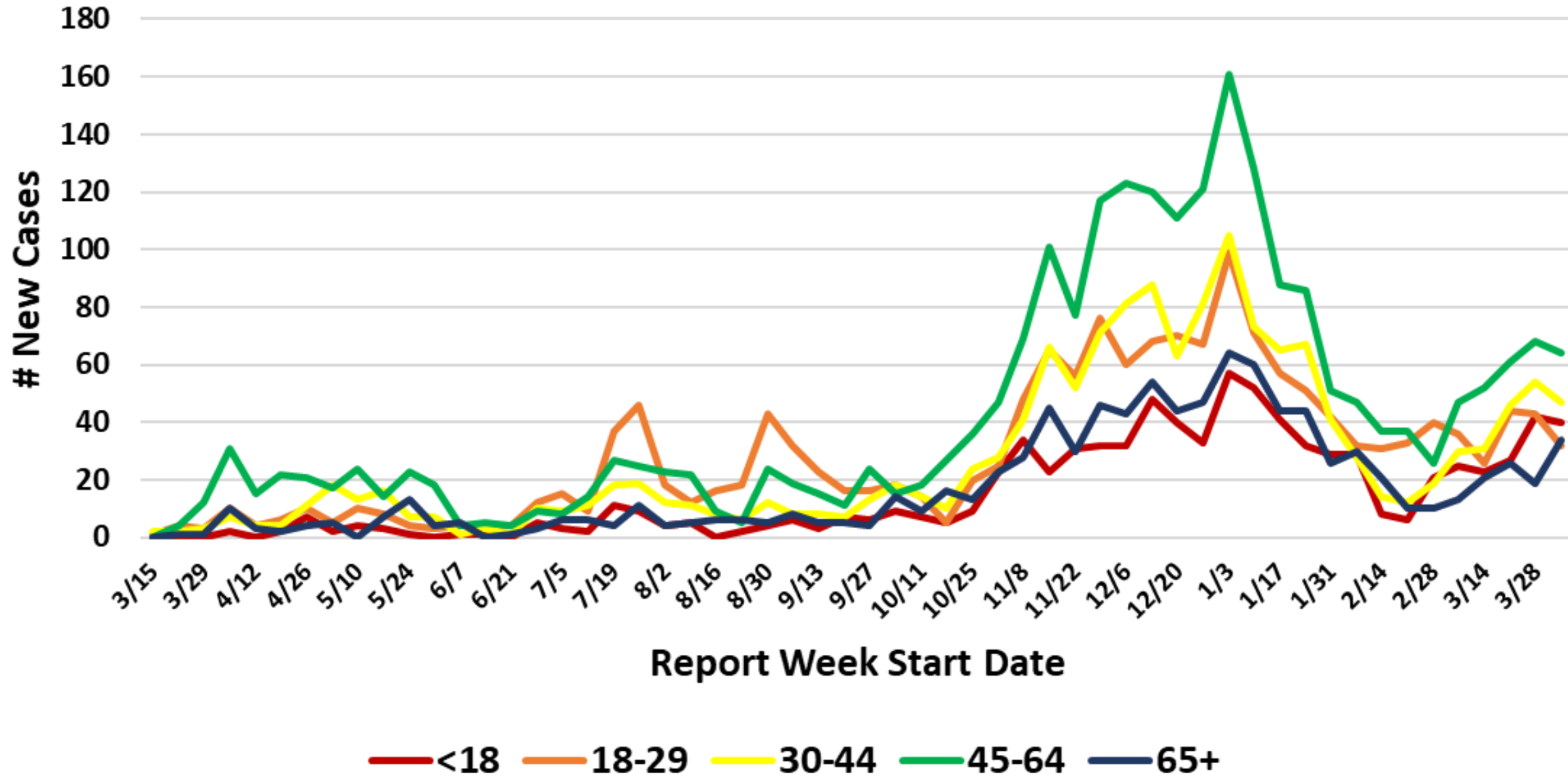


14-Day Rolling Average of New Community COVID-19 Cases by Report Date



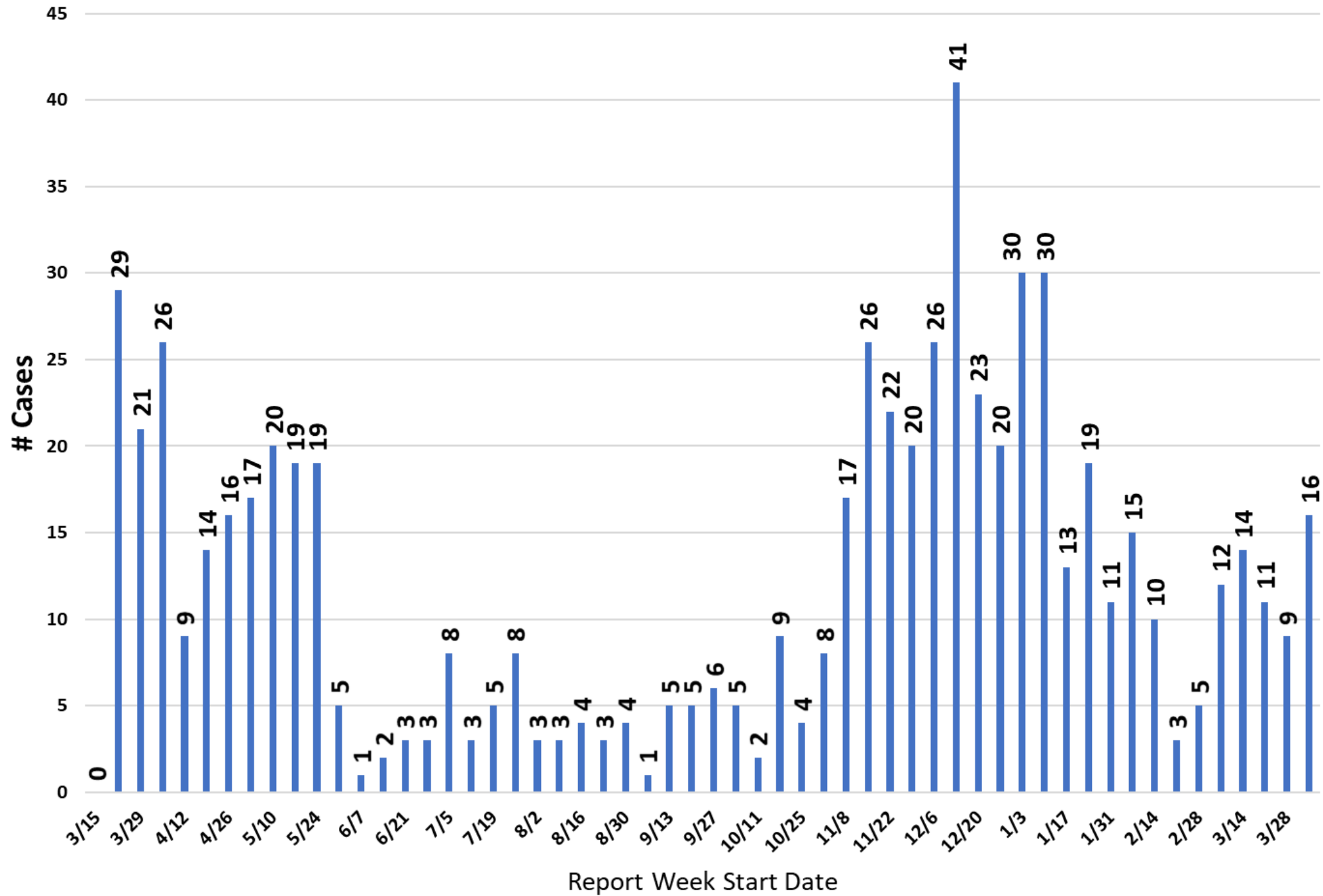
Please note: community cases only

COVID Cases: Age Groups by Report Week



Community cases only

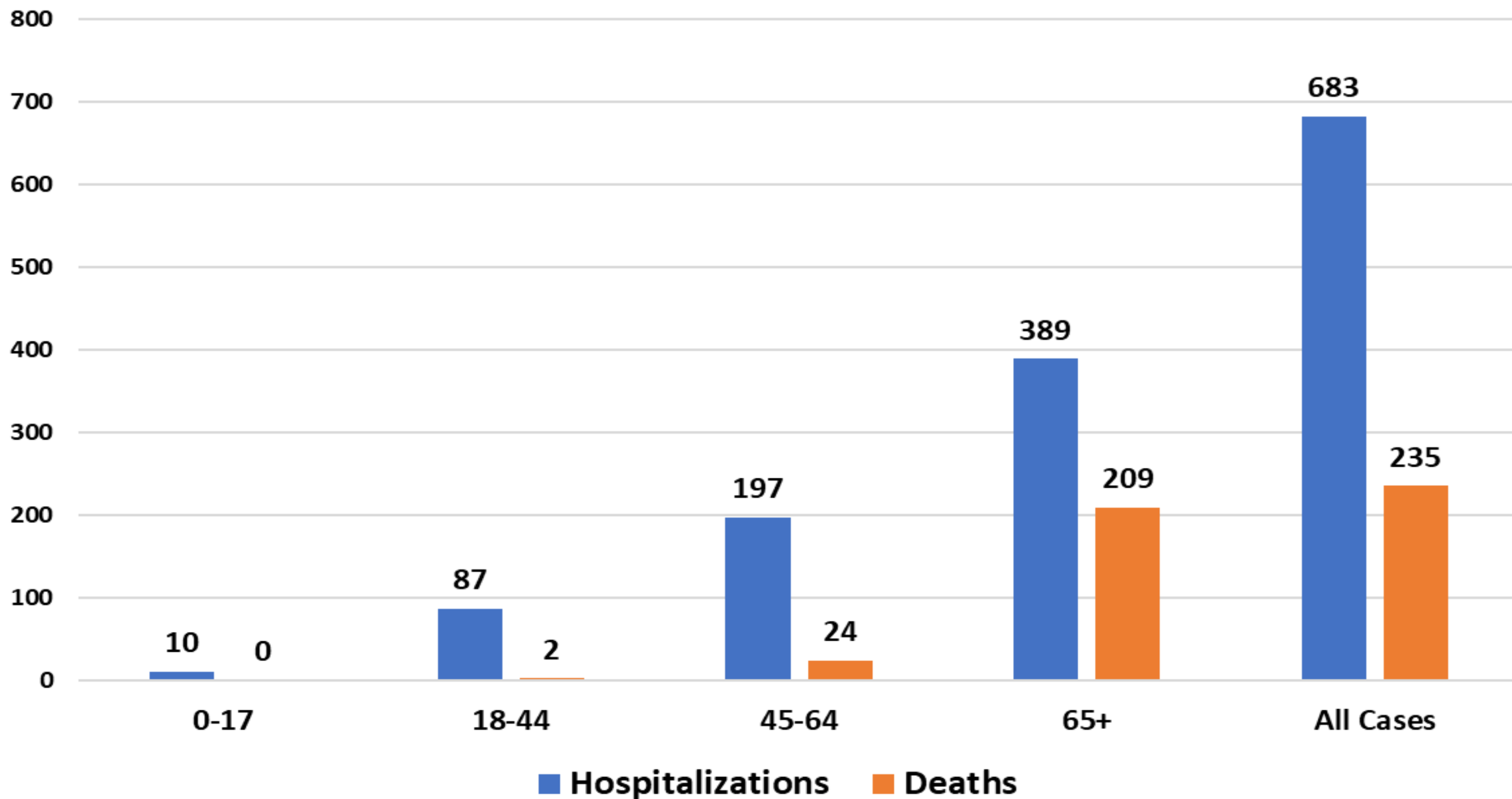
Hospitalizations by Report Week: All COVID-19 Cases



This graph shows hospitalizations by week for COVID positive Carroll County residents, in any hospital.

- Report week is the week their case was reported, which may not be the same week they were hospitalized. Only one hospitalization is noted per person.
- There is a slight data lag so recent numbers may increase.
- Additional hospital data can be found on our website: <https://cchd.maryland.gov/carroll-county-md-cases/>

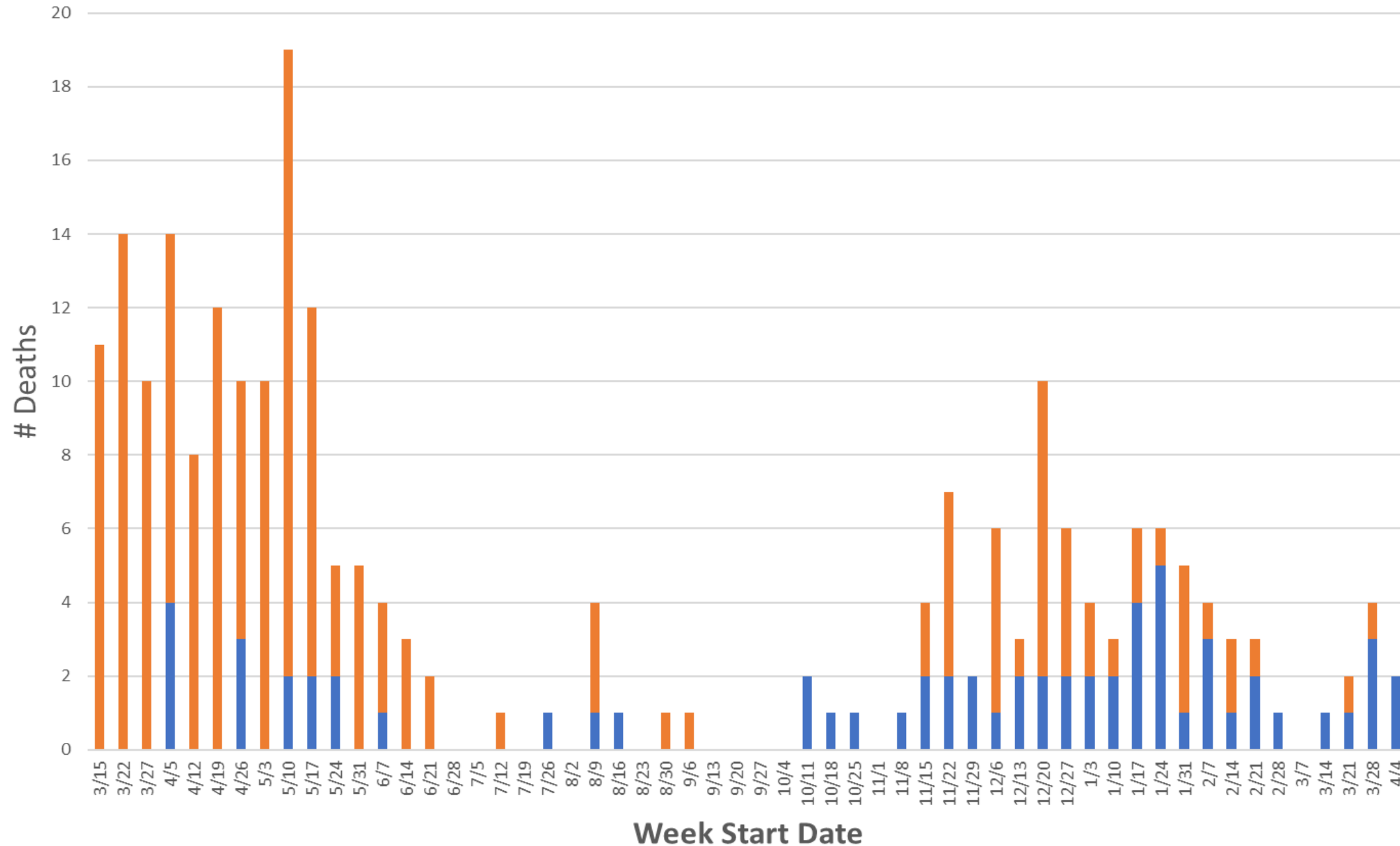
Hospitalizations and Deaths by Age Group (years): All COVID-19 Cases





COVID-19 Deaths by Week of Death

■ Conf. Comm ■ Confirmed-Facility-related deaths



Please note:

- This data does not include deaths in probable cases.

Testing is still important and is underutilized.

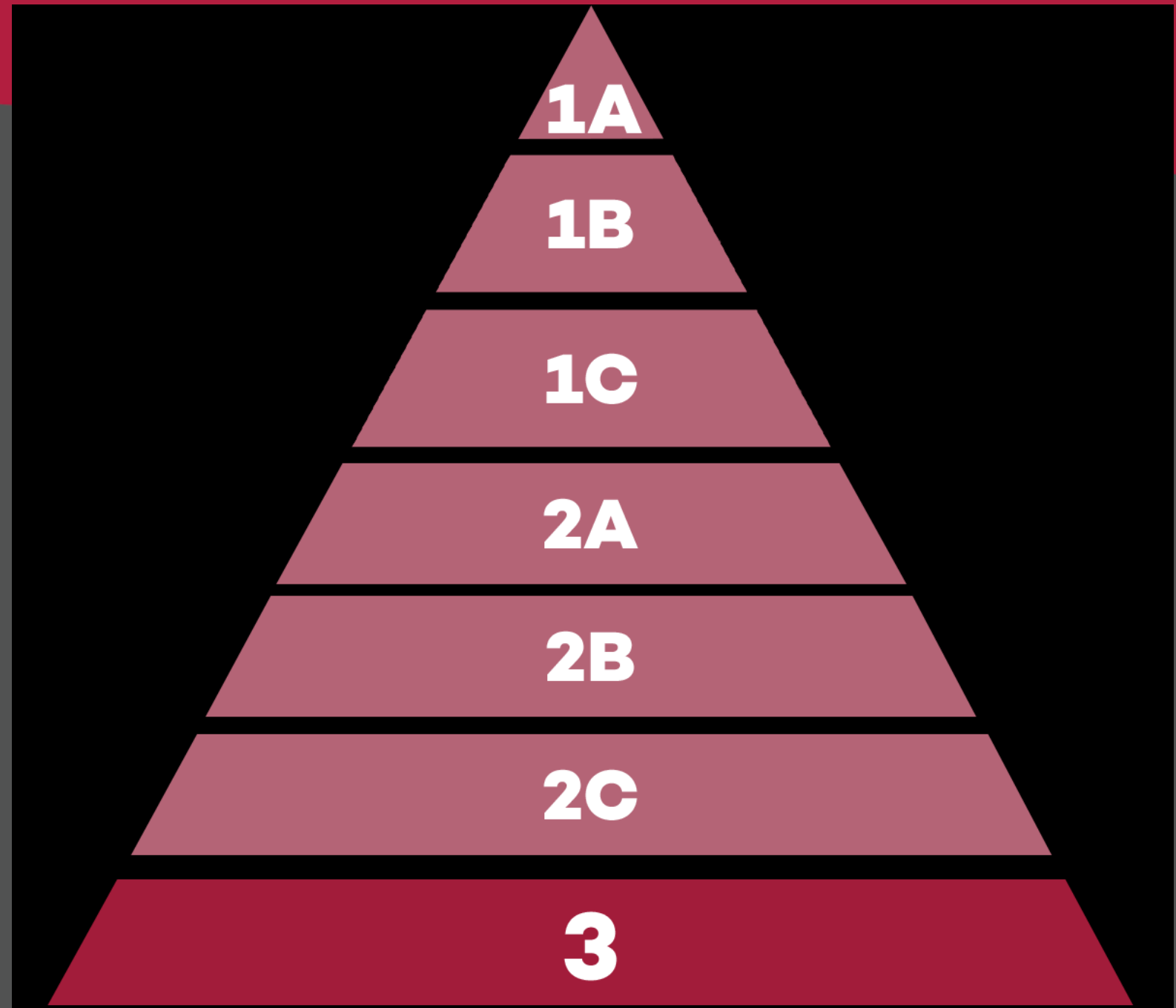
Testing is recommended when:

- **You have symptoms of COVID-19**
 - **You have come in close contact with someone who had symptoms or tested positive for COVID-19**
 - **After higher-risk activities like travel and indoor gatherings without masks and social distancing**
- **Please note: Testing is more accurate a few days after exposure when your viral load has built up enough to test positive. If you have had close contact with someone who had symptoms or tested positive, avoid contact with others and get tested 5 days after possible exposure.**
- **Participating in contact tracing is also critical to slow the spread of the virus.**

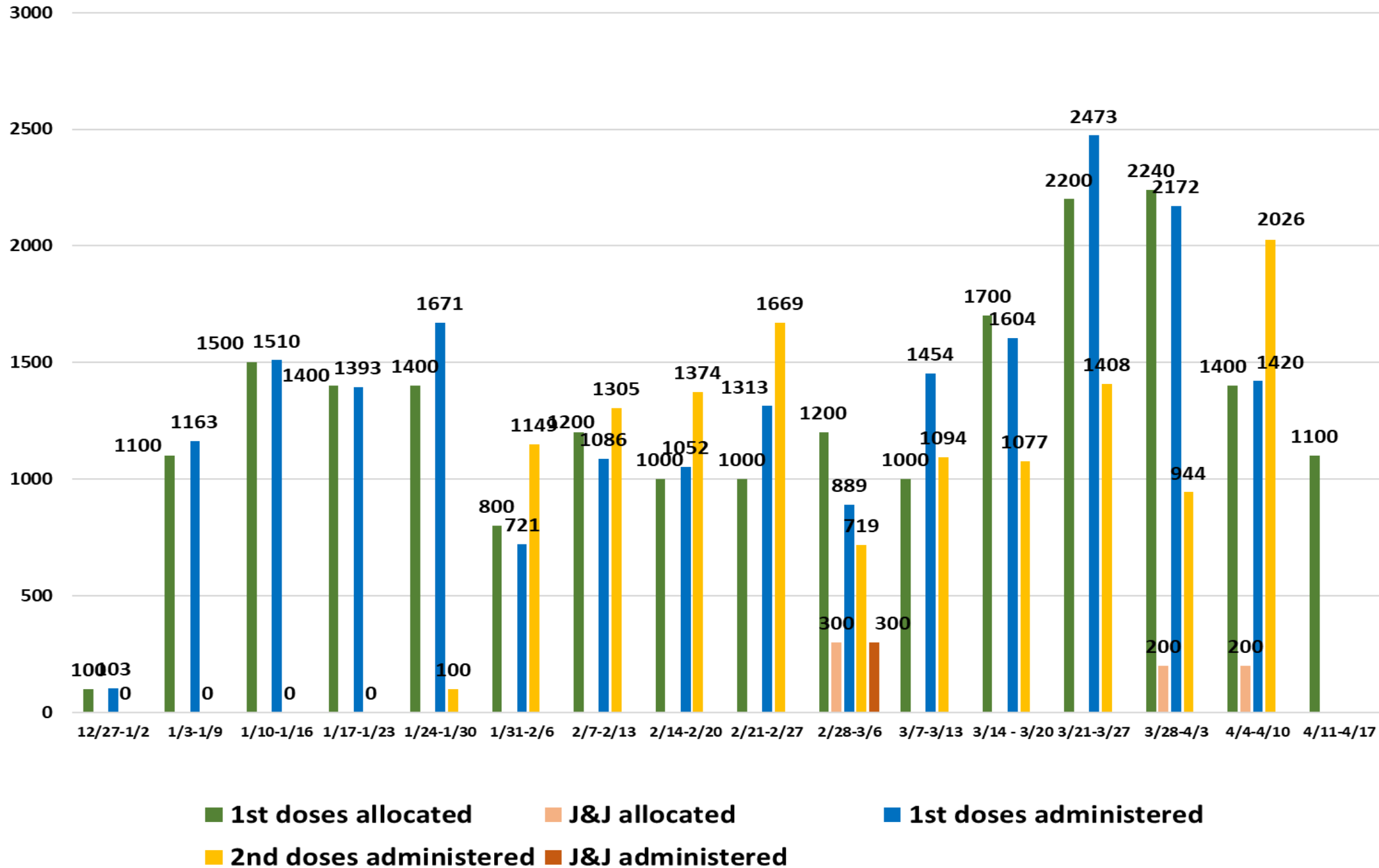


**WE ARE IN PHASE
3: ALL
MARYLANDERS
16+ ARE ELIGIBLE
TO RECEIVE THE
VACCINE**

Please note: Only the Pfizer vaccine is currently approved for people age 16-17. The Health Department does not currently offer Pfizer.



Carroll County Health Department COVID-19 Vaccinations



CCHD:
1st doses administered:
20,024 plus 300 single-dose J&J

2nd doses: 12,865

Carroll County residents receiving at least one dose of a COVID-19 vaccine: 65,384 (39% of total county population)

Estimated Carroll populations by COVID-19 Vaccine Priority Group			
		Estimated # Residents*	Notes
Phase 1a:	Healthcare Workers/Staff	11,343	2,738 vaccinated by CCHD
	NH Residents/Staff	>476	Pharmacies will vaccinate
	First responders, public safety, corrections	4,398	Firefighters not included in population numbers; 633 vaccinated by CCHD
Phase 1b:	Assisted Living, other congregate settings	1,058	Pharmacies will vaccinate
	Adults 75+	12,277	Estimated 10,392 vaccinated (5,549 by CCHD)
	Education and continuity of government	7,606	5,500 CCPS, 300 private schools, 736 for daycares; Continuity of government: 50; Higher Education: 750; (4,599 vaccinated by CCPS and CCHD in partnership)
Phase 1c:	Adults 65-74	16,835	Estimated 13,202 vaccinated (3,379 vaccinated by CCHD)
	Essential workers: lab services, agriculture, manufacturing, postal service	6,311	449 vaccinated by CCHD
Phase 2:	Adults 16-64 at increased risk due to comorbidities	65,000	
	Essential workers: critical utilities, transportation, food services	3,941	932 vaccinated by CCHD
Phase 3:	General population, including healthy adults age 16-64	107,847	41,790 vaccinated (9,040 by CCHD)

Table: Population and COVID-19 Vaccination Estimates for Carroll County residents aged 65+ years

	65 - 74 Years		75+ Years		65+ Years	
	Estimated Population	Estimated % Vaccinated	Estimated Population	Estimated % Vaccinated	Estimated Population	Estimated % Vaccinated
Hispanic (All Races)	195	56.0	143	37.0	338	48.0
Non-Hispanic White	15,812	77.0	11,575	84.0	27,387	80.0
Non-Hispanic Black	489	83.0	289	93.0	778	86.0
Non-Hispanic Asian	211	75.0	186	58.0	397	67.0
Non-Hispanic Other/Multi	128	100.0	84	100.0	212	100.0
Total	16,835	77.0	12,277	84.0	29,112	80.0

Source: Crisp Reporting Services (MDH ImmuNet data), preliminary data through 4/13/2021

Scheduled Clinics for 1st Doses

Week of 4/11

- South Carroll
- Westminster

Week of 4/18

- North Carroll
- Westminster



*Our allocation was reduced this week and use of the J&J vaccine is on pause, so we are not able to share links for registration this week. We hope to share them with the public again next week. We will continue to assist people 65+ and others who need assistance to register.

The FDA and CDC are recommending that the U.S. pause their use of the Johnson and Johnson COVID-19 vaccine due to six cases of a “rare and severe” type of blood clot.

Based on the federal government’s recommendation and out of an abundance of caution, the Maryland Department of Health directs all Maryland COVID-19 vaccine providers to pause the administration of Johnson & Johnson COVID-19 vaccines until further federal guidance is issued.

- The Health Department will pause in our use of this vaccine while it is being reviewed.
- Our scheduled J&J clinic used Moderna instead.
- This may affect how much vaccine we receive from the state and reduce the number of people we can vaccinate right now.
- We only had one J&J clinic on March 5, more than 3 weeks ago.
- We are not aware of any reports of this side effect in Carroll County.
- This type of side effect has not been seen with the mRNA technology in Moderna or Pfizer.
- This is an extremely rare disorder involving blood clots – less than one in a million (6 cases out of 6.8 million vaccinated); all cases are in women age 18-48; symptoms appeared 6-13 days after vaccination.
- Anyone who received the J&J vaccine who develops severe headache, abdominal pain, leg pain, or shortness of breath within three weeks of vaccination should contact their healthcare provider.

We will post links for open clinics on Thursdays when appointments are available. Visit our website for more information:

<https://cchd.maryland.gov/covid-19-vaccination/>

Or call us at 410-876-4848

For mass vaccination site appointments and information on other options:

1-855-MD-GOVAX

<https://onestop.md.gov/govax>



Questions?

**Carroll County
Health Department**



Public Health
Prevent. Promote. Protect.