

Carroll County Board of Commissioners

COVID-19 Data Update February 18, 2021

**Ed Singer, L.E.H.S.
Carroll County Health Planner**

*Please note that this data is preliminary and subject to change.

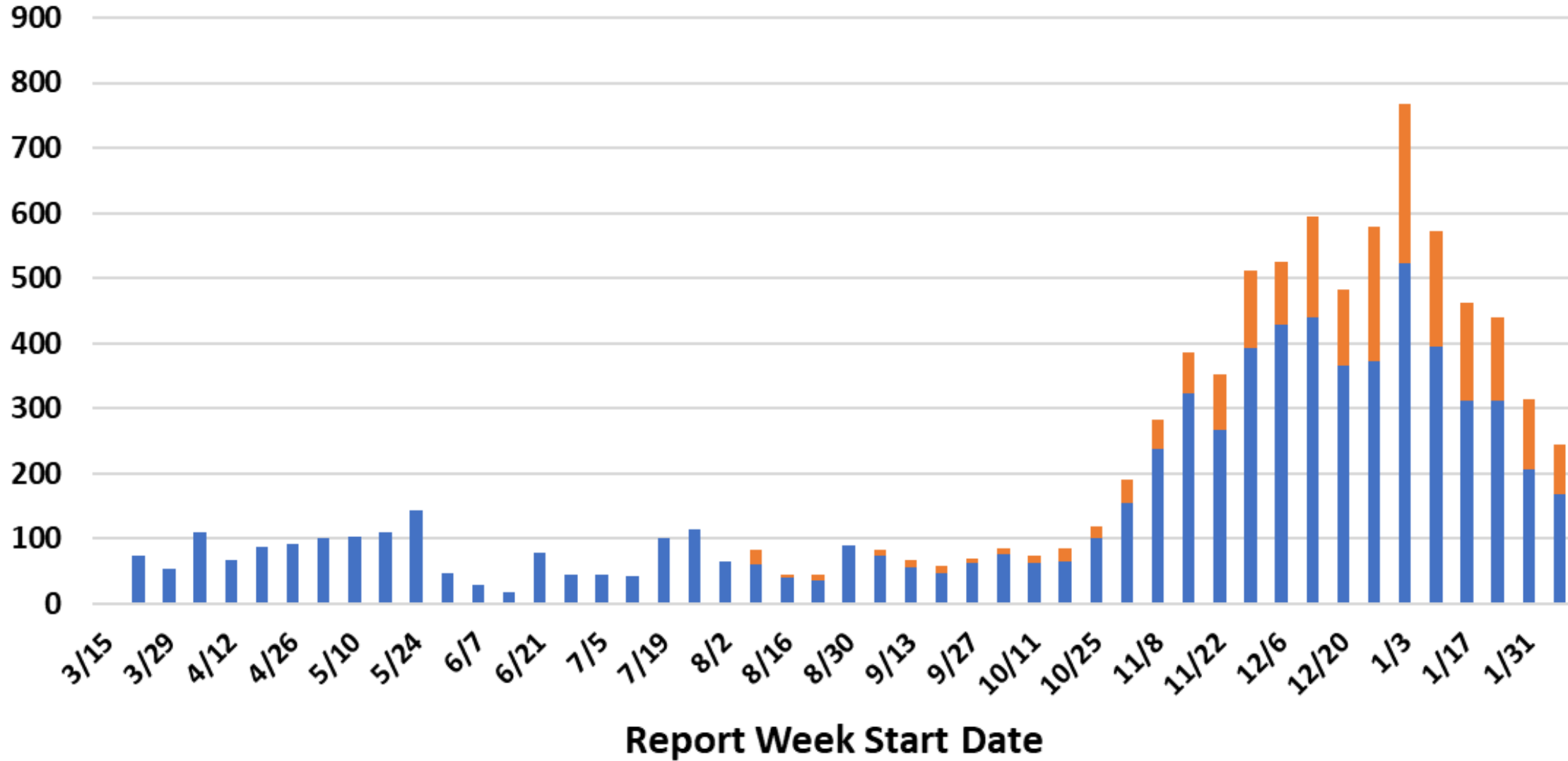
**Carroll County
Health Department**



Public Health
Prevent. Promote. Protect.

All COVID-19 Cases by Report Week

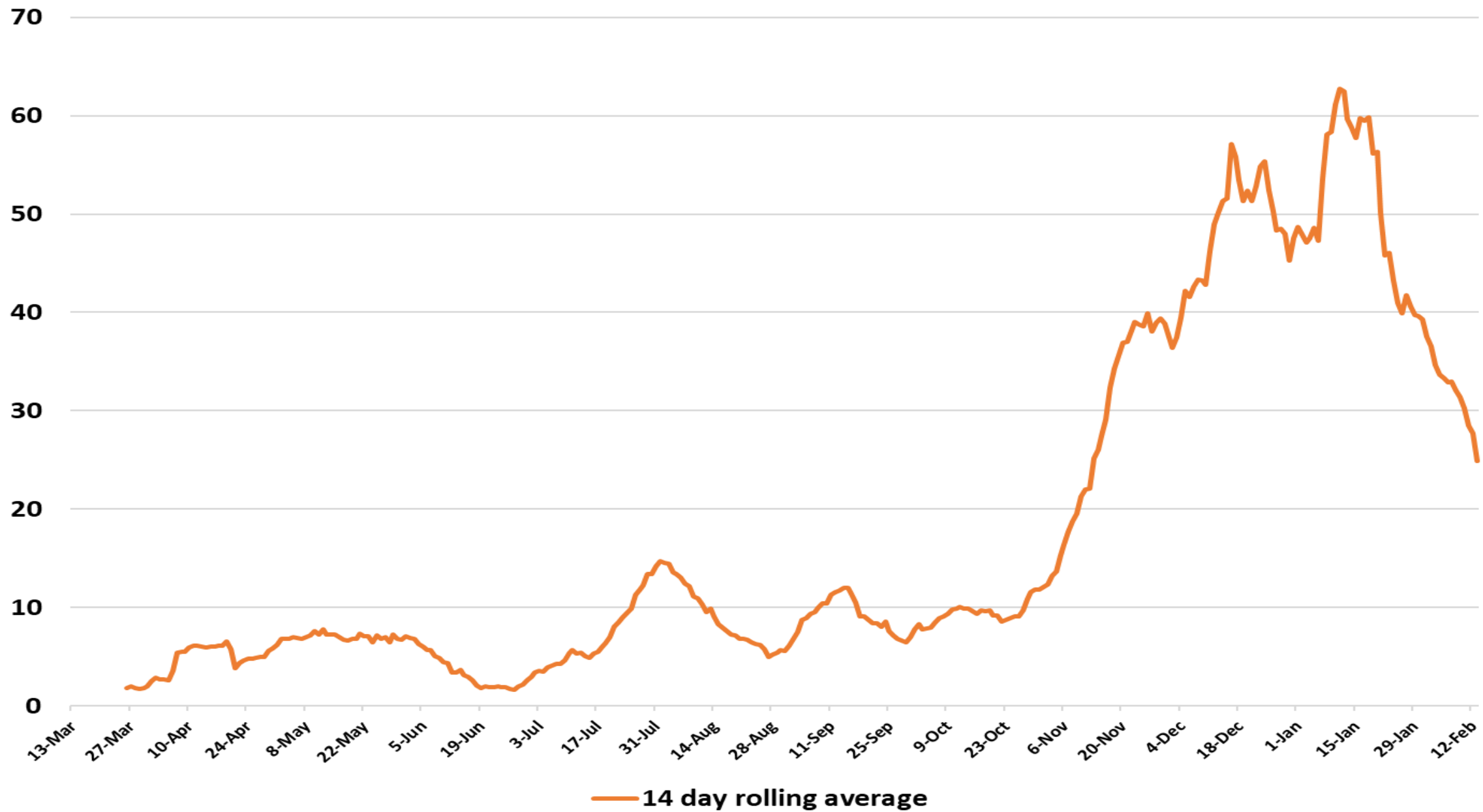
Confirmed Probable



Probable cases

- Probable cases are those who test positive with an antigen test, not a PCR test.
- Probable cases are not included in our confirmed case totals (PCR test only).
- Cases that are confirmed with PCR tests are removed from the probable totals.

14-Day Rolling Average of New Community COVID-19 Cases by Report Date



Carroll County
Health Department

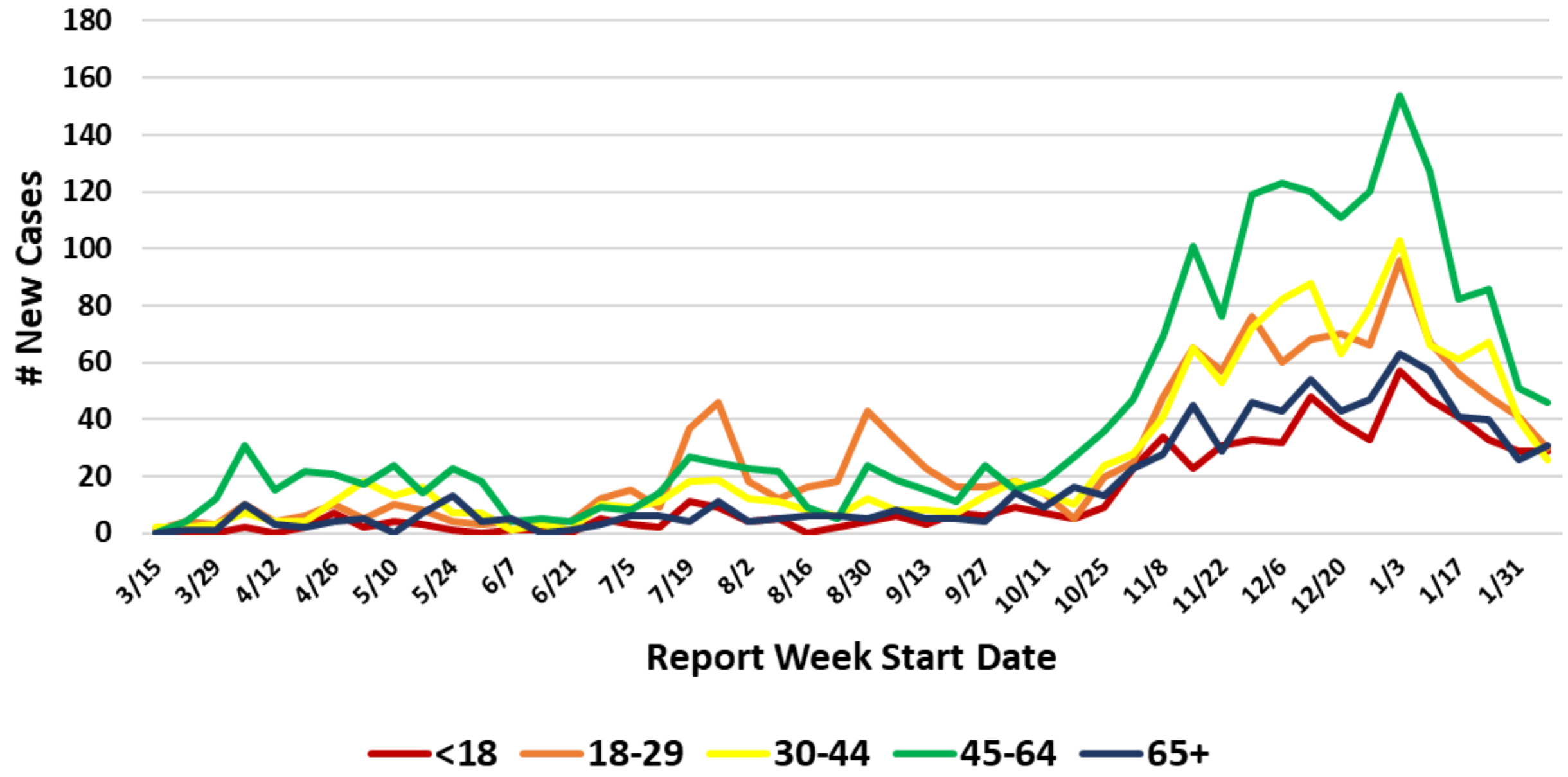


Public Health
Prevent. Promote. Protect.

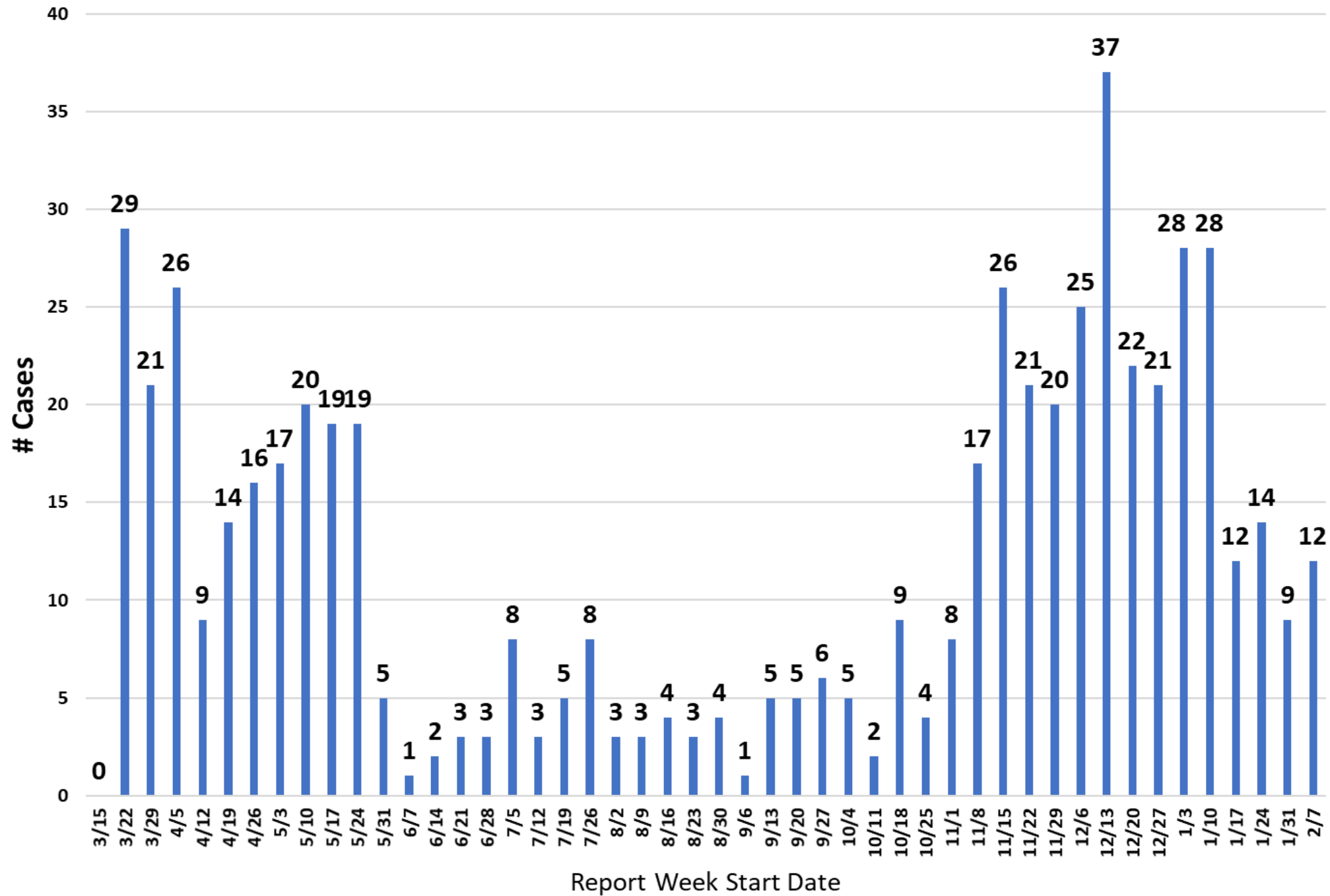
Please note: community cases only



COVID Cases: Age Groups by Report Week



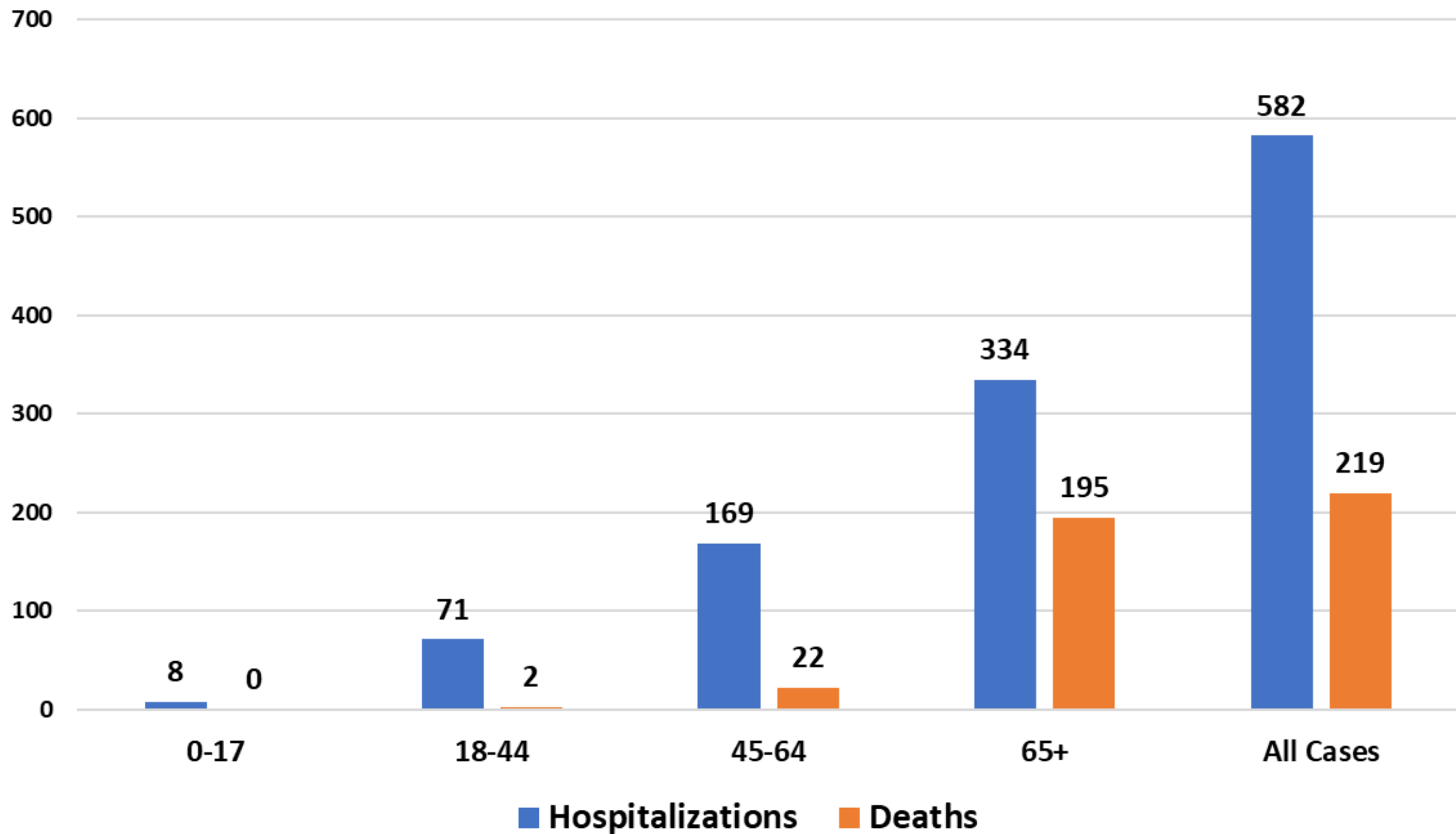
Hospitalizations by Report Week: All COVID-19 Cases



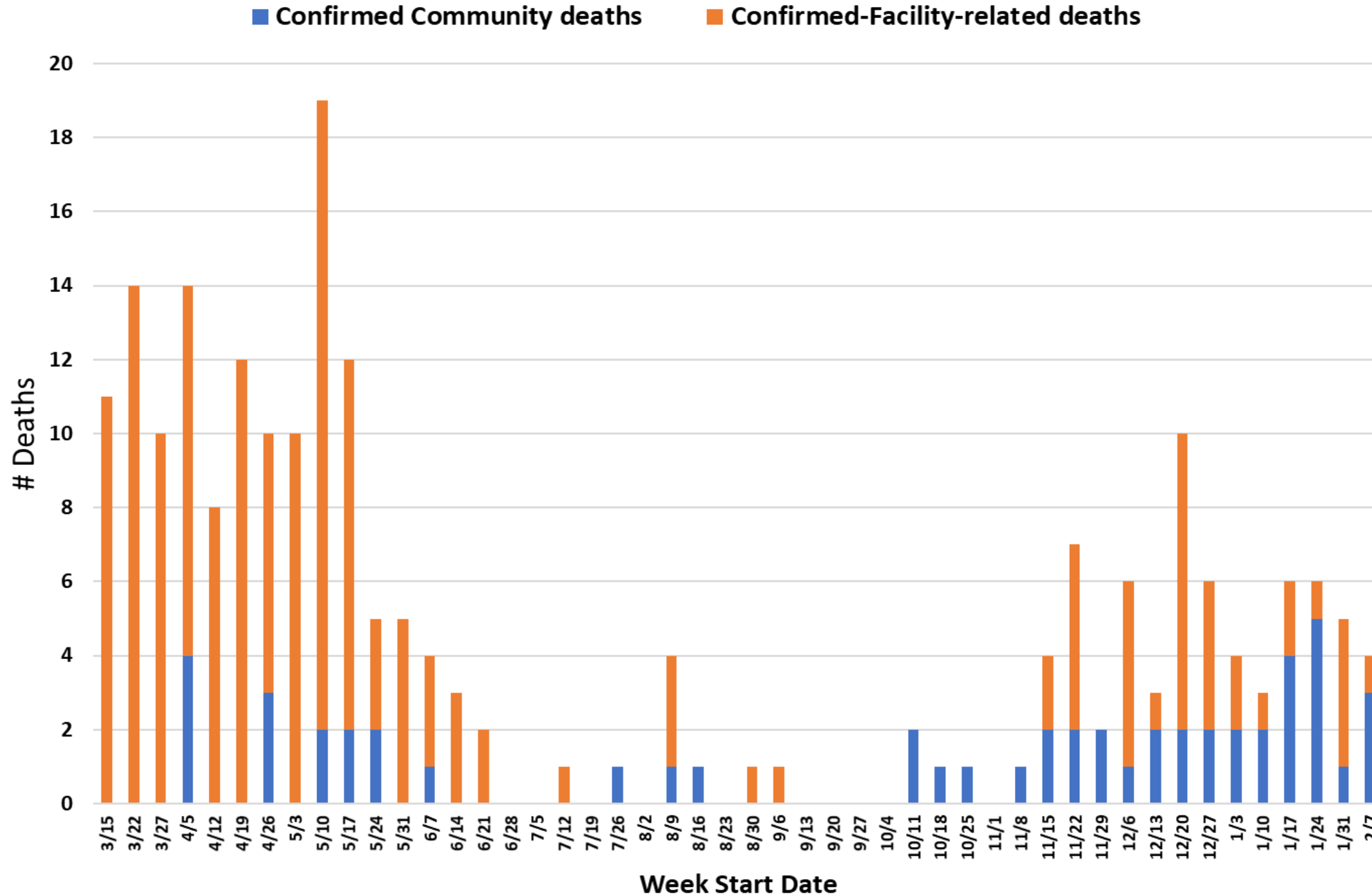
This graph shows hospitalizations by week for COVID positive Carroll County residents, in any hospital.

- Report week is the week their case was reported, which may not be the same week they were hospitalized. Only one hospitalization is noted per person.
- There is a slight data lag so recent numbers may increase.
- Additional hospital data can be found on our website: <https://cchd.maryland.gov/carroll-county-md-cases/>

Hospitalizations and Deaths by Age Group (years): All COVID-19 Cases

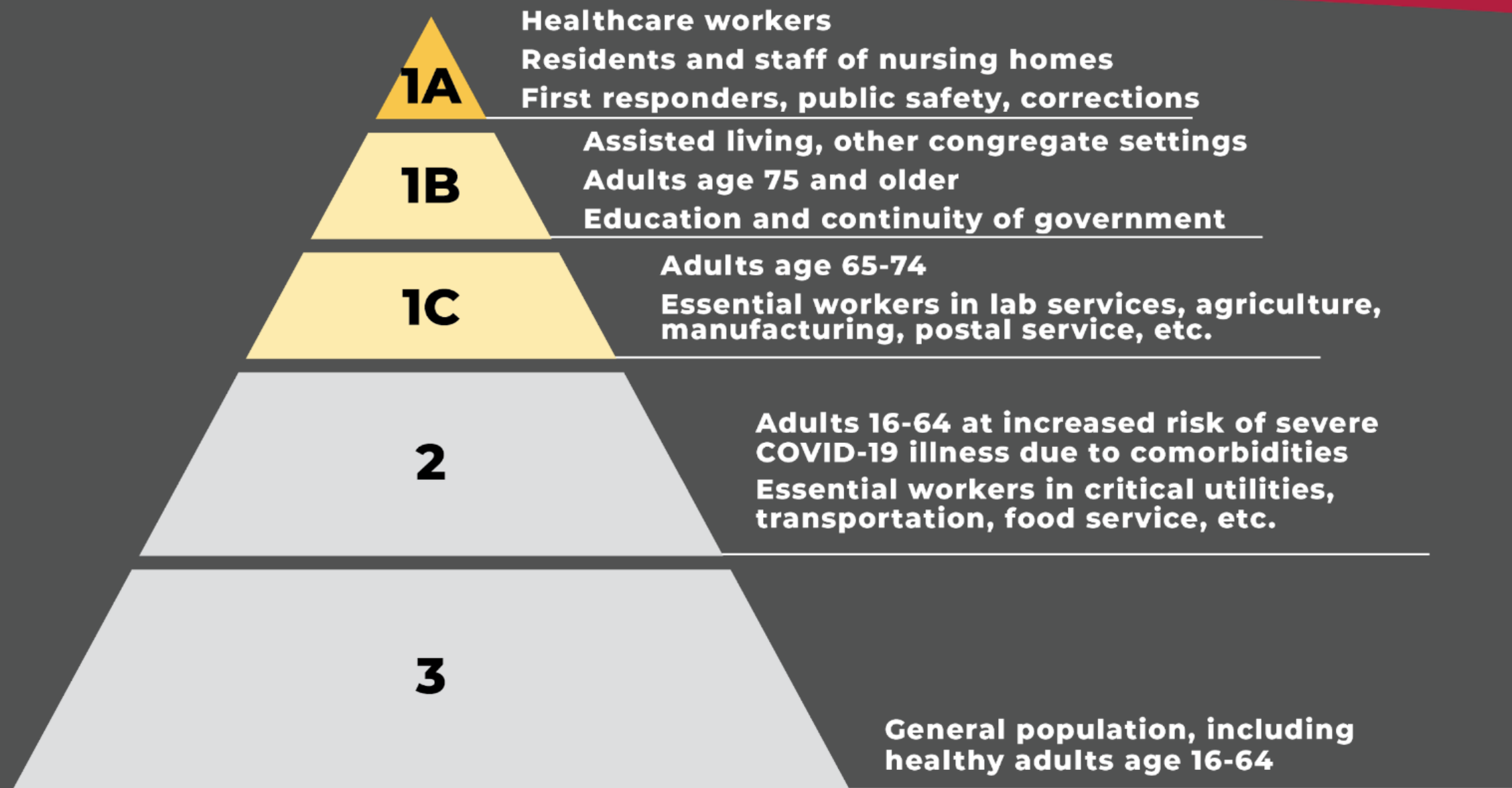


COVID-19 Deaths by Week of Death



Please note:

- This data does not include deaths in probable cases.



Week of January 31st: Continuing Phase 1B

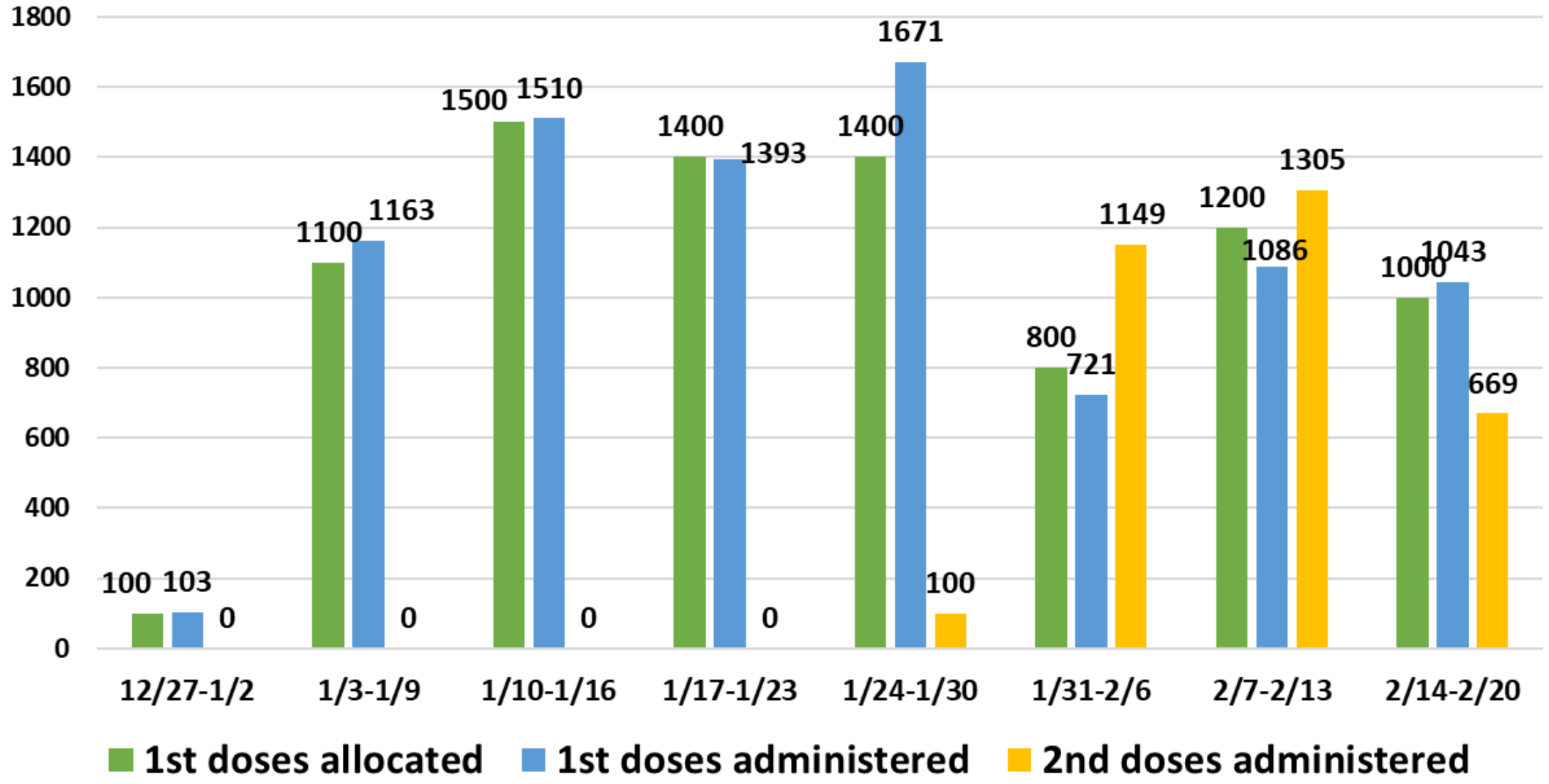
Phase 1A

Continuing to work to complete most 1st doses in this group.

Phase 1B includes:

- Assisted living and group homes and other congregate facilities
- Adults 75 and up
- Education and childcare
- People critical for continuity of government
- Higher education

Carroll County Health Department COVID-19 Vaccinations



**Carroll Hospital:
1st Doses: 2,771
2nd Doses: 1,952**

***This does not include long-term care facilities (vaccinated by CVS/Walgreens).**

Total 1st doses CCHD: 8,690

Total 2nd doses: 3,223

Please note: Week of 2/14-2/20 is in progress; doses administered will increase.

Estimated Carroll populations by COVID-19 Vaccine Priority Group

		Estimated # Residents*	Notes
Phase 1a:	Healthcare Workers/Staff	11,343	2,627 vaccinated by CCHD
	NH Residents/Staff	>476	Pharmacies will vaccinate
	First responders, public safety, corrections	4,398	Firefighters not included in population numbers; 583 vaccinated by CCHD
Phase 1b:	Assisted Living, other congregate settings	1,058	Pharmacies will vaccinate
	Adults 75+	11,348	Estimated 5,135 vaccinated (2,847 by CCHD)
	Education and continuity of government	7,606	5,500 CCPS, 300 private schools, 736 for daycares; Continuity of government: 50; Higher Education: 750; (3,969 vaccinated by CCHD)
Phase 1c:	Adults 65-74	16,734	Estimated 2,169 vaccinated (548 vaccinated by CCHD)
	Essential workers: lab services, agriculture, manufacturing, postal service	6,311	68 vaccinated by CCHD
Phase 2:	Adults 16-64 at increased risk due to comorbidities	65,000	
	Essential workers: critical utilities, transportation, food services	3,941	
Phase 3:	General population, including healthy adults age 16-64		

*Residents may belong to multiple groups

CCHD: 6,486 first doses, 1,940 final doses

Carroll County Population Vaccinated: 19,736

Carroll Hospital: 1,823 first doses, 1,209 final doses

Sources: Crisp Reporting Services (MDH ImmuNet data), preliminary data through 2/16/2021, MDH PrepMod

Our vaccine supply is extremely limited and vaccine may soon be available at other sites. Visit our website for more information.

Current COVID-19 Vaccination Information and Updates

<https://cchd.maryland.gov/covid-19-vaccination/>



Questions?

**Carroll County
Health Department**



Public Health
Prevent. Promote. Protect.