

Carroll County Board of Commissioners

COVID-19 Data Update February 11, 2021

**Maggie Kunz, MPH
Carroll County Health Officer**

*Please note that this data is preliminary and subject to change.

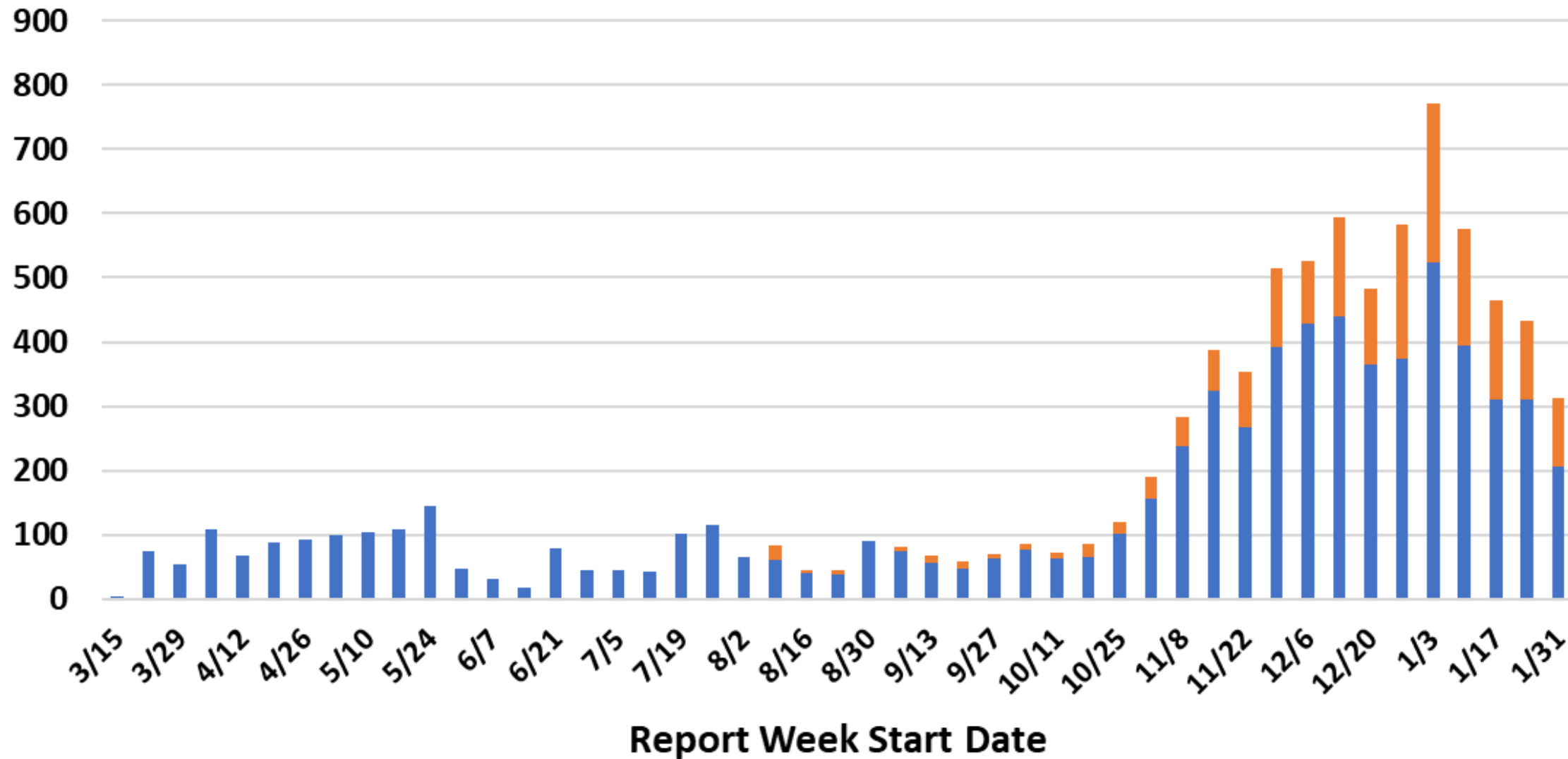
**Carroll County
Health Department**



Public Health
Prevent. Promote. Protect.

All COVID-19 Cases by Report Week

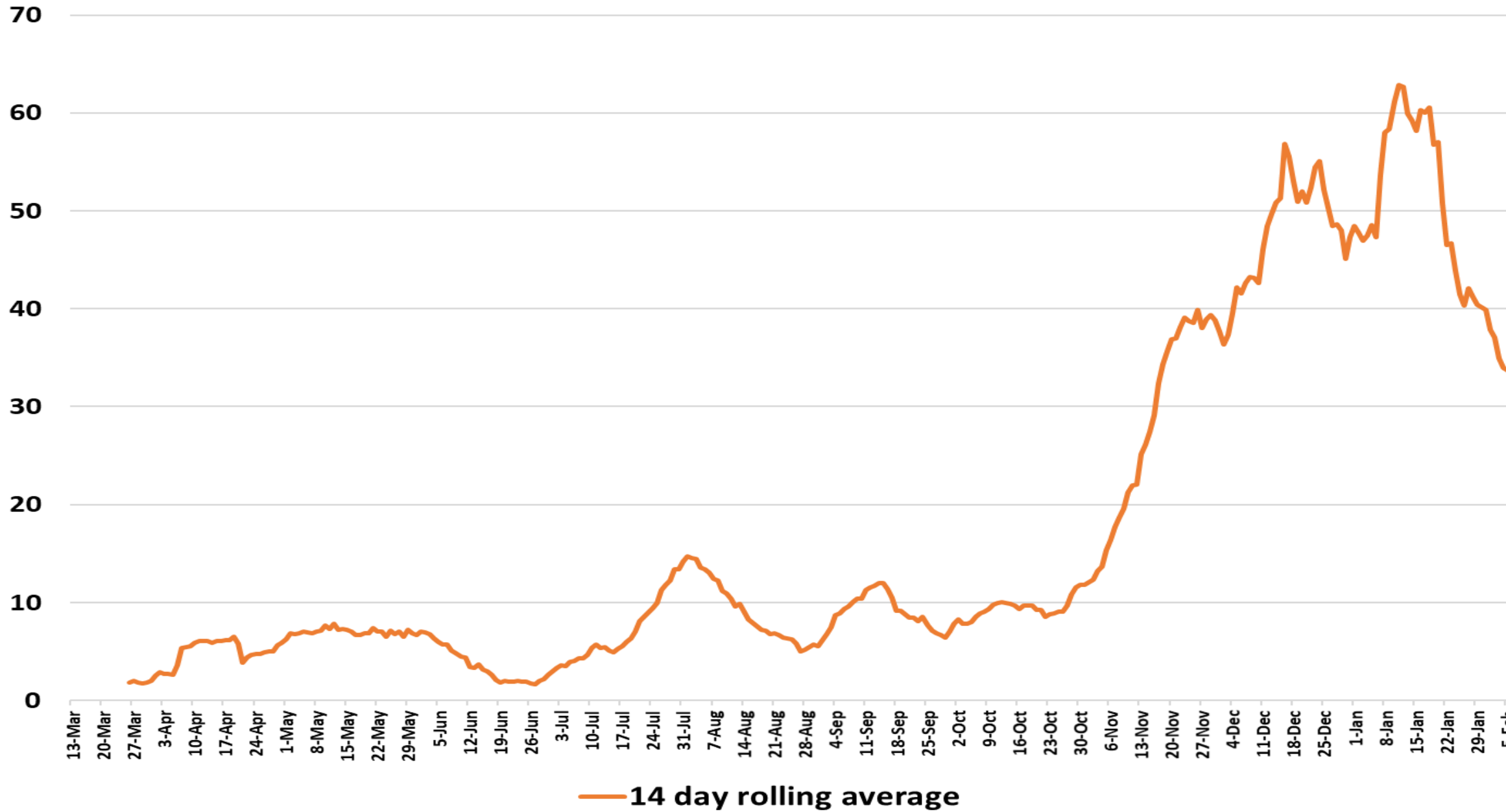
Confirmed Probable



Probable cases

- Probable cases are those who test positive with an antigen test, not a PCR test.
- Probable cases are not included in our confirmed case totals (PCR test only).
- Cases that are confirmed with PCR tests are removed from the probable totals.

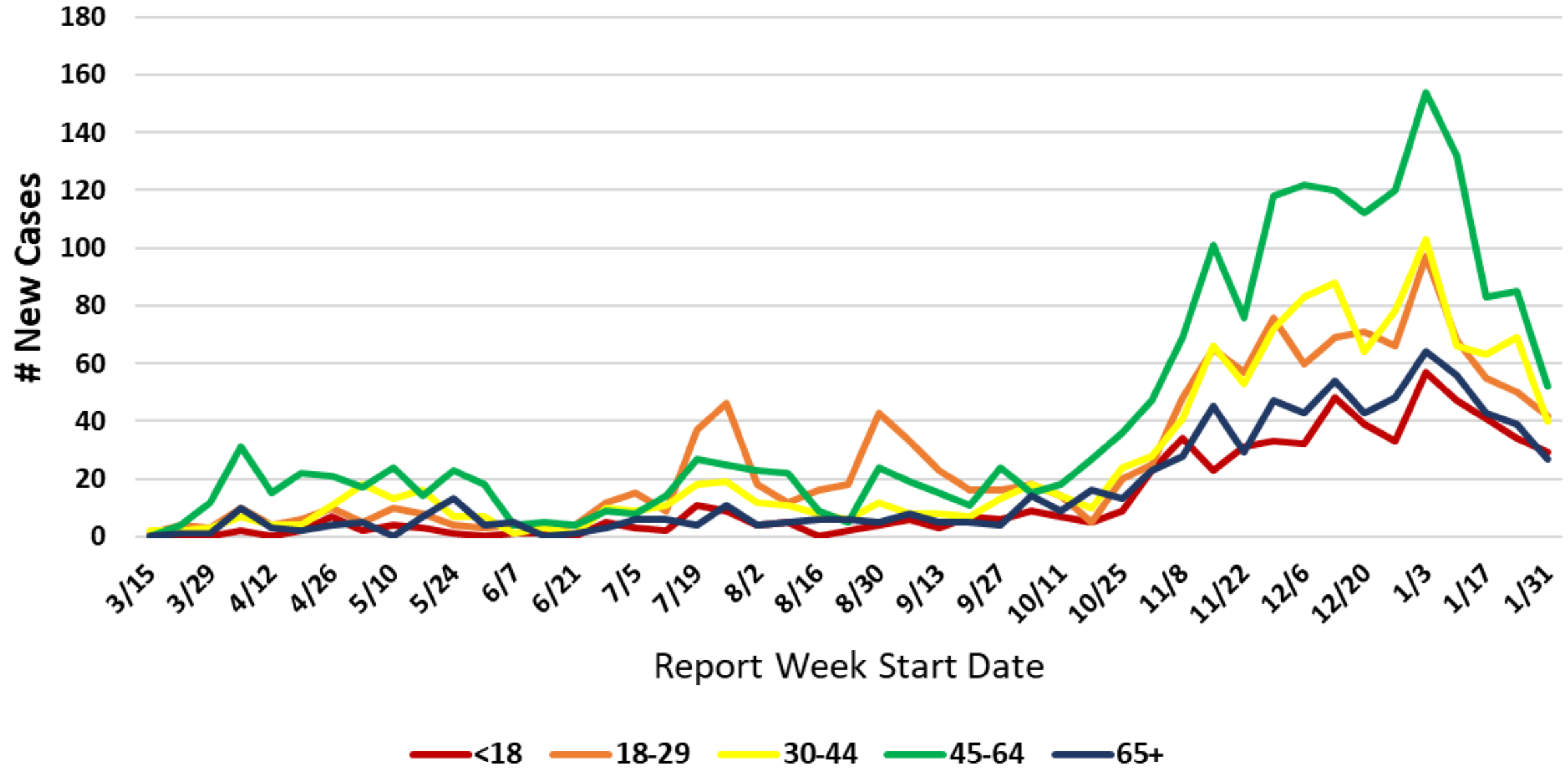
14-Day Rolling Average of New Community COVID-19 Cases by Report Date



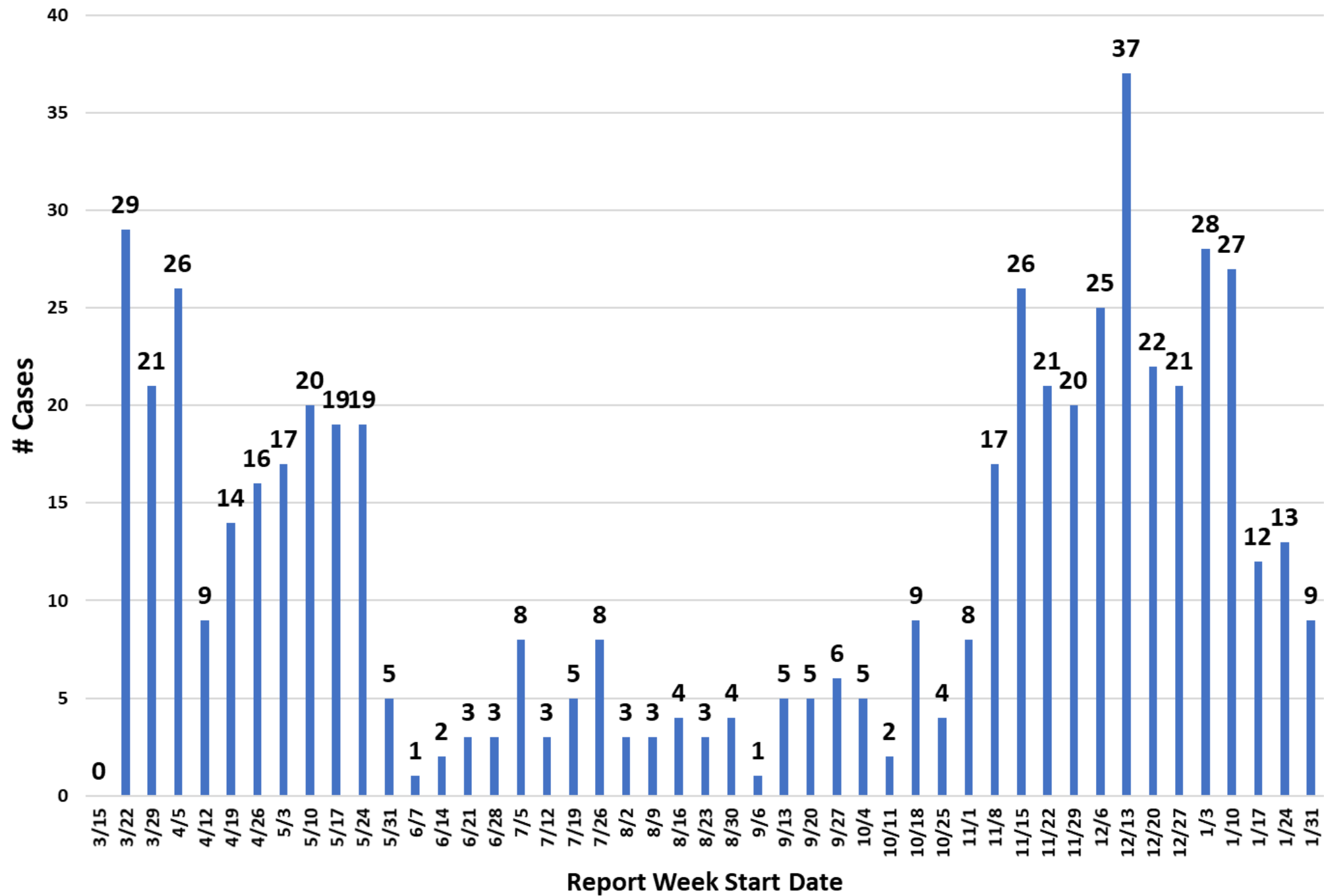
Please note: community cases only



COVID Cases: Age Groups by Report Week



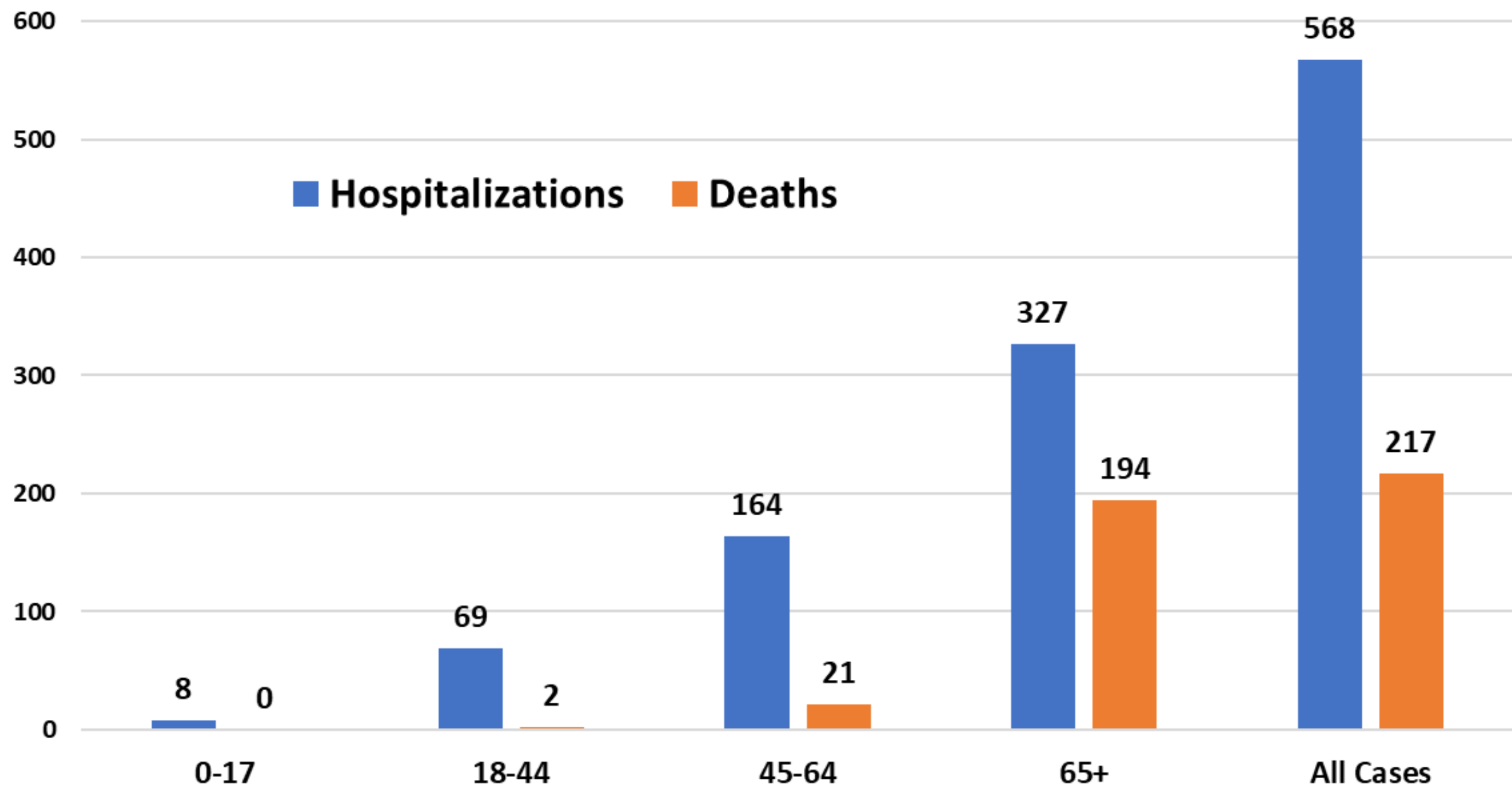
Hospitalizations by Report Week: All COVID-19 Cases



This graph shows hospitalizations by week for COVID positive Carroll County residents, in any hospital.

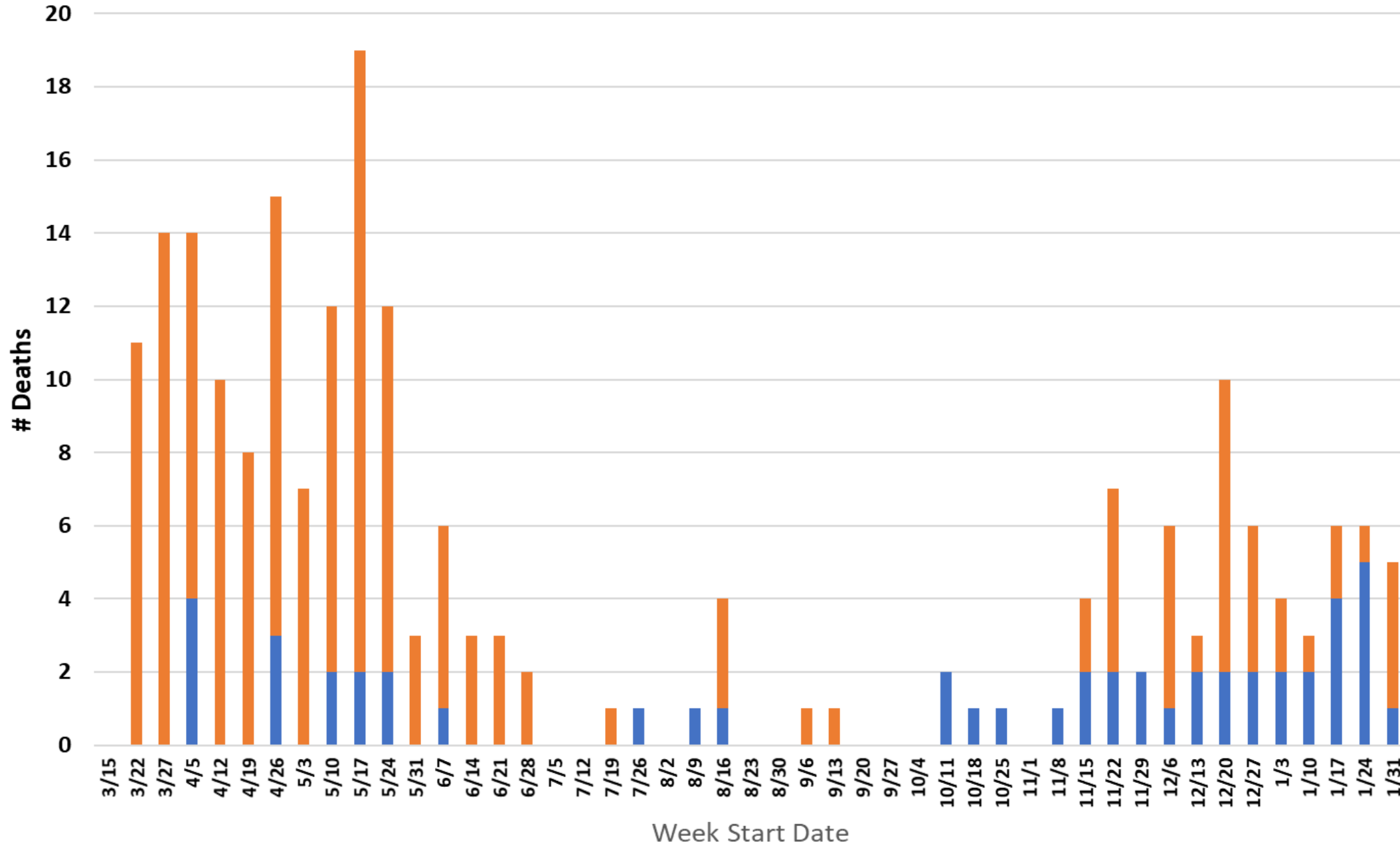
- Report week is the week their case was reported, which may not be the same week they were hospitalized. Only one hospitalization is noted per person.
- There is a slight data lag so recent numbers may increase.
- Additional hospital data can be found on our website:
<https://cchd.maryland.gov/carroll-county-md-cases/>

Hospitalizations and Deaths by Age Group (years): All COVID-19 Cases



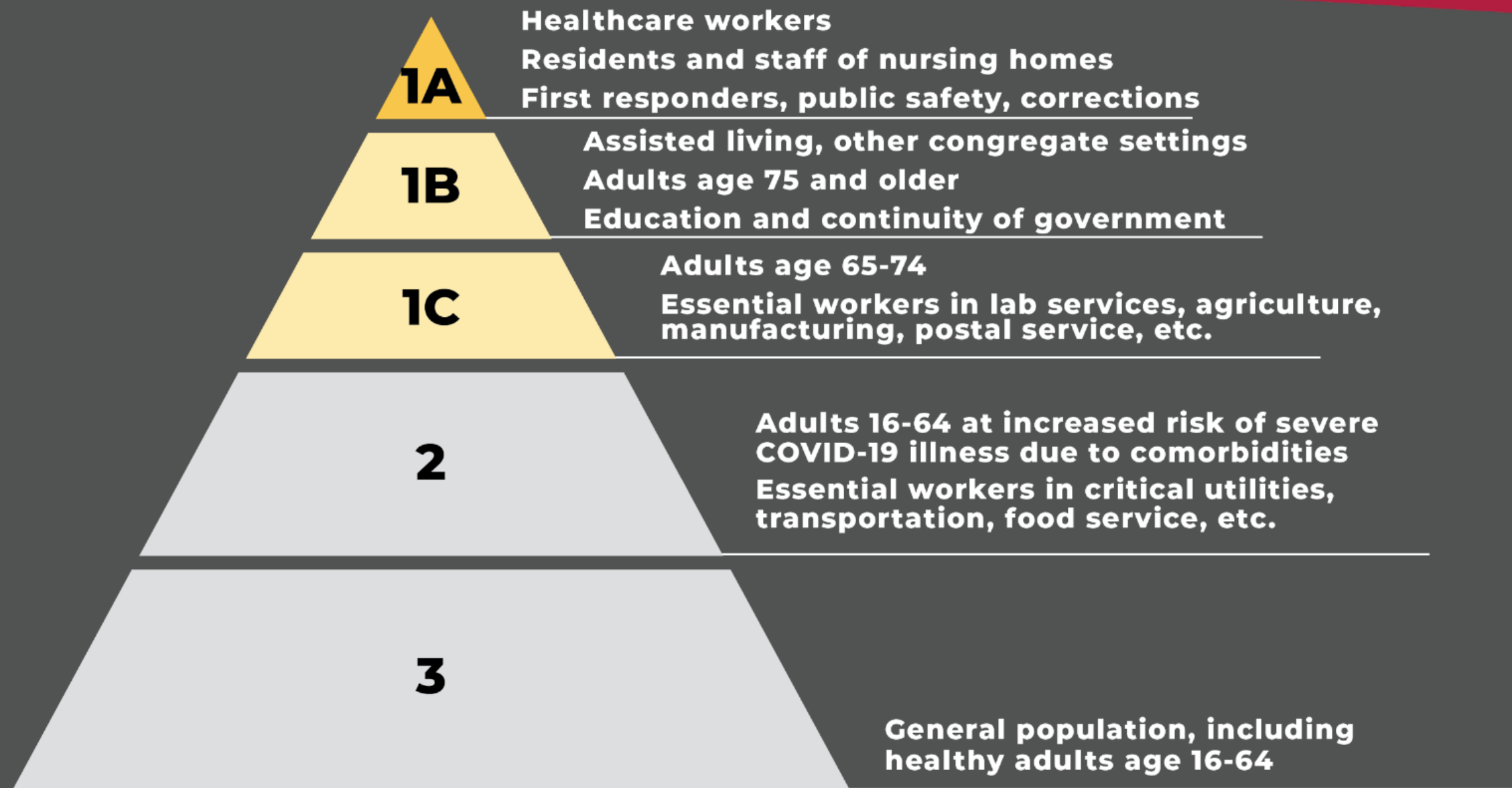
COVID-19 Deaths by Week of Death

■ Confirmed Community deaths ■ Confirmed Facility-related deaths



Please note:

- This data does not include deaths in probable cases.



Week of January 31st: Continuing Phase 1B

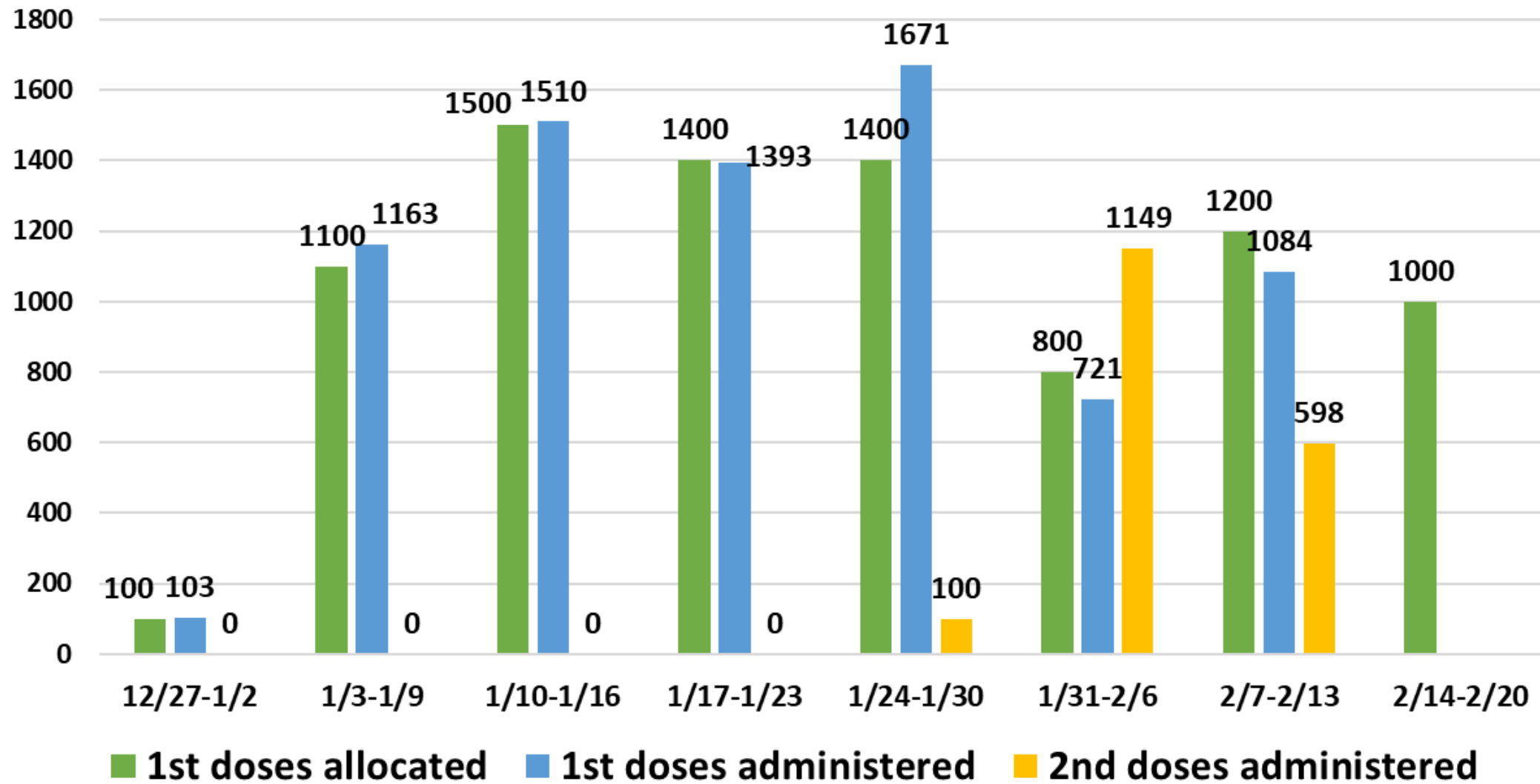
Phase 1A

Working to complete most 1st doses in this group next week.

Phase 1B includes

- Assisted living and group homes and other congregate facilities
- Adults 75 and up
- Education and childcare (Higher Education Added)
- People critical for continuity of government

Carroll County Health Department COVID-19 Vaccinations



**Carroll Hospital:
1st Doses: 2,751
2nd Doses: 1,527**

***This does not include long-term care facilities (vaccinated by CVS/Walgreens).**

Total 1st doses CCHD: 7,645

Please note: Week of 2/7-2/13 is in progress; doses administered will increase.

Estimated Carroll populations by COVID-19 Vaccine Priority Group

		Estimated # Residents*	Notes
Phase 1a:	Healthcare Workers/Staff	11,343	2,627 Vaccinated by CCHD
	NH Residents/Staff	>476	Pharmacies will vaccinate
	First responders, public safety, corrections	4,398	Firefighters not included in population numbers; 569 vaccinated by CCHD
Phase 1b:	Assisted Living, other congregate settings	1,058	Pharmacies will vaccinate
	Adults 75+	11,348	Estimated 3,952 vaccinated (2,015 by CCHD)
	Education and continuity of government	7,606	5,500 CCPS, 300 private schools, 736 for daycares; Continuity of government: 50; Higher Education 750; - Total vaccinated between CCHD and CCPS (3,682 by CCHD)
Phase 1c:	Adults 65-74	16,734	Estimated 1,645 vaccinated (512 vaccinated by CCHD)
	Essential workers: lab services, agriculture, manufacturing, postal service	6,311	68 vaccinated by CCHD
Phase 2:	Adults 16-64 at increased risk due to comorbidities	65,000	
	Essential workers: critical utilities, transportation, food services	3,941	
Phase 3:	General population, including healthy adults age 16-64		

*Residents may belong to multiple groups

CCHD: 5,766 first doses, 898 final doses

Carroll County Population Vaccinated: 17,260

Carroll Hospital: 1,805 first doses, 915 final doses

Our vaccine supply is extremely limited and vaccine may soon be available at other sites. Visit our website for more information.

Current COVID-19 Vaccination Information and Updates

<https://cchd.maryland.gov/covid-19-vaccination/>



Questions?

**Carroll County
Health Department**



Public Health
Prevent. Promote. Protect.