

# **Carroll County Board of Commissioners**

## **COVID-19 Data Update January 28, 2021**

**Ed Singer, LEHS  
Carroll County Health Officer**

\*Please note that this data is preliminary and subject to change.

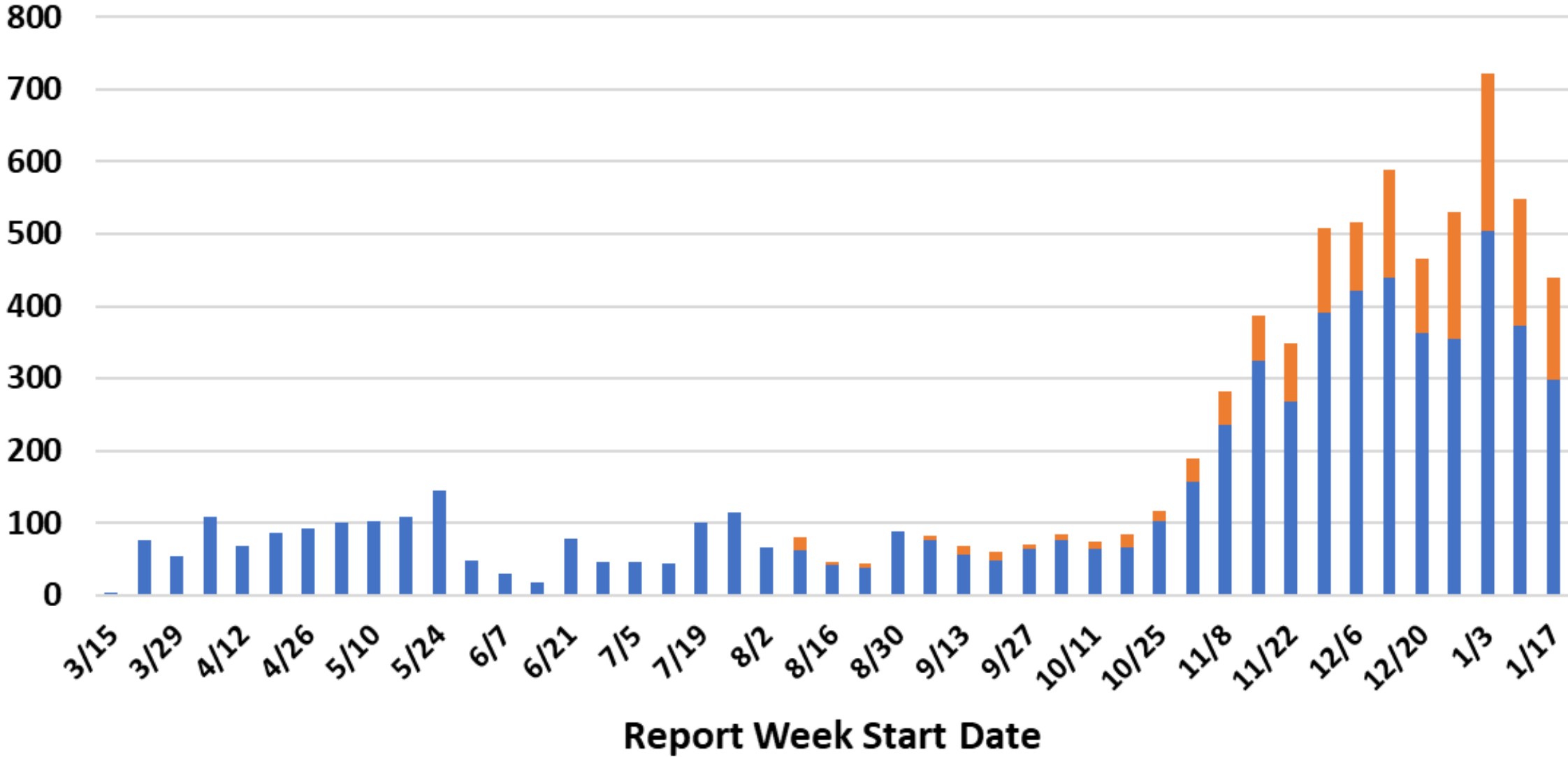
**Carroll County  
Health Department**



**Public Health**  
Prevent. Promote. Protect.

# All COVID-19 Cases by Report Week

Confirmed Probable

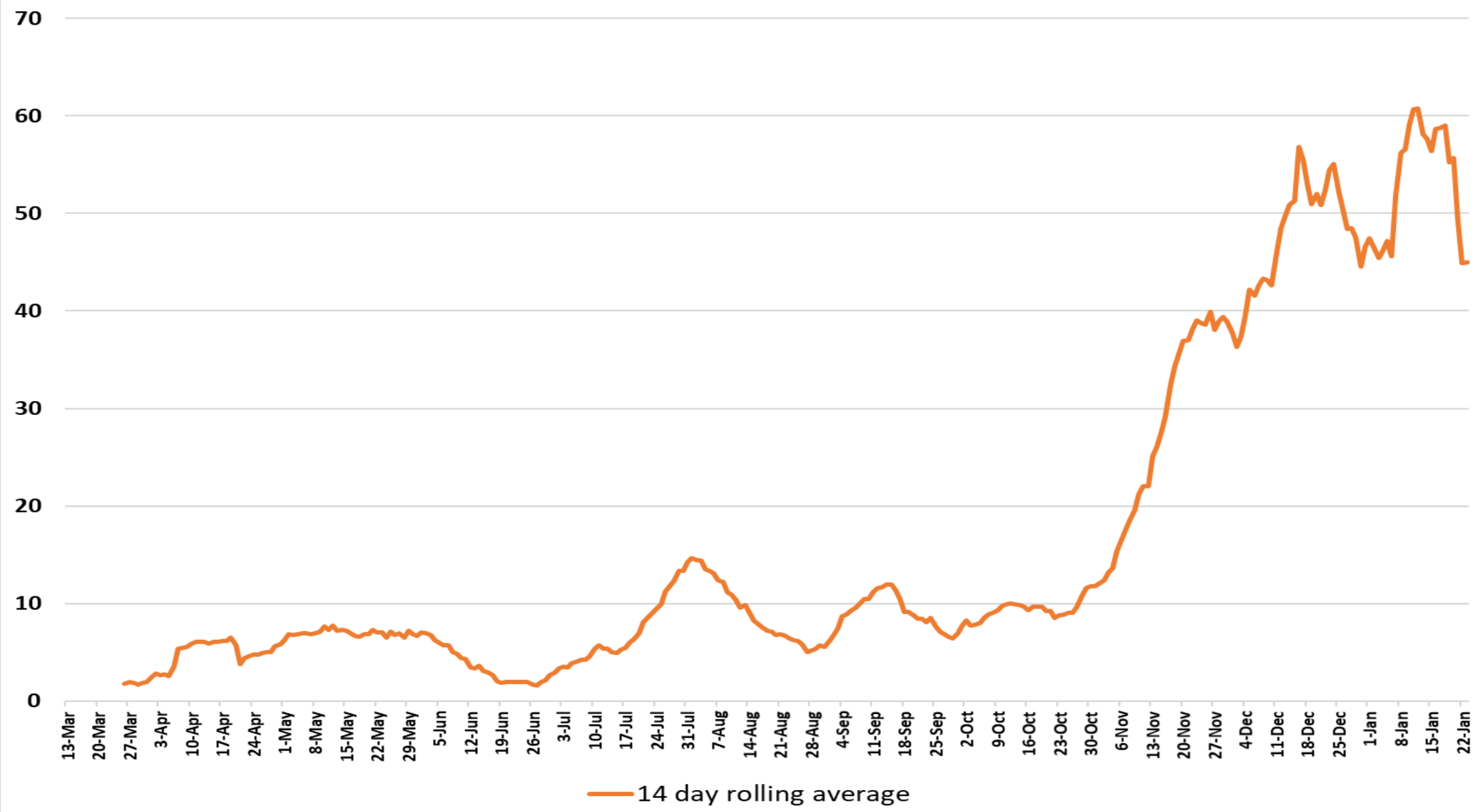


## Probable cases

- Probable cases are those who test positive with an antigen test, not a PCR test.
- Probable cases are not included in our confirmed case totals (PCR test only).
- Cases that are confirmed with PCR tests are removed from the probable totals.



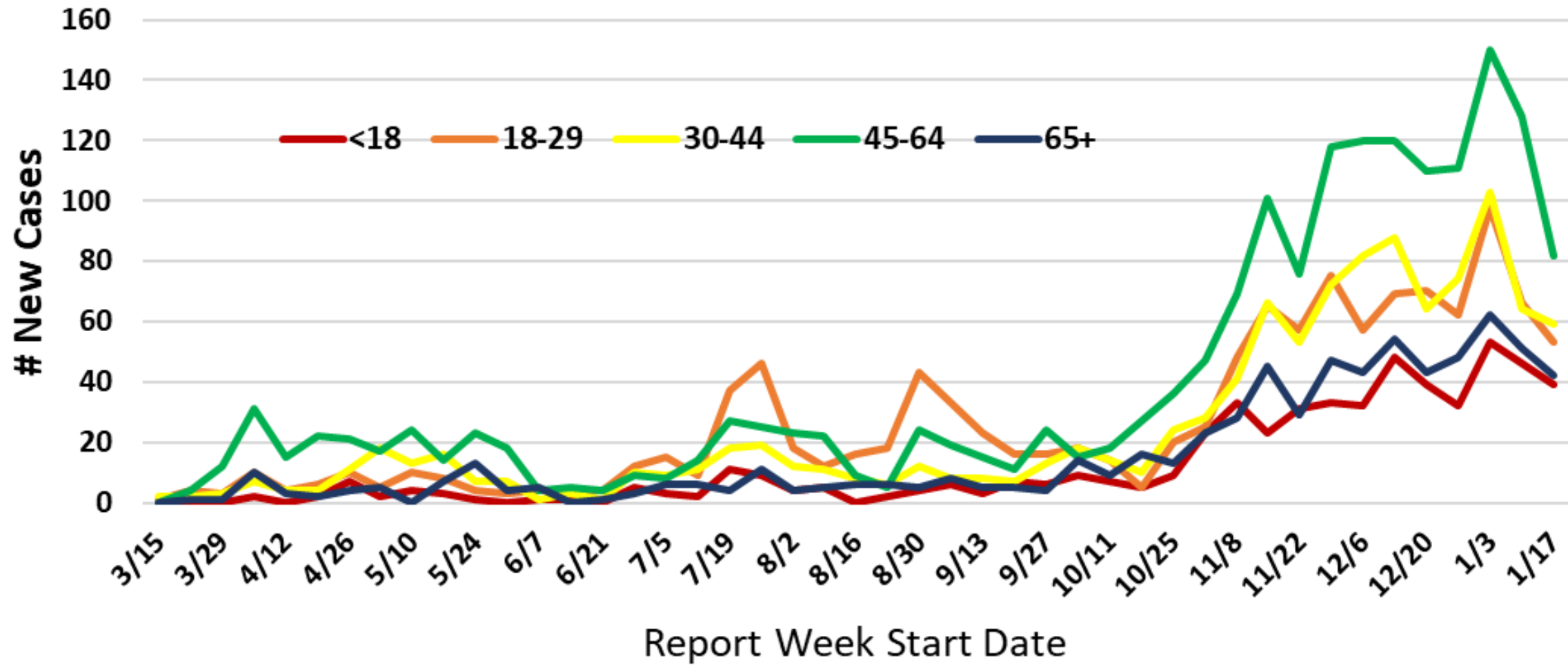
### 14-Day Rolling Average of New Community COVID-19 Cases by Report Date



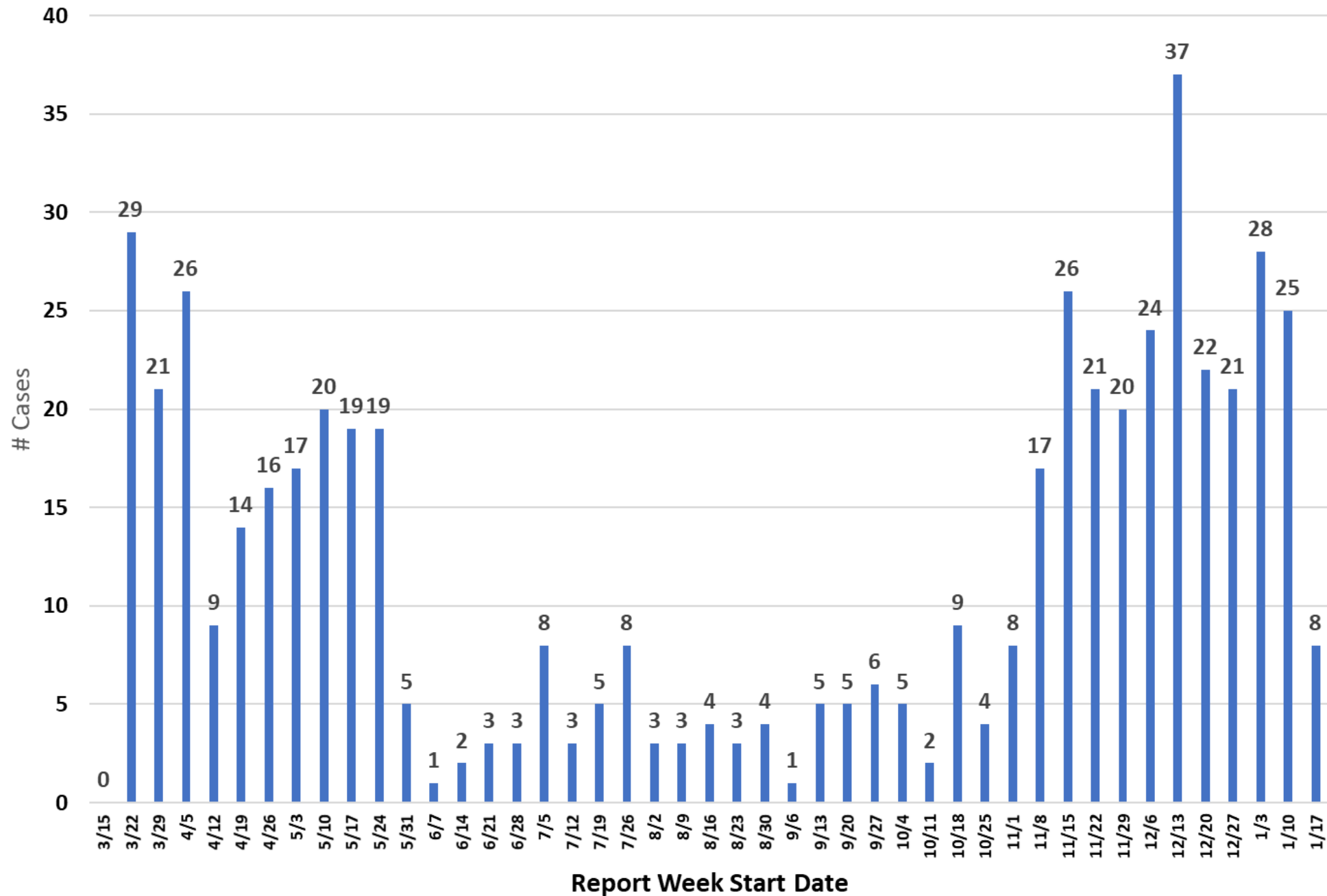
Please note: community cases only



## COVID Cases: Age Groups by Report Week



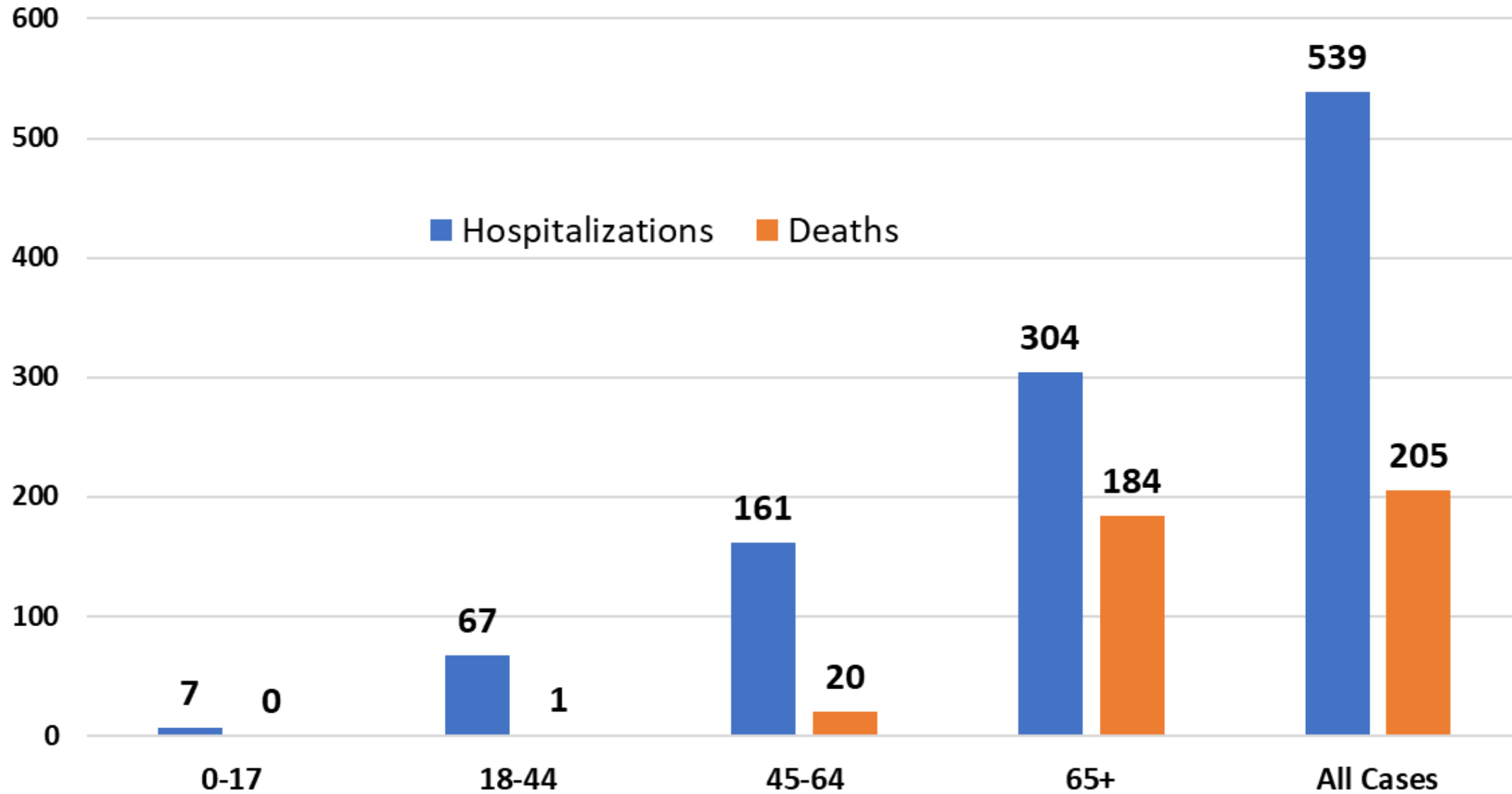
## Hospitalizations by Report Week: All COVID-19 Cases



This graph shows hospitalizations by week for COVID positive Carroll County residents, in any hospital.

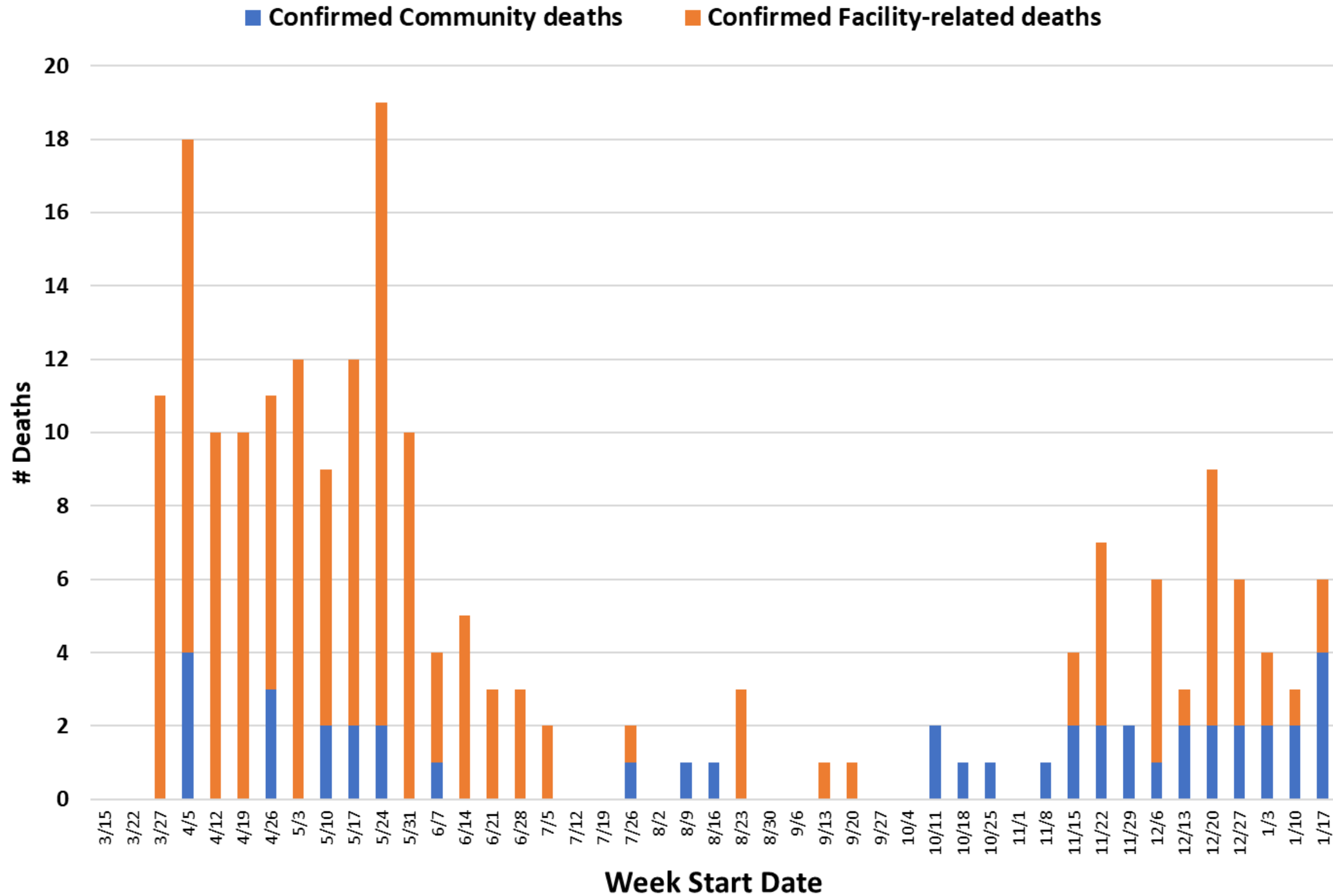
- Report week is the week their case was reported, which may not be the same week they were hospitalized. Only one hospitalization is noted per person.
- There is a slight data lag so recent numbers may increase.
- Additional hospital data can be found on our website: <https://cchd.maryland.gov/carroll-county-md-cases/>

### Hospitalizations and Deaths by Age Group (years): All COVID-19 Cases

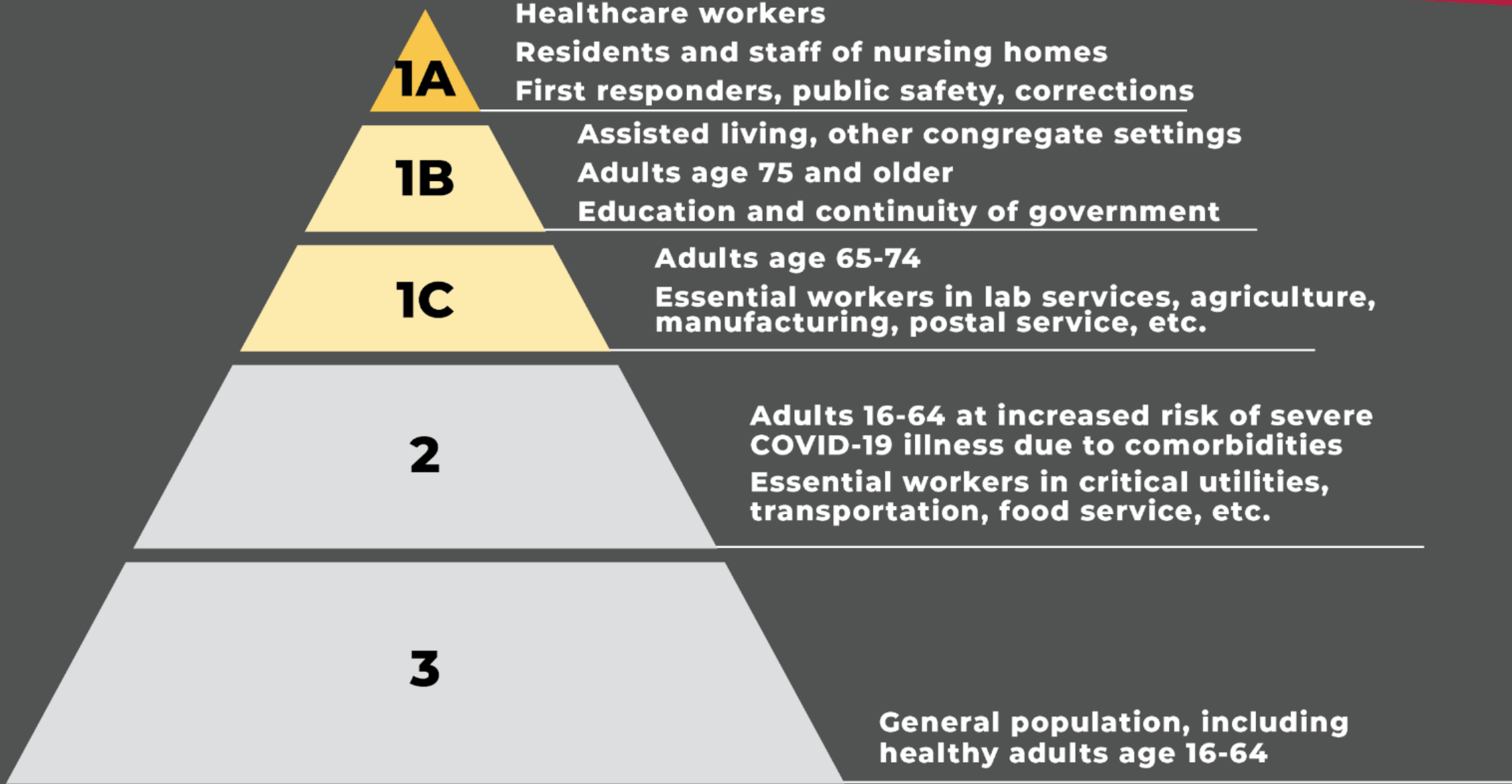


Please note:  
This chart reflects the number of Carroll residents who have been hospitalized at any time and in any hospital for COVID-19.

## COVID-19 Deaths by Week of Death



- Please note:
- We had 4 community deaths last week, the most since April.
  - This data does not include deaths in probable cases.





# Vaccination totals:

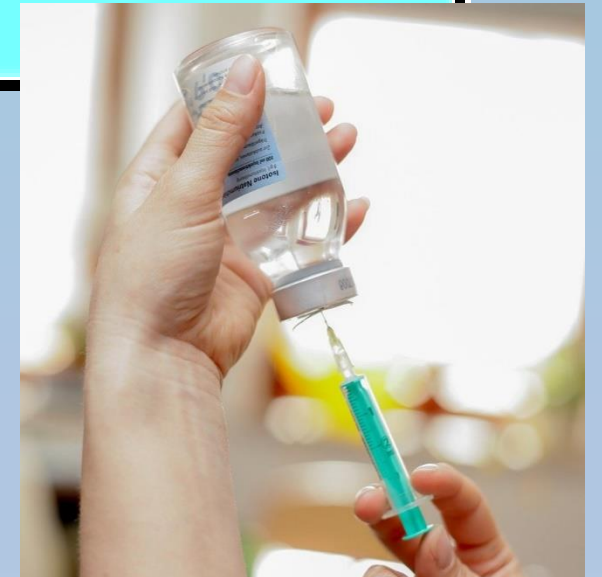
Week	Doses received	Doses administered*
12/27	100	103
1/3	1,100	1,163
1/10	1,500	1,510
1/17	1,400	1,393
1/24	1,400	<b>736 so far this week</b>
1/31	800	

**Total vaccinated with first dose: 4,169**

Carroll Hospital:

1st Doses: 2,384

2nd Doses 577



\*This does not include long-term care facilities (vaccinated by CVS/Walgreens).

**Estimated Carroll populations by COVID-19 Vaccine Priority Group**

		Estimated # Residents*	Notes
Phase 1a:	Healthcare Workers/Staff	11,343	2,627 Vaccinated by CCHD
	NH Residents/Staff	>476	Pharmacies will vaccinate
	First responders, public safety, corrections	4,398	Firefighters not included in numbers
Phase 1b:	Assisted Living, other congregate settings	1,058	Pharmacies will vaccinate
	Adults 75+	11,348	520 (vaccinated yesterday CCHD), 71 Vaccinated previously CCHD
	Education and continuity of government	6,586	5,500 CCPS, 300 private schools, 736 for daycares; Continuity of government: 50 - 216 ED Vaccinated yesterday, total vaccinated between CCHD and CCPS 2,104
Phase 1c:	Adults 65-74	16,734	
	agriculture, manufacturing, postal service	6,311	
Phase 2:	Adults 16-64 at increased risk due to comorbidities	65,000	
	Essential workers: critical utilities, transportation, food services	3,941	
Phase 3:	General population, including healthy adults age 16-64		

\*Residents may belong to multiple groups

CCHD - 4905 First Doses, 102 Second Doses

**Total Carroll County Residents Vaccinated is 14,260**

**Carroll Hospital - 2,384 First Doses, 577 Second Doses**

# Week of January 25<sup>th</sup>: Continuing Phase 1B

## Phase 1A

We continue to vaccinate as doses allow.

## Phase 1B includes

- Assisted living and group homes and other congregate facilities
  - Adults 75 and up
  - Education and childcare
  - People critical for continuity of government
- We began vaccinating people 75+ this week. We continue to vaccinate education and childcare staff.

Our vaccine supply is extremely limited and vaccine may soon be available at other sites. Visit our website for more information.

Current COVID-19 Vaccination Information and Updates

<https://cchd.maryland.gov/covid-19-vaccination/>



# Questions?

**Carroll County  
Health Department**



**Public Health**  
Prevent. Promote. Protect.