

Carroll County Board of Commissioners

COVID-19 Data Update January 21, 2021

**Ed Singer, LEHS
Carroll County Health Officer**

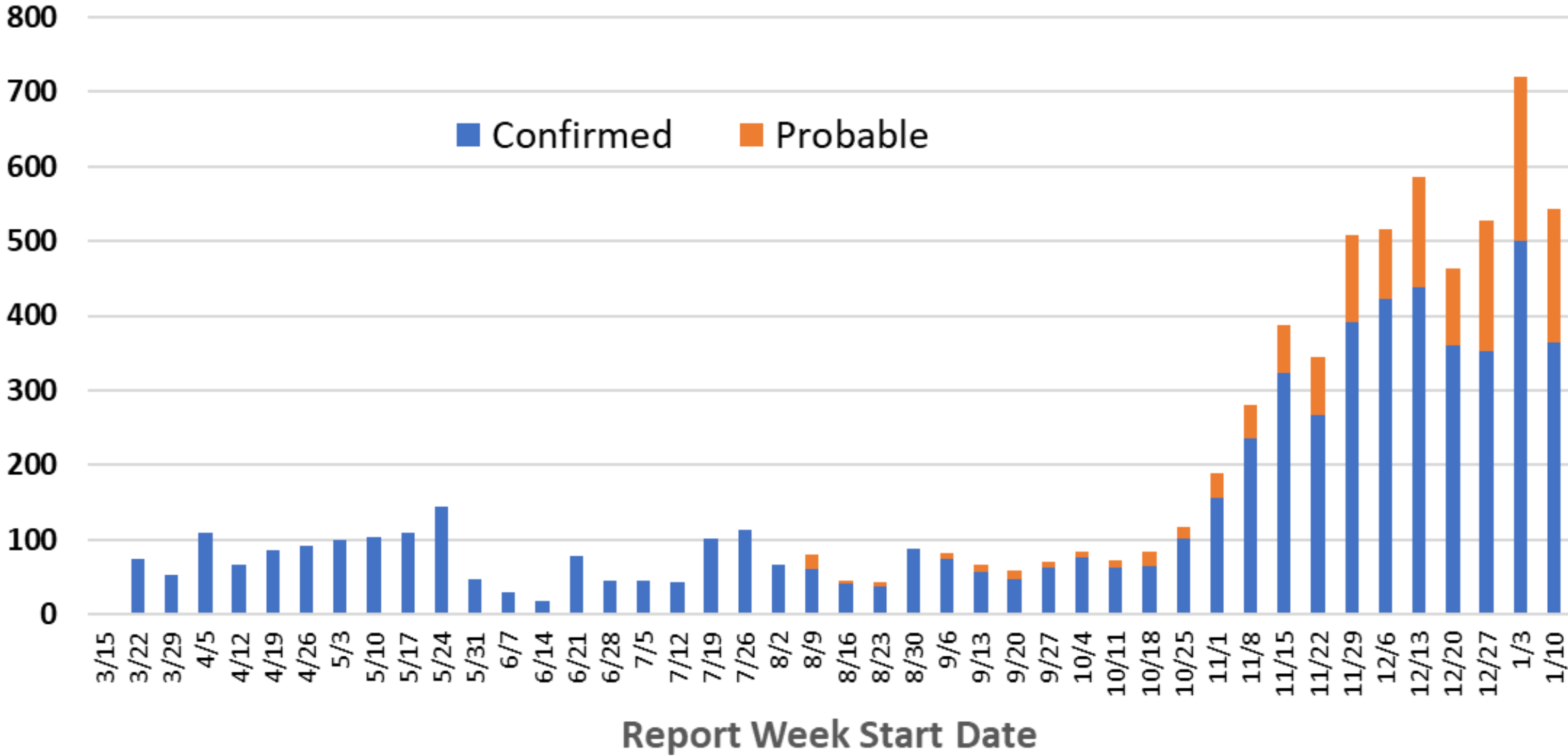
*Please note that this data is preliminary and subject to change.

**Carroll County
Health Department**



Public Health
Prevent. Promote. Protect.

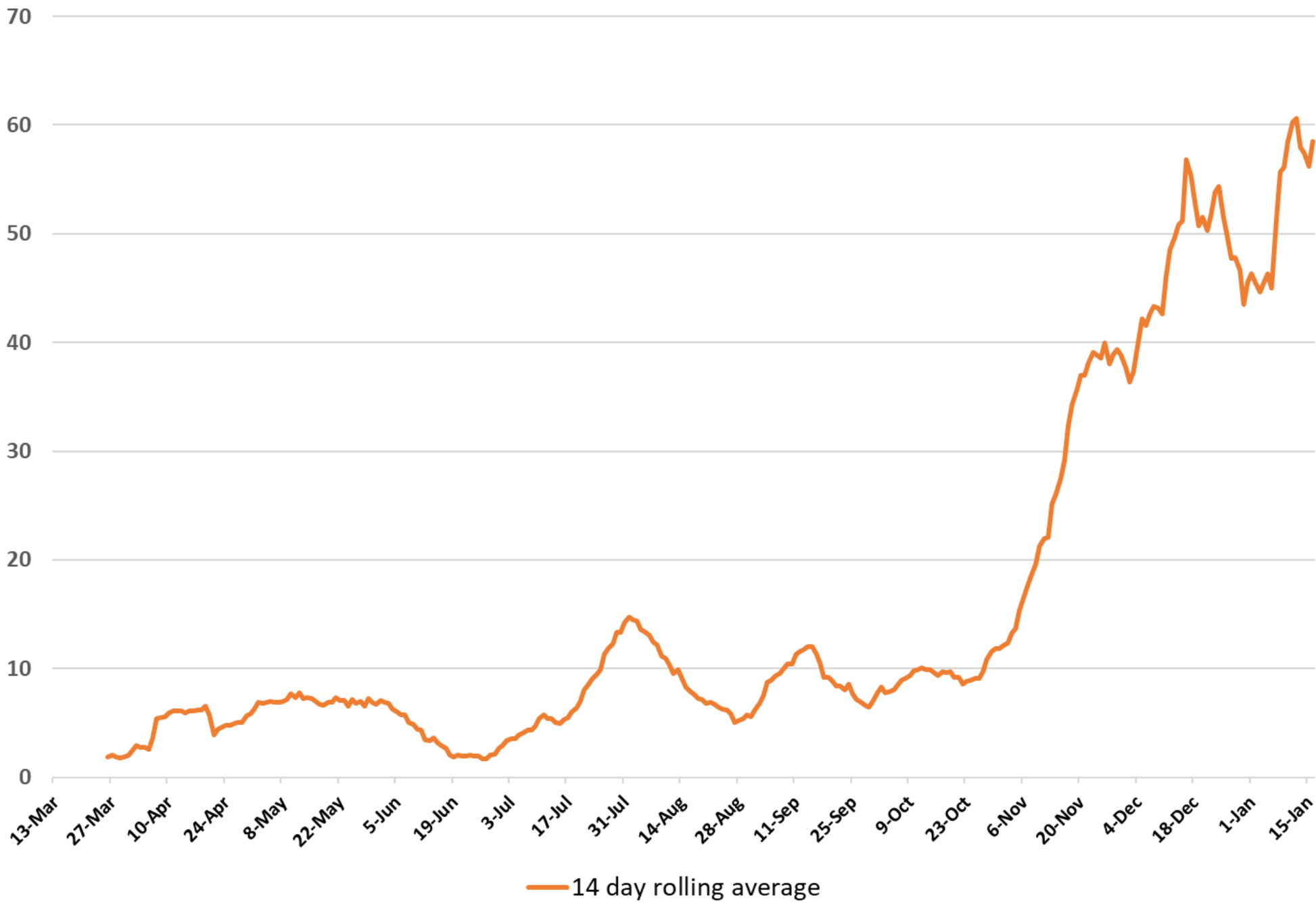
All COVID-19 Cases by Report Week



Probable cases

- Probable cases are those who test positive with an antigen test, not a PCR test.
- Probable cases are not included in our confirmed case totals (PCR test only).
- Cases that are confirmed with PCR tests are removed from the probable totals.

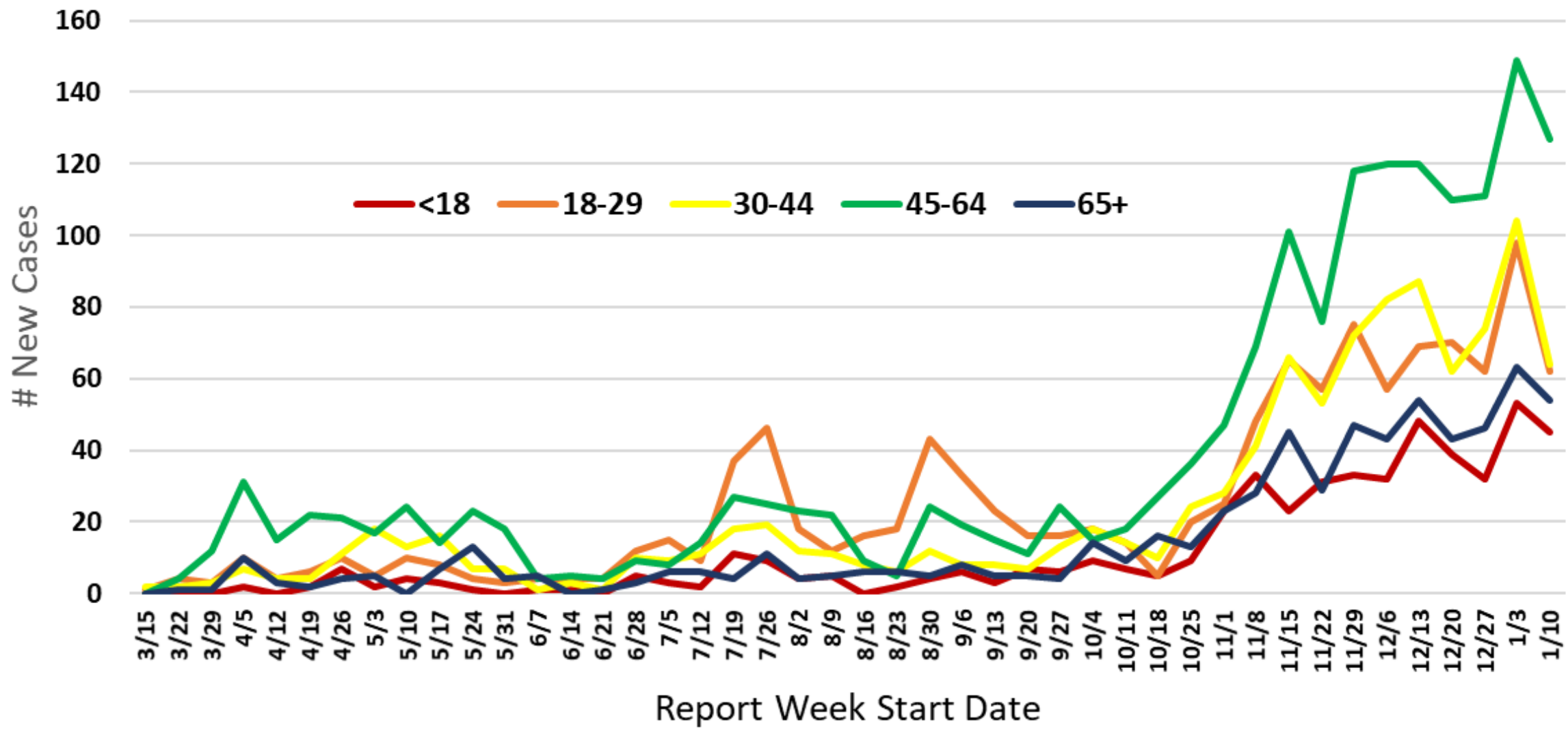
14-Day Rolling Average of New Community COVID-19 Cases by Report Date



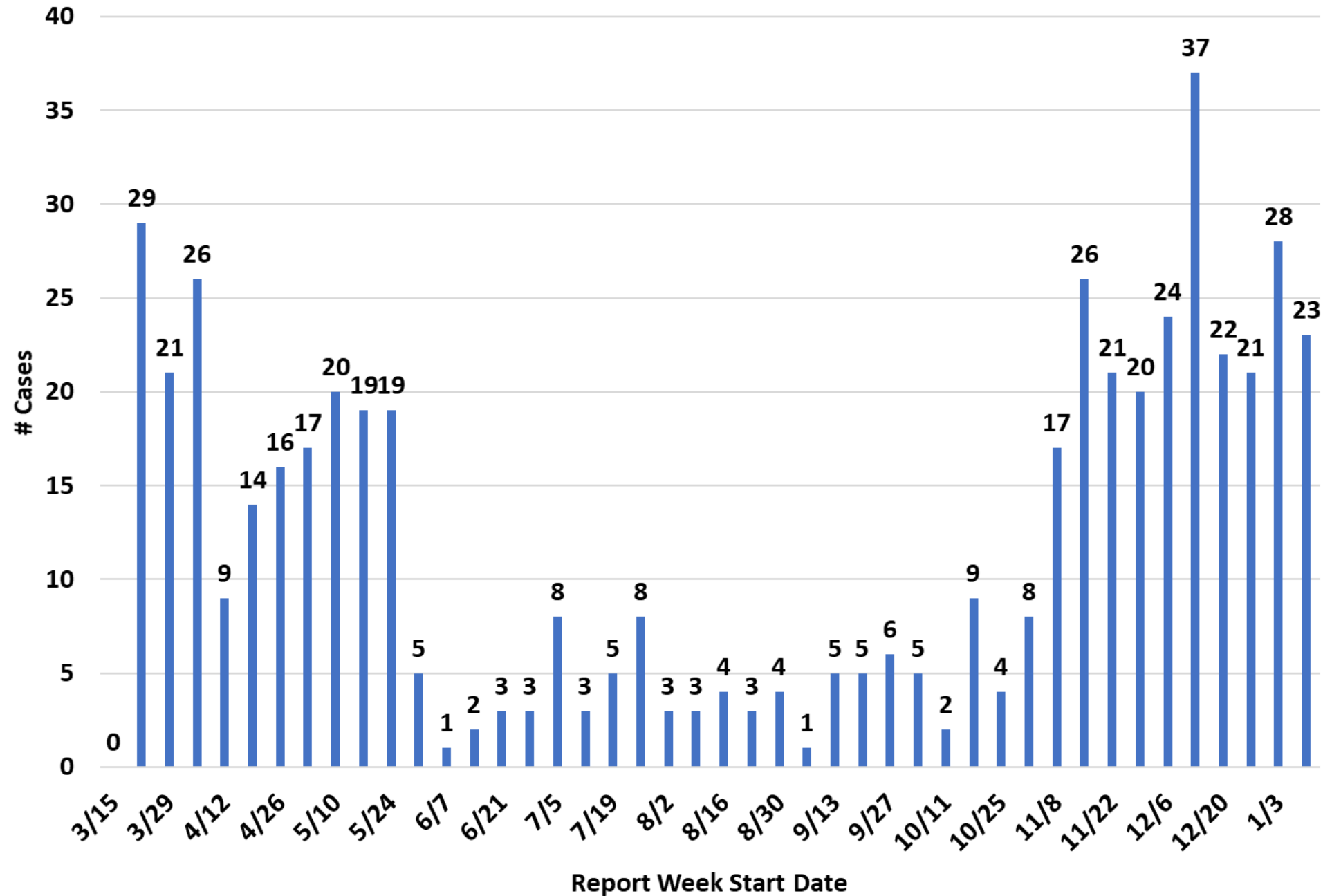
Please note: community cases only



COVID Cases: Age Groups by Report Week



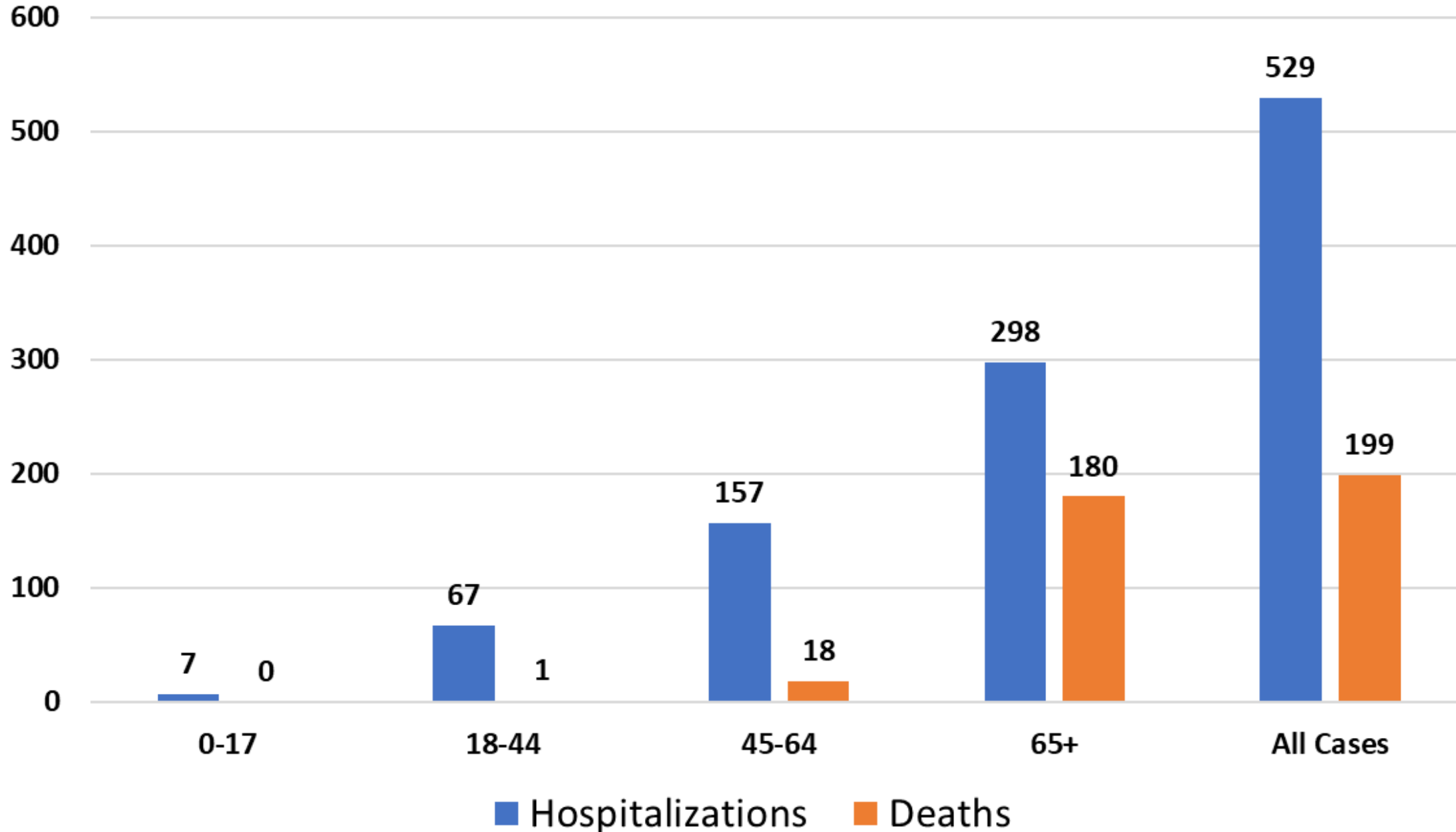
Hospitalizations by Report Week: All COVID-19 Cases



This graph shows hospitalizations by week for COVID positive Carroll County residents, in any hospital.

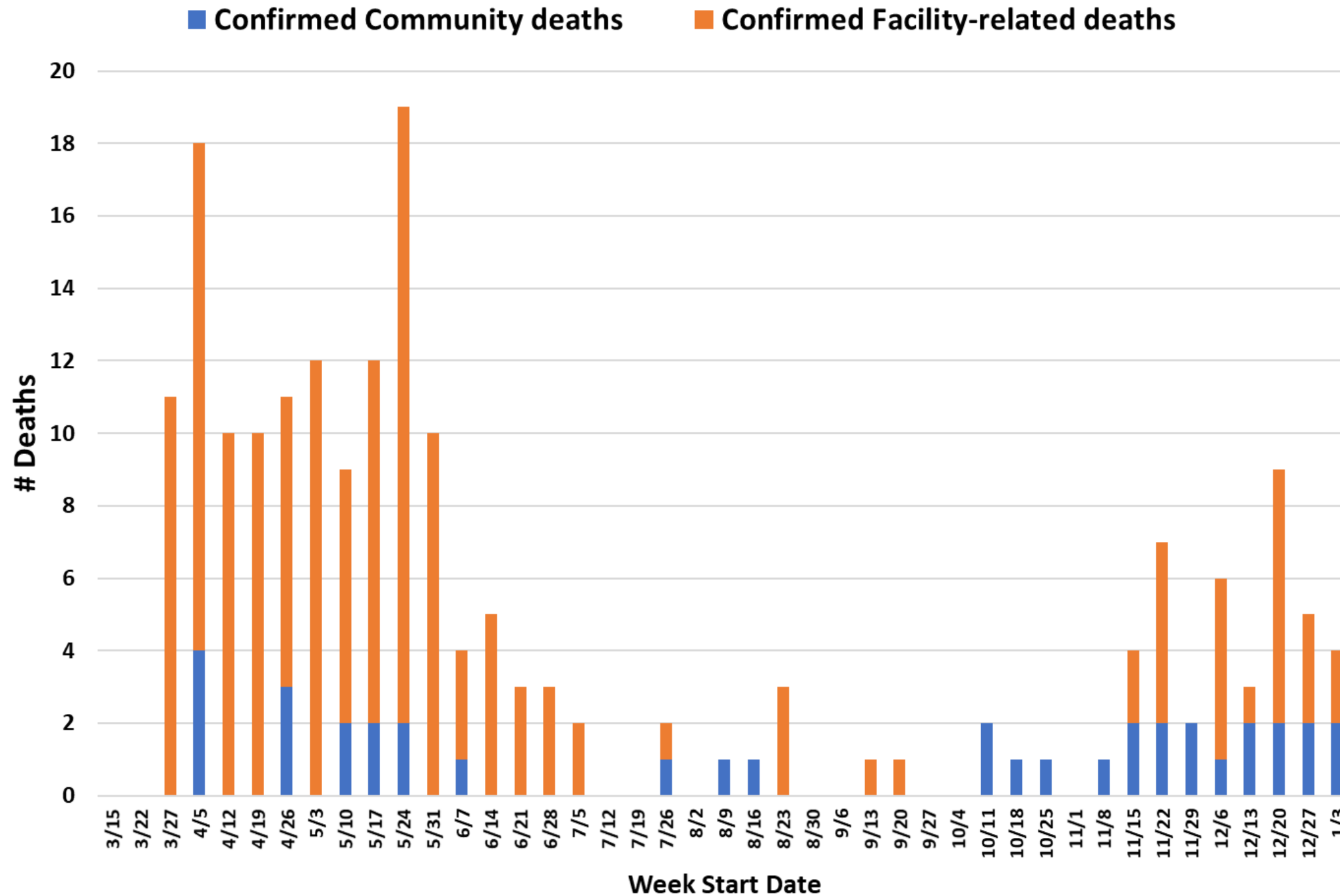
- Report week is the week their case was reported, which may not be the same week they were hospitalized. Only one hospitalization is noted per person.
- There is a slight data lag so recent numbers may increase.
- Additional hospital data can be found on our website: <https://cchd.maryland.gov/carroll-county-md-cases/>

Hospitalizations and Deaths by Age Group (years): All COVID-19 Cases

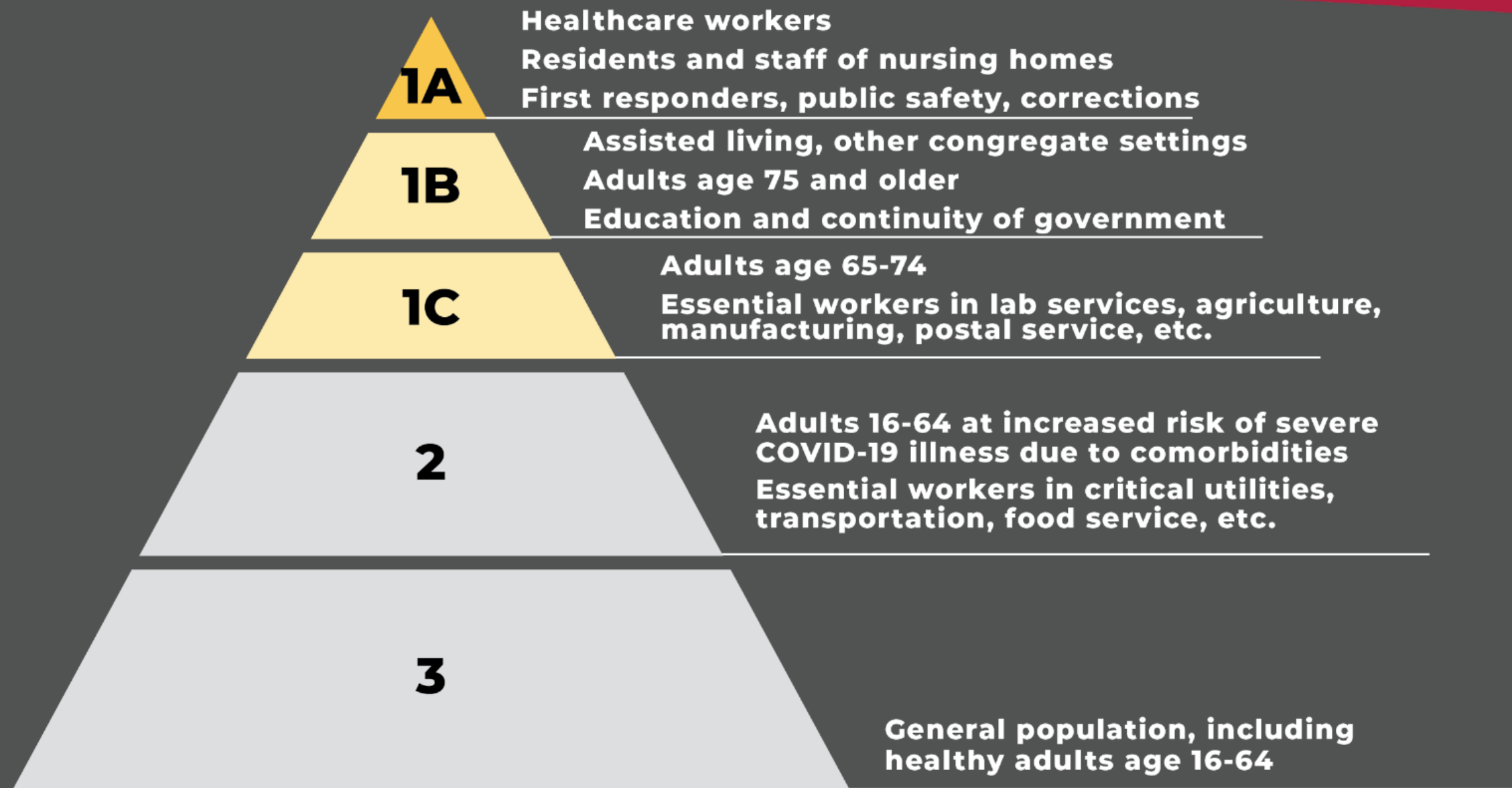


- Please note: Carroll Hospital reported last week that over 50% of their COVID-19 patients were aged 40-59.
- This chart reflects the number of Carroll residents who have been hospitalized at any time and in any hospital for COVID-19.

COVID-19 Deaths by Week of Death



- Please note:
- In the last 4 weeks, we have had 2 community deaths each week.
 - We have had 16 community deaths since November 8th.
 - This data does not include deaths in probable cases.



Vaccination totals:

Week of 12/27 – 103

Week of 1/3 – 1,163

Week of 1/10 – 1,510

Total vaccinated with first dose: 2,776

**This does not include Carroll Hospital staff (vaccinated by Carroll Hospital) or long-term care facilities (vaccinated by CVS/Walgreens).

Receiving only 1,400 doses for next week's clinics.

Week of January 17th: Starting Phase 1B

Phase 1A

We continue to vaccinate as doses allow.

Phase 1B includes

- Assisted living and group homes and other congregate facilities
 - Adults 75 and up
 - Education and childcare
 - People critical for continuity of government
- We vaccinated schools and childcare this week, along with more healthcare providers and first responders, and other small groups. We are registering people 75+ for vaccine clinics the week of 1/24.

Our vaccine supply is extremely limited and vaccine may soon be available at other sites. Visit our website for more information.

Current COVID-19 Vaccination Information and Updates

<https://cchd.maryland.gov/covid-19-vaccination/>



Questions?

**Carroll County
Health Department**



Public Health
Prevent. Promote. Protect.